

www.zbtjx.com



温州智博机械有限公司

地址：龙湾中心工业区
电话：0577-86926776
传真：0577-86926226
邮箱：zb@zbtjx.com
网址：www.zbtjx.com

Wenzhou Zhibo Machical
Tecghnology Co.,Ltd

Address : Zhongxin industrial Zone,Longwan
Tel : 0577-86926776
Fax : 0577-86926226
E-mail : zb@zbtjx.com
Website : www.zbtjx.com

ZBT 智能机械科技

ZHIBO MECHANICAL TECHNOLOGY

DIN/SMS/SIO/IDF/3A/RJT/DS/BS/BPE

ZBT 温州智博机械科技有限公司
WENZHOU ZHIBO MACHICAL TECHNOLOGY CO.,LTD.

Honored Quality, Exquisite Technology

in the long process of history, the logo of has experienced numerous years of evolution. its inherent connotation of courage, wisdom and glory, multiplied in an endless succession, has created permanent resplendence.

Has always been devoted to fluid equipment manufacturing. is full of rich solutions in the aspects of continuous improvement of full range of products and their application in various industries.

尊崇品质 精湛技术

苍茫岁月，智博经数年的演变，其内在的凝聚的勇气、智慧与荣耀的内涵，生生不息，造就永恒的灿然光华。

自成立以来，智博一直专注流体设备制造之路，对全线产品的长期连续改进与在各行业中的运用，智博有之丰富的解决方案。

Company Profile

企业概况

We enhance competitive force through innovative technology

我们用创新科技提高竞争力



温州智博机械科技有限公司设计生产和销售卫生级不锈钢流体设备，其产品广泛应用于乳制品、饮料、食品、制药、啤酒、化妆品及化工等工业领域，是国内最具实力的卫生级流体设备制造厂商。

所有的产品均可按照不同的光洁度，材质和工业标准，如：DIN、SMS、ISO、IDF、3A、RJT、DS、BS、BPE等进行制造，其系列齐全的流体产品现已得到中国和世界许多其它地区的认可，泵系列包括单级及多级离心泵，旋转凸轮泵，气动隔膜泵，特殊泵；阀门系列有：各种手动和气动蝶阀，手动及气动截止/换向阀，调节阀，稳压调节阀，防混阀及特殊阀；

我们还可提供各种型式规格的不锈钢薄壁管道，弯头，同心和偏心异径管，三通和活接头，管道过滤器和管道支撑件等安装材料，配有不同橡胶等级的密封件和垫圈；罐设备系列：各种规格的人孔盖板，搅拌器，清洗头，顶板，仿真空阀和安全阀，液位计和视镜；另外还有流量计，电器变送器及控制系统。

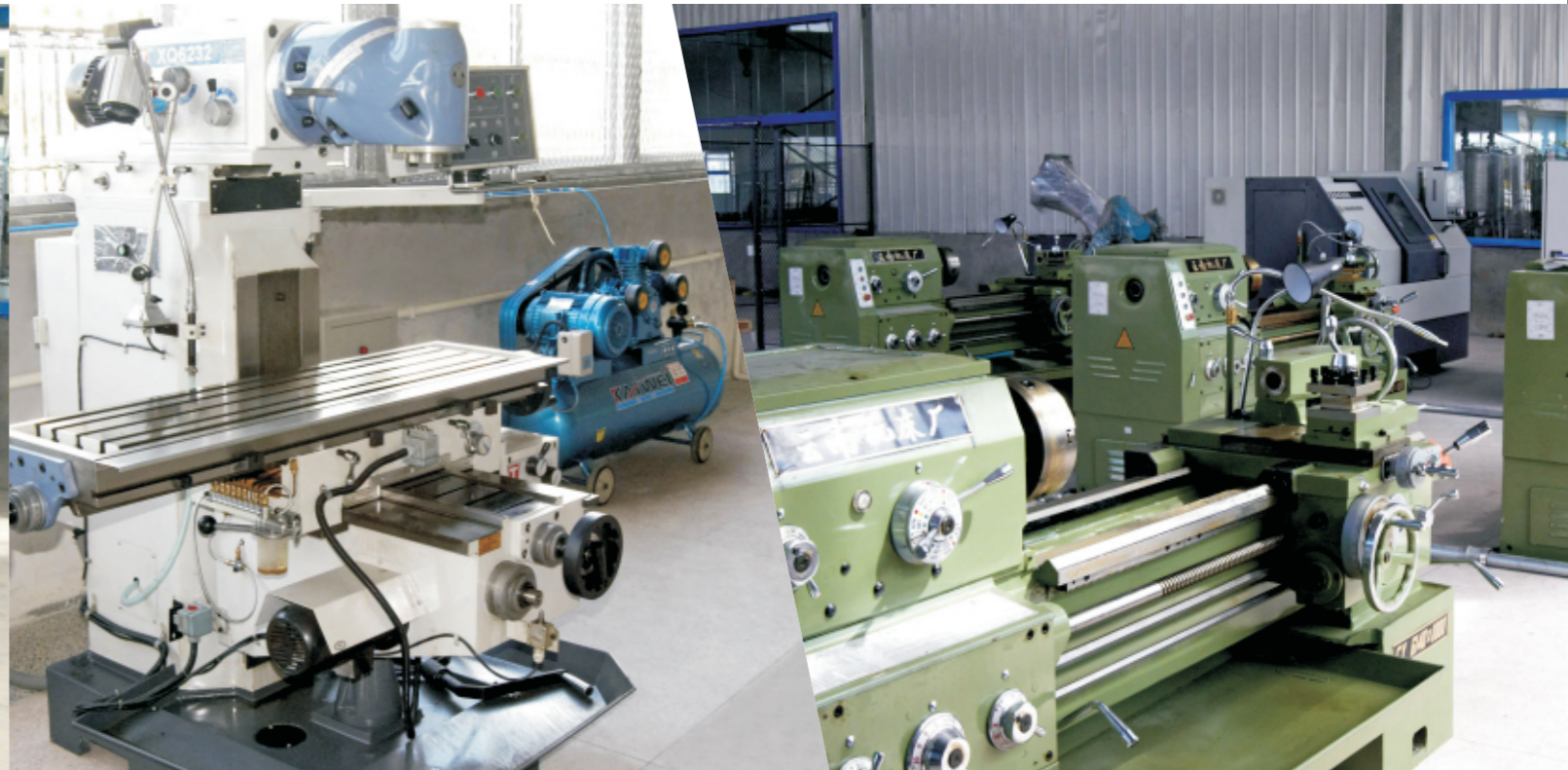
Wenzhou Zhibo Machical Tachnology Co.,Ltd As one of the strongest sanitary fluid equipment manufacturers in China, our company specializes in designing, producing and selling sanitary stainless steel fluid equipment, which are widely used in such industries as dairy, beverage, food, pharmacy, beer, cosmetics, chemical industry and etc.

All products can be manufactured according to various degress of finish,materials and industrial standards(such as DIN、SMS、ISO、IDF、3A、RJT、DS、BS、BPE).The complete series of fluid products have received wide recognition in China and manu other countries and regions in the word,The series of pump products of Comany include single-stage and multistage centrifugal pumps,rotary cam pumps,pneumatic diaphragm pumps and special pumps.The series of valve products include various manual and pneumatic butterfly valves,manual and pneumatic global valves,mixing-proof valves and special valves.

Furthermore,we also supply various models and specifications of staninless steel thin-wall pipes,elbows,concentric and eccentric reducing pipes,tees,unions,pipe filters,pipe supporters and other installation accessories,equaipped with seals and washers of various rubber grades.Likewise,we also provide tank equipment series such as various specifications of manhole cover plates,mixers,cleaning nozzles,ceiling boards,anti-vacuum valves,safety valves,loquid level meters and sight glasses,as well as flow meters,electrical transmitters and control systems.

Product workflow is realized 实现产品流程化

精湛的生产工艺严格的质保体系,智博为任一零件提供严密的保障
With elaborate production technology, a strict quality guarantee system,
Zhibo provides solid guarantee for each component.



Quality is represented by the incomparable reliability and performance of products.

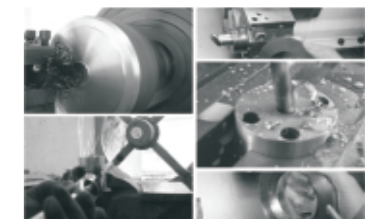
品质表现在产品无与伦比的可靠性和表现

一丝不苟,千锤百炼。
标准化的管理体系和系统化的品质
保证体系让智博品质在世界的每个
角落都畅通无阻。
智博人通过与合作者们卓有成效的努力,
正促使“智博”成为世界上无
可挑剔的品质。

在扎实的质量和严格质量管理的基础上,凝结睿智的技术和精髓,一直投身于新流体系统的技术开发和设计制作中.在时代环境下,力争哪怕是领先一步或半步的技术优势,同时以“创业精神”的发端“技术革新”为目标,开展能满足客户需求的流体系统开发活动。面对这个课题,我们将在已经积累的多样技术萌芽的基础上,努力开拓事业的未来。我们希望通过我们完善的设计、制造和售后服务确保每一台产品在有效使用期内充分发挥各项设计性能指标我们决心拥有先进的制造手段完备的检测设施的美誉度/的市场占有率对用户的各项诚信服务视为对用户应有的承诺采用高精精度工艺,利于全面推行计算机辅助制造,确保质量、工效。应用数字技术进行直接对话式编程,实施钻、削、铣、磨等工艺对关键部件进行机械加工,确保极限精度。

On the basis of stable quality and strict quality management, incorporating intelligent technology and essence, we are always engaged in the technology development, design and manufacturing of new fluid system. Under the background of the new era, we strive for keeping technology advantage one step or half step ahead. Furthermore, by setting the goal of technology innovation with enterprising spirit, we carry out various development activities for fluid system to meet customer requirements. Facing the theme, with the various technology rudiments accumulated, we are making efforts to develop the future of our business. We hope that through our perfect design, manufacturing and after-sales service, every set of product is guaranteed to fully exert the performance and indexes in each item during the effective use period. We are determined to possess advanced manufacturing method, perfect testing facilities and good reputation as well as high market occupying rate. Creditable services provided to and users are our promises to users. We adopt high accuracy technology, which is beneficial to full implementation of computer aided manufacturing so as to guarantee quality and work efficiency. We apply digital technology to carry out direct dialogue program, execute drilling, cutting, milling and grinding etc. technology on key parts to carry out mechanical machining so as to guarantee ultimate accuracy.

Beijing meticulous and highly finished. The standardized management system and systematic quality assurance system have enabled the products of zhibo to get the reliance of customers from all over the world for their high quality. Through effective efforts with cooperators, zhibo personnel are promoting the product quality of our company to be the most impeccable in the world.



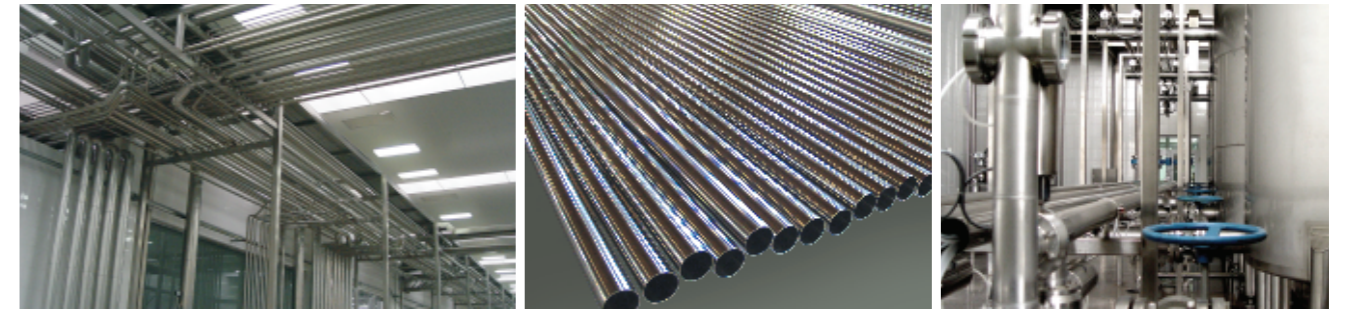


智博企业的技术，
 凭借其长年的研究和开发，
 构建了质量和信赖。

自创业以来，我们始终坚持以企业素质建设，既在流体系统的技术革新中，十分注重勇于挑战的创业精神，同时带来了无数的革新。其中得到了客户的支持与协作，借此机会，谨致以衷心的感谢。在我们这个行业，只有不断进行满足社会需求的革新开发，才是社会所赋予我们的使命。我们不仅在流体系统相关的机械行业中，创造了骄人业绩，同时正在食品、酿酒、饮料、乳品、日化、制药和生物工程相关的行业开发等广泛的领域中，不断拓展我们创业精神的活跃场所。



食品	Food
酿酒	Winery
饮料	Drinking
乳品	Dairy product
日化	Fine chemical industry
制药	Medicine
生物工程	Cosmetics



Zhibo Enterprise has achieved quality and reliance through years of technical research and development.

Since its establishment, we have always focused on the construction of enterprise quality. In the technology innovation of fluid system, we lay stress on the enterprising spirit of being bold to challenge and have brought forward many innovations. In some innovations, we lay stress supports and cooperation from customers, and we would like to take the opportunity to express our sincere thanks. In the industry, it is our mission endowed by the society to continuously carry out innovative development that satisfies social demands. We have created prominent achievements in the machinery industry relevant to fluid system, and are continuously expanding our business in the fields such as food, brewing, beverage, dairy products, household chemical, pharmacy and biological engineering etc. Industries.



Expansion of the global market

全球化市场的拓展

公司产品畅销国内外市场，主要出口新加坡、俄罗斯、尼日利亚、孟加拉、阿联酋等国际市场。我们每天24小时均提供服务。与用户联系的人员会在最短的时间内作出一切必要的协调和措施。



The products of our company are sold well in domestic and international markets, mainly exported to Singapore, Russia, Nigeria, Bengal, United Arab Emirates and etc. We provide 24 hours service every day and the perso who contacts customers will make every necessary coordination and measures within the shortest time.



网络
在国内设立多个办事处；可使您随时随地获得满意的需求和全方位的服务。

快速维修服务
服务中心可帮助您解决可能遇到的技术或质量问题，并可尽快为您提供专业性的维修/更换服务。

技术咨询
可为您提供技术或应用方面的咨询，请与贵地区的代表处联系。

产品认证
ZBT产品是ZBT高质量标准的体现时也符合DVGW、UL、CSA、VDE、GL、JIS、Fm等多种国际认证。

为客户定制的培训服务
可根据需要提供安装调试阶段的技术支持，并可为客户提供有关产品和系统方面的培训。

Network
Has established many offices throughout the country to meet your demands and provide you with all-round services anywhere and anytime.

Rapid Maintenance services
Service center can help you solve any possible technical or quality problem and provide you with professional maintenance/ replacement service promptly.

Technical Consultation
Will provide you with Consultation service in respect of technology and application. Please contact the representative of in your region.

Product Certification
ZBT Products are the embodiment of high quality standard of ZBT, and are in conformity with many international certifications such as DVGW, UL, CSA, VDE, GL, JIS, FM, AND and etc.

Customized Training and Service for Customers
Can provide you with technical supports for the periods of installation and commissioning according to the requirements, as well as trainings with respect to roduct and system.

316L微孔钛棒过滤器，其滤件由钛合金粉末烧结制成的，过滤精度为0.5-50μm，工作温度≤230℃、工作压力≤0.4MPa，产品具有耐腐蚀性强、滤层无脱落，不吸附主要成分等特点，主要用于药液脱碳过滤及气体过滤，可替代大输液生产线中常用的砂棒过滤器，各项技术指标符合药典规定和GMP要求。

316capillary titanium excellent-filter, it strains a one that is fritted by alloy powder of titanium and make,filter precision as 0.5-5um,working temperature ≤230℃,working pressure ≤0.4MPa,products have it has to be strong to able to bear corrosivity, strain layer come off,Do not suck and tell main medicine compositions wait for characteristic,used in liquid medicine take off charcoal filter and gas filter,but for take the pace of heavy to infuse production line comm-only used sand excellent filter mainly,every technology referring to marking accords with the official regulation and GMP request.



钛棒过滤器
Titanium rod filter



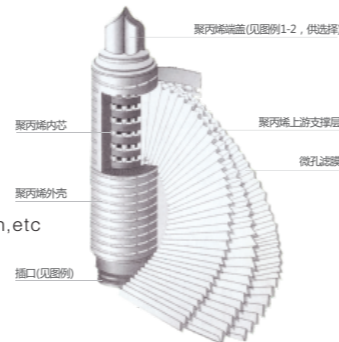
板框式过滤机
Frame Filter

微孔膜筒式过滤器
Microporous membrane barrel type filter

材料: 不锈钢SUS304或SUS316L
用途: 酒类, 饮料, 果汁, 醋类, 制药, 化工产品等
滤筒: 1、3、5、7、9、11、13、15
滤芯: 10英寸、20英寸、30英寸、40英寸
滤芯材质: 聚四氟乙烯、聚砜、尼龙、聚丙烯、醋酸纤维。
过滤孔径: 0.1μm、0.22μm、0.45μm、1μm、3μm、5μm、10μm,



Material: SUS3.4 or SUS316L
Application: Winery and brewery, pharmaceutical, chemistry, etc
Filter cartridge Qty: 1pcs、3pcs、5pcs、7pcs、9pcs、11pcs、13pcs、15pcs、
Size: 10"、20"、30"、40"
Cartridge material: EPDM, PP, nylon, etc
Accuracy: 0.1μm、0.22μm、0.45μm、1μm、3μm、5μm、10μm,



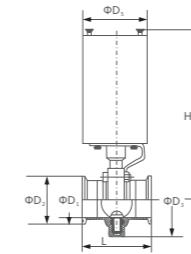
Pneumatic Actuator 气动执行器

气动双活瓣齿轮齿条传动结构,铝合金气缸体表面阳极氧化处理,齿轮轴表面化学镀镍处理,端盖压铸铝合金环氧树脂喷绘,螺丝螺母为不锈钢材质,滑动部位设改性F4代以减小摩擦,输出连接符合标准DIN/ISO5211、DIN3337,电磁阀板面连接尺寸符合NAMUR标准,可配手动操作机构,可配各种控制附件。

Aluminum alloy cylinder with anodic oxidation on the surface, Gear shaft with chemical nickel-plating treatment on the surface, End cover casting aluminum alloy with epoxy resin plating, Screws and nuts are made of stainless steel, Modified F4 belt is provided at the sliding part to reduce friction, Output connection as per standards DIN/ISO5211, DIN3337, connection dimensions of plate of solenoid valve as per NAMUR standard, Manual operation mechanism can be allocated, Various control accessories can be allocated.



DIN气动式快装蝶阀

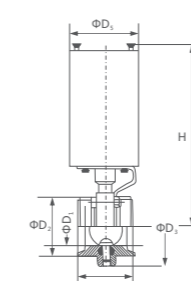


DIN drive fast-assembly butterfly valve

尺寸Size	ΦD1	ΦD2	ΦD3	ΦD5	H	L
DN25	25	50.5	80	85	220	75
DN32	31	50.5	82	85	220	75
DN40	37	50.5	88	85	220	76
DN50	49	64	110	85	230	78
DN65	66	91	127	85	235	80
DN80	81	106	147	85	240	86
DN100	100	119	169	133	380	100
DN125	125	155	195	133	380	130
DN150	150	183	225	133	390	154

(工业标准有: ISO、DIN、IDF、3A、SMS等)

DIN气动式双面螺纹性蝶阀



DIN drive double-side screwed butterfly valve

尺寸Size	ΦD1	ΦD2	ΦD3	ΦD5	H	L
DN25	25	Rd52x1/6"	78	85	220	70
DN32	31	Rd58x1/6"	82	85	220	68
DN40	37	Rd65x1/6"	88	85	220	70
DN50	49	Rd78x1/6"	110	85	230	80
DN65	66	Rd95x1/6"	127	85	235	80
DN80	81	Rd110x1/4"	147	85	240	86
DN100	100	Rd130x1/4"	169	133	380	88
DN125	125	Rd160x1/4"	195	133	380	110
DN150	150	Rd190x1/4"	225	133	390	110

(工业标准有: ISO、DIN、IDF、3A、SMS等)

Sanitary Pump

卫生泵

CIP self-priming pump, the body of pump is made of acidproof stainlesssteel (AISI 316), which has feature of acid-resistant and alkali-resistant, and conform with the sanitary requirements for foodstuff. with feature excels centrifugal pump, CIP self-priming pump can extract liquid with air or foam, and can automatically pimp even through there is only air inside the pump. This pump is a positive displacement pump, which can be widely used in situation when liquid level is lower than the pump, e.g. sucking milk from the bucket in the milk-sucking room, also can used as backward pump for cleaning tank in CIP auto cleaning system, mechanic sealing appy built-in centripetal type. The temperature of material pumped should not exceed 100°C.

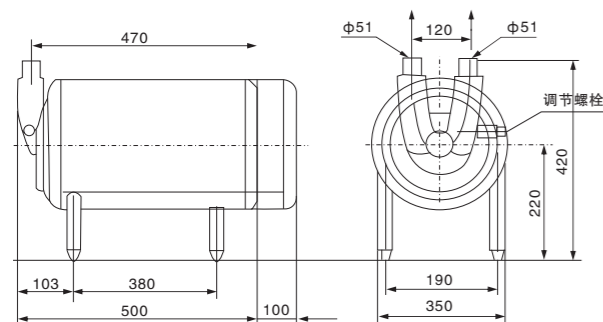


卫生级自吸泵
Stainless Centrifugal Pump



卫生级凸轮转子泵
Stainless Can rotor Pump

CIP自吸泵，其泵体部分材料，均为耐酸不锈钢制成（AISI316），耐酸碱腐蚀特性，尤为显著，符合食品卫生要求。优于离心泵的特性，在于能吸取混有空气或泡沫的液体，甚至能在只有空气时，照样自行抽吸，该泵是容积式泵。广泛用于液位低于泵的吸取物料，如在吸奶间，可将自奶桶中吸出，或可在自动CIP清洗系统中，作为清洗缸的回城泵，机械密封为内装内流式，吸取物料的温度不高于100°C。



性能 Performance	主要技术参数 Main technical parameters
流量Q Flow rate Q	10-20m/h
总扬程H Total lift H	18-20m
其中吸程Among : Suction lift	5-6m
叶轮轮幅直径Diameter of wheel spoke of impeller	Φ 189mm
进出口管径Pipe diameter of inlet and outlet	Φ 51mm
电动机型号 Motor model	Y112-4
功率Power	4KW(380V.50HZ)
转速Rotation speed	1420r/min
外形尺寸(长x宽x高) Outline dimension	600x350x420
机器重量Machine weight	55kg

说明：上曲线为流量、总扬程曲线(Q-H)。
下曲线为流量、吸上真空度曲线(Q-H)h取绝对值。
出口管路上、压力表读数，即总扬程与吸上真空度绝对值之差。
Note: The upper curve is the curve for flow rate and total lift(Q-H)
The lower curve is the curve for flow rate and degree of pumped vacuum (Q-H), h takes the absolute value.
The reading on the pressure meter at the outlet pipe is the difference of absolute value of total lift and degree of pumped vacuum.

Sanitary Centrifugal pump

卫生离心泵



技术参数 Technology parameter

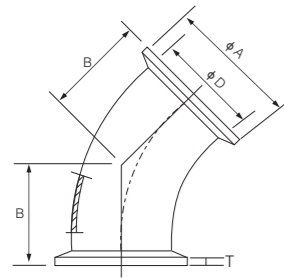
型号 Model	流量(吨/小时) Flow rate (ton/hour)	扬程(米水柱) Lift (mwc)	电机功率 Motor power	进出口口径 Inlet diameter and outlet diameter		备注 Remark
ZTW-1.5-14	1.5	14	0.5	40/25	32/25	
ZTW-3-14	3	14	11	40/32	38/38	
ZTW-5-24	5	24	1.5	50/40	51/38	
ZTW-5-32	5	32	2.2	50/40	51/38	
ZTW-10-24	10	25	2.2	50/40	51/38	
ZTW-10-36	10	36	3	50/40	51/38	
ZTW-15-24	15	24	3	50	51	
ZTW-20-24	20	24	4	50	51	
ZTW-20-36	20	36	5.5	50	51	
ZTW-25-24	25	24	4	50/50	51/51	
ZTW-30-24	30	24	5.5	65/50	63/51	
ZTW-30-36	30	36	7.5	65/50	63/51	
ZTW-30-60	30	60	11	65/50	63/51	
ZTW-35-36	35	36	11	65/50	76/63	
ZTW-40-36	40	36	11	80/65	76/63	
ZTW-40-45	40	45	11	80/65	101.6/76	
ZTW-50-36	50	36	11	80/65	101.676	
ZTW-80-30	80	30	15	100/80		
ZTW-80-40	80	40	18.5	100/80		
ZTW-100T-40	100	40	22	125/100		
ZTW-100T-70	100	70	33	125/100		
ZTW-150T-40	150	40	33	150/125		
ZTW-200T-40	200	40	45	150/125		
ZTW-200T-70	200	70	55	150/125		

注：调速采用无极变速机或变频器变速，其调速范围200-900rpm。
Note: The speed regulation can adopt stepless speed variator or frequency converter. The range of speed re is 200-900rpm.

ISO FITTINGS

ISO管件

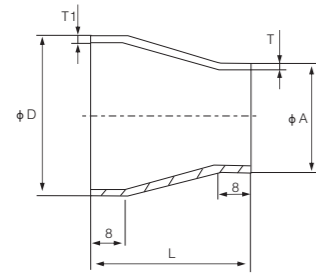
ISO 45° 快装(卡箍)弯头



ISO 45° Clamped Elbow(Hoop)

DN	D	B	A	T
1"	25.4	35.4	50.5	1.5
1.25"	31.8	37.2	50.5	1.5
1.5"	38.1	41.6	50.5	1.5
2"	50.8	46.1	64	1.5
2.5"	63.5	56.1	77.5	2
3"	76.2	58.2	91	2
3.5"	88.9	64.4	106	2
4"	101.6	74.1	119	2

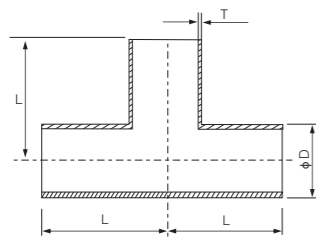
ISO 同心大小头



ISO Concentric Reducer

DN	D	T1	A	T	L
1.5"x1"	38.0	1.5	25.0	1.5	40
2"x1"	51.0	1.5	25.0	1.5	51
2"x1.5"	51.0	1.5	38.0	1.5	51
2.5"x1"	63.5	2	25.0	1.5	67
2.5"x1.5"	63.5	2	38.0	1.5	67
2.5"x2"	63.5	2	51.0	1.5	67
3"x1"	76.1	2	25	1.5	76
3"x1.5"	76.1	2	38	1.5	76
3"x2"	76.1	2	51	1.5	76
3"x2.5"	76.1	2	63.5	2	76
4"x2"	102	2	51.0	1.5	102
4"x2.5"	102	2	63.5	2	102
4"x3"	102	2	76.1	2	102

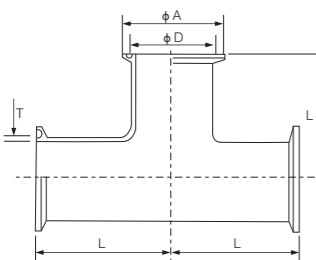
ISO 等径焊接三通



ISO Concentric Welded Tee

DN	D	L	T
1"	25.4	33.5	1.5
1.25"	31.8	41	1.5
1.5"	38.1	48.5	1.5
2"	50.8	60.5	1.5
2.5"	63.5	70	2
3"	76.2	80	2
3.5"	88.9	90	2
4"	101.6	100	2
5"	127	140	2
6"	152.4	178	2

ISO 等径快装三通



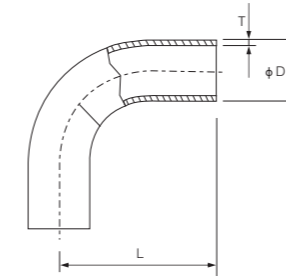
ISO Concentric Clamped Tee

DN	D	L	A	T
1"	25.4	55	50.5	1.5
1.25"	31.8	59.5	50.5	1.5
1.5"	38.1	70	50.5	1.5
2"	50.8	82	64	1.5
2.5"	63.5	91.5	77.5	2
3"	76.2	101.5	91	2
3.5"	88.9	111.5	106	2
4"	101.6	121.5	119	2

ISO FITTINGS

ISO管件

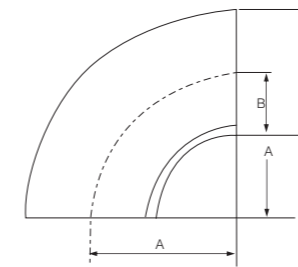
ISO 90° 加长焊接接头



ISO 90° Long Welded Liner

DN	D	A	T
1"	25.4	55	1.5
1.25"	31.8	60	1.5
1.5"	38.1	70	1.5
2"	50.8	82	1.5
2.5"	63.5	105	2
3"	76.2	110	2
3.5"	88.9	128	2
4"	101.6	160	2

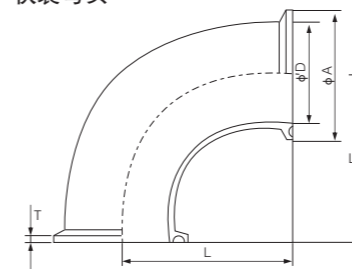
ISO 90° 短焊接接头



ISO 90° Short Liner

DN	A	D
1"	33.5	25.4
1 1/4"	38	31.8
1 1/2"	48.5	38.1
2"	60.5	50.8
2 1/2"	83.5	63.5
3"	88.5	76.2
3 1/2"	103.5	88.9
4"	127	101.6
5"	175	133
6"	214	159

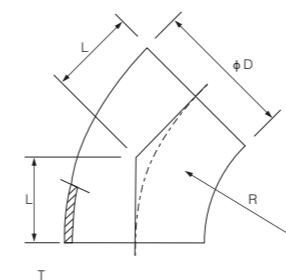
ISO 90° 快装弯头



ISO 90° Clamp Elbow

DN	D	L	A	T
1"	25.4	55	50.5	1.5
1.25"	31.8	62.5	50.5	1.5
1.5"	38.1	70	50.5	1.5
2"	50.8	82	64	1.5
2.5"	63.5	105	77.5	2
3"	76.2	110	91	2
3.5"	88.9	125	106	2
4"	101.6	148.5	119	2

ISO 45° 焊接弯头

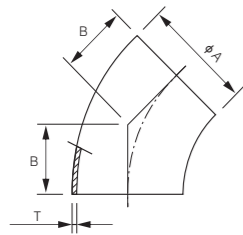


ISO 45° Welded Elbow

DN	D	L	R	T
1"	25.4	13.9	33.5	1.5
1.25"	31.8	15.7	41	1.5
1.5"	38.1	20.1	48.5	1.5
2"	50.8	25.1	60.5	1.5
2.5"	63.5	34.6	83.5	2
3"	76.2	36.7	88.5	2
3.5"	88.9	42.9	103.5	2
4"	101.6	52.6	127	2

3A FITTINGS(mm) ISO管件

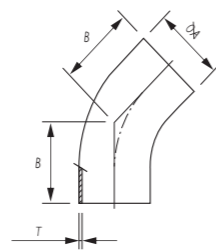
3A 45° 短弯头
3A 45° Short Elbow



2WK-45° 3A 弯头 Elbow

Size	A	B	T
1.0 "	25.4	15.8	1.65
1.5 "	38.1	23.8	1.65
2.0 "	50.8	31.75	1.65
2.5 "	63.5	39.6	1.65
3.0 "	76.2	47.6	1.65
4.0 "	101.6	63.5	2.10

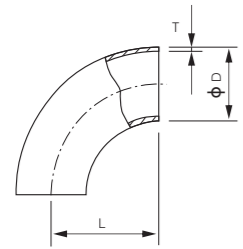
45° 长弯头
45° Long Elbow



2KS-45° 长弯头 Long Elbow

Size	A	B	T
1.0 "	25.4	30.2	1.65
1.5 "	38.1	41.3	1.65
2.0 "	50.8	58.7	1.65
2.5 "	63.5	76.2	1.65
3.0 "	76.2	93.7	1.65
4.0 "	101.6	122.2	2.10

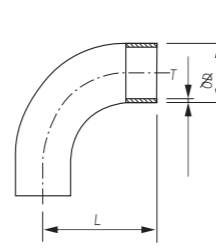
3A 90° 短弯头
3A 90° Short Elbow



2WCL-90° 弯头 Elbow

Size	D	L	T
1.0 "	25.4	38.10	1.65
1.5 "	38.1	57.20	1.65
2.0 "	50.8	76.20	1.65
2.5 "	63.5	95.25	1.65
3.0 "	76.2	114.30	1.65
4.0 "	101.6	152.40	2.10

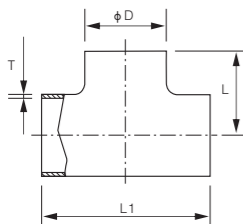
90° 长弯头
90° Long Elbow



2S-90° 弯头 Elbow

Size	D	L	T
1.0 "	25.4	52.4	1.65
1.5 "	38.1	74.6	1.65
2.0 "	50.8	103.2	1.65
2.5 "	63.5	131.8	1.65
3.0 "	76.2	160.3	1.65
4.0 "	101.6	211.1	2.10

3A 焊接三通
3A Welding Tee



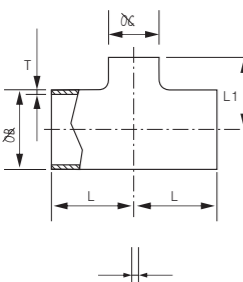
7WWW-等径三通 Equal Tee

Size	D	L	L1	T
1.0 "	25.4	28.6	57.2	1.65
1.5 "	38.1	42.1	84.2	1.65
2.0 "	50.8	52.4	104.8	1.65
2.5 "	63.5	59.5	119.0	1.65
3.0 "	76.2	65.9	131.8	1.65
4.0 "	101.6	87.3	174.6	2.10

7W-长三通 7W-Long Tee

Size	D	L	L1	T
1.0 "	25.4	47.6	95.2	1.65
1.5 "	38.1	57.2	114.4	1.65
2.0 "	50.8	76.2	152.4	1.65
2.5 "	63.5	76.2	152.4	1.65
3.0 "	76.2	82.6	165.2	1.65
4.0 "	101.6	98.4	196.8	2.10

3A 异径长三通
3A Reducing Long Tee



7RW-长三通 Long Tee

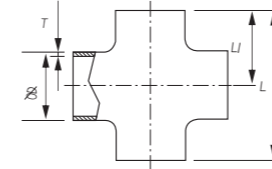
Size	B	C	L	L1	T
1.5 " x 1.0 "	38.1	25.4	57.15	53.98	1.65
2.0 " x 1.0 "	50.8	25.4	76.20	60.30	1.65
2.0 " x 1.5 "	50.8	38.1	76.20	63.50	1.65
2.5 " x 1.5 "	63.5	38.1	76.20	69.85	1.65
2.5 " x 2.0 "	63.5	50.8	76.20	82.55	1.65
3.0 " x 1.5 "	76.2	38.1	82.55	76.20	1.65

7RW-长三通 Long Tee

Size	B	C	L	L1	T
3.0 " x 2.0 "	76.2	50.8	82.55	88.90	1.65
3.0 " x 2.5 "	76.2	63.5	82.55	82.55	1.65
4.0 " x 2.0 "	101.6	50.8	98.40	101.60	2.10
4.0 " x 2.5 "	101.6	63.5	98.40	95.25	2.10
4.0 " x 3.0 "	101.6	76.2	98.40	95.25	2.10

3A FITTINGS(mm) 3A管件

3A 四通 3A Cross



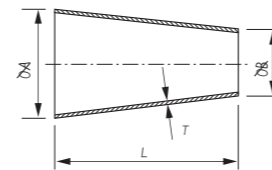
9WWWW-四通 Cross

Size	D	L	L1	T
1.0 "	25.4	57.2	28.6	1.65
1.5 "	38.1	84.2	42.1	1.65
2.0 "	50.8	104.8	52.4	1.65
2.5 "	63.5	119.0	59.5	1.65
3.0 "	76.2	131.8	65.9	1.65
4.0 "	101.6	174.6	87.3	2.10

9W-长四通 9W-Long Cross

Size	D	L	L1	T
1.0 "	25.4	95.2	47.6	1.65
1.5 "	38.1	114.4	57.2	1.65
2.0 "	50.8	152.4	76.2	1.65
2.5 "	63.5	152.4	76.2	1.65
3.0 "	76.2	165.2	82.6	1.65
4.0 "	101.6	196.8	98.4	2.10

3A 同心变径
3A Concentric Reducer



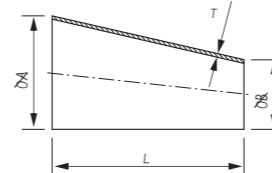
31同心变径

Size	A	B	L	T
1.5 " x 1.0 "	38.1	25.4	50.8	1.65
2.0 " x 1.5 "	50.8	38.1	50.8	1.65
2.5 " x 1.5 "	63.5	38.1	101.6	1.65
2.5 " x 2.0 "	63.5	50.8	50.8	1.65
3.0 " x 1.5 "	76.2	38.1	152.4	1.65
3.0 " x 2.0 "	76.2	50.8	101.6	1.65

31 Concentric Reducer

Size	A	B	L	T
3.0 " x 2.5 "	76.2	63.5	50.8	1.65
4.0 " x 1.5 "	101.6	38.1	254.0	2.10
4.0 " x 2.0 "	101.6	50.8	203.2	2.10
4.0 " x 2.5 "	101.6	63.5	152.4	2.10
4.0 " x 3.0 "	101.6	76.2	101.6	2.10

3A 偏心变径
3A Eccentric Reducer



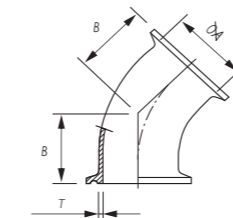
32偏心变径

Size	A	B	L	T
1.5 " x 1.0 "	38.1	25.4	50.8	1.65
2.0 " x 1.5 "	50.8	38.1	50.8	1.65
2.5 " x 1.5 "	63.5	38.1	101.6	1.65
2.5 " x 2.0 "	63.5	50.8	50.8	1.65
3.0 " x 1.5 "	76.2	38.1	152.4	1.65
3.0 " x 2.0 "	76.2	50.8	101.6	1.65

32 Eccentric Reducer

Size	A	B	L	T
3.0 " x 2.5 "	76.2	63.5	50.8	1.65
4.0 " x 1.5 "	101.6	38.1	254.0	2.10
4.0 " x 2.0 "	101.6	50.8	203.2	2.10
4.0 " x 2.5 "	101.6	63.5	152.4	2.10
4.0 " x 3.0 "	101.6	76.2	101.6	2.10

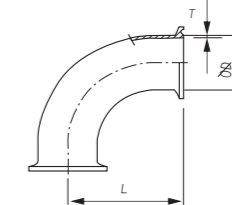
3A 45° 快装弯头
3A 45° Clamp Elbow



2KMP-45° 弯头 Elbow

Size	A	B	T
1.0 "	25.4	28.5	1.65
1.5 "	38.1	36.5	1.65
2.0 "	50.8	44.45	1.65
2.5 "	63.5	52.3	1.65
3.0 "	76.2	60.3	1.65
4.0 "	101.6	76.2	2.10

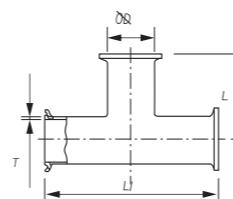
90° 快装弯头
90° Clamp Elbow



2KMP-90° 快装弯头 Clamp Elbow

Size	A	B	T
1.0 "	25.4	50.8	1.65
1.5 "	38.1	69.9	1.65
2.0 "	50.8	88.9	1.65
2.5 "	63.5	107.95	1.65
3.0 "	76.2	127.0	1.65
4.0 "	101.6	168.2	2.10

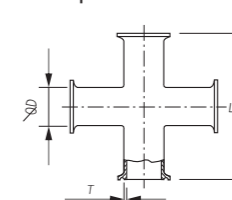
3A 快装三通
3A Clamp Tee



7MP-快装三通 Clamp Tee

Size	D	L	L1	T
1.0 "	25.4	60.3	120.6	1.65
1.5 "	38.1	69.9	139.8	1.65
2.0 "	50.8	88.9	177.8	1.65
2.5 "	63.5	88.9	177.8	1.65
3.0 "	76.2	95.3	190.6	1.65
4.0 "	101.6	114.2	228.4	2.10

快装四通
Clamp Cross

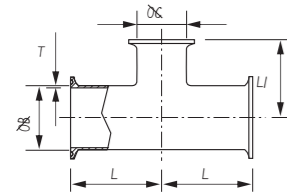


7MP-快装三通 Clamp

Size	D	L	L1	T
1.0 "	25.4	120.6	60.3	1.65
1.5 "	38.1	139.8	69.9	1.65
2.0 "	50.8	177.8	88.9	1.65
2.5 "	63.5	177.8	88.9	1.65
3.0 "	76.2	190.6	95.3	1.65
4.0 "	101.6	228.4	114.2	2.10

3A Fittings(mm) 3A管件

3A 快装变径三通
Clamp Reducing Tee



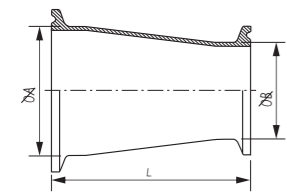
7MP-快装变径三通

Size	B	C	L	L1
1.5" × 1.0"	38.1	25.4	69.85	66.68
2.0" × 1.0"	50.8	25.4	88.90	73.00
2.0" × 1.5"	50.8	38.1	88.90	76.20
2.5" × 1.5"	63.5	38.1	88.90	82.55
2.5" × 2.0"	63.5	50.8	88.90	95.25
3.0" × 1.5"	76.2	38.1	98.25	88.90

7MP-Reducing Tee Clamp End

Size	B	C	L	L1
3.0" × 2.0"	76.2	50.8	95.25	101.60
3.0" × 2.5"	76.2	63.5	95.25	95.25
4.0" × 2.0"	101.6	50.8	114.20	114.30
4.0" × 2.5"	101.6	63.5	114.20	107.95
4.0" × 3.0"	101.6	76.2	114.20	107.95

3A 同心变径
Concentric Reducer



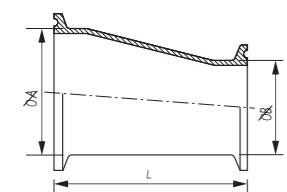
31-14MP快装同心变径

Size	A	B	L
1.5" × 1.0"	38.1	25.4	76.2
2.0" × 1.5"	50.8	38.1	76.2
2.5" × 1.5"	63.5	38.1	127.0
2.5" × 2.0"	63.5	50.8	76.2
3.0" × 1.5"	76.2	38.1	177.8
3.0" × 2.0"	76.2	50.8	127.0

31-14MP Concentric Reducer Clamp End

Size	A	B	L
3.0" × 2.5"	76.2	63.5	76.2
4.0" × 1.5"	101.6	38.1	282.5
4.0" × 2.0"	101.6	50.8	231.7
4.0" × 2.5"	101.6	63.5	180.9
4.0" × 3.0"	101.6	76.2	130.1

3A 偏心变径
Eccentric Reducer



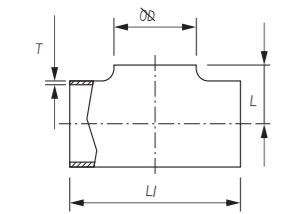
32-14MP快装偏心变径

Size	A	B	L
1.5" × 1.0"	38.1	25.4	76.2
2.0" × 1.5"	50.8	38.1	76.2
2.5" × 1.5"	63.5	38.1	127.0
2.5" × 2.0"	63.5	50.8	76.2
3.0" × 1.5"	76.2	38.1	177.8
3.0" × 2.0"	76.2	50.8	127.0

32-14MP Eccentric Reducer Clamp End

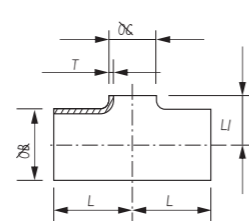
Size	A	B	L
3.0" × 2.5"	76.2	63.5	76.2
4.0" × 1.5"	101.6	38.1	282.5
4.0" × 2.0"	101.6	50.8	231.7
4.0" × 2.5"	101.6	63.5	180.9
4.0" × 3.0"	101.6	76.2	130.1

3A 短三通
3A Short Tee



等径短三通 W/O 直端

Size	D	L	L1	T
1.0"	25.4	16	57.2	1.65
1.5"	38.1	22	84.2	1.65
2.0"	50.8	29	104.8	1.65
2.5"	63.5	35	119.0	1.65
3.0"	76.2	41	131.8	1.65
4.0"	101.6	54	174.6	2.10

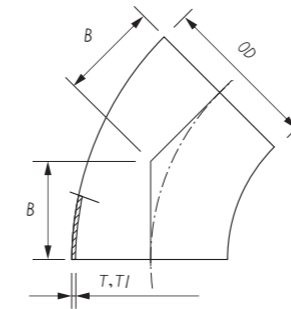


变径短三通 W/O 直端

Size	D	L	L1	T
1.5" × 1.0"	38.1	25.4	42.1	22
2.0" × 1.5"	50.8	38.1	52.4	29
2.5" × 2.0"	63.5	50.8	59.5	35
3.0" × 2.0"	76.2	50.8	65.9	41
3.0" × 2.5"	76.2	63.5	65.9	41
4.0" × 2.0"	101.6	50.8	117.5	54
4.0" × 2.5"	101.6	63.5	117.5	54
4.0" × 3.0"	101.6	76.2	117.5	54

SMS Fittings(mm) SMS管件

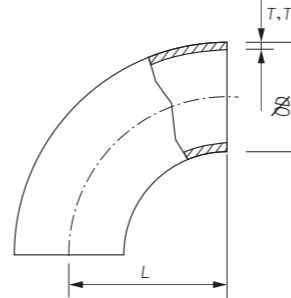
SMS 45° 短弯头



SMS 45° Short Elbow

Size	D	B	T	T1
25	25	15.53	1.25	1.5
38	38	23.61	1.25	1.5
51	51	31.69	1.25	1.5
63.5	63.5	39.45	1.50	1.5
76	76	47.28	1.60	2.0
104	104	63.0	2.00	2.0

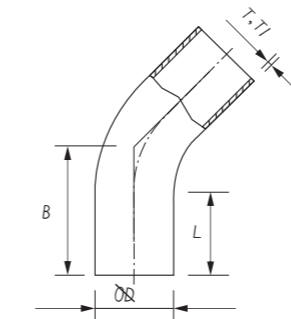
SMS 90° 短弯头



SMS 90° Short Elbow

Size	D	L	T	T1
25	25	37.5	1.25	1.5
38	38	57.0	1.25	1.5
51	51	76.5	1.25	1.5
63.5	63.5	95.25	1.50	1.5
76	76	114.15	1.60	2.0
104	104	152.1	2.00	2.0

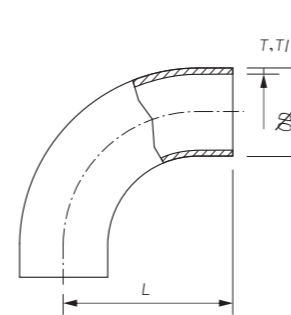
SMS 45° 长弯头



SMS 45° Long Elbow

Size	D	L	B	T	T1
25	25	27	42.53	1.25	1.5
38	38	33	56.61	1.25	1.5
51	51	37	68.69	1.25	1.5
63.5	63.5	38	78.45	1.50	1.5
76	76	38	85.28	1.60	2.0
104	104	40	103.0	2.00	2.0

SMS 90° 长弯头

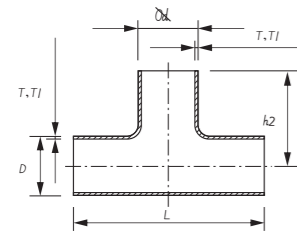


SMS 90° Long Elbow

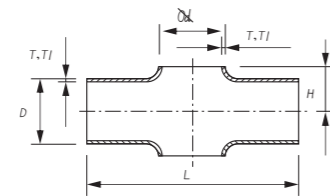
Size	D	L	T	T1
25	25	52.5	1.25	1.5
38	38	72.0	1.25	1.5
51	51	91.5	1.25	1.5
63.5	63.5	113.25	1.50	1.5
76	76	132.15	1.60	2.0
104	104	172.1	2.00	2.0

SMS Fittings(mm) SMS 管件

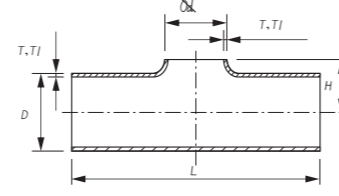
SMS 非直端三通
SMS Tee Without Straight-End



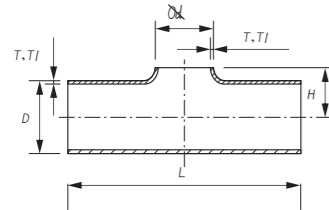
SMS 非直端焊接四通
SMS Welding Cross Without Straight-End



SMS 非直端变径三通
SMS Welding Reducing Tee Without Straight-End



SMS 非直端三通



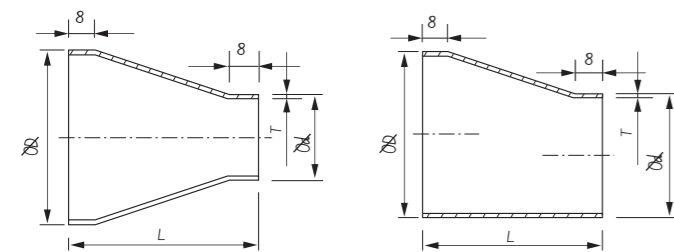
SMS Tee Without Straight-End

Size	φ D	T	L	H	φ d	T1
38×25	38	1.25	140	21	25	1.50
51×25	51	1.25	164	29	25	1.50
51×38	51	1.25	164	29	38	1.50
63.5×25	63.5	1.50	210	36	25	1.50
63.5×38	63.5	1.50	210	36	38	1.50
63.5×51	63.5	1.50	210	36	51	1.50
76.1×25	76.1	1.60	220	44	25	2.00
76.1×38	76.1	1.60	220	44	38	2.00
76.1×51	76.1	1.60	220	44	51	2.00
76.1×63.5	76.1	1.60	220	44	63.5	2.00
104×25	104	2.00	300	58	25	2.00
104×38	104	2.00	300	58	38	2.00
104×51	104	2.00	300	58	51	2.00
104×63.5	104	2.00	300	58	63.5	2.00
104×76.1	104	2.00	300	58	76.1	2.00

SMS Tee Without Straight-End

Size	φ D	T	T1	L	h2	H	φ d
25	25	1.25	1.5	110	55	15	25
38	38	1.25	1.5	140	70	21	38
51	51	1.25	1.5	164	81	29	51
63.5	63.5	1.5	1.5	210	105	36	63.5
76.1	76.1	1.6	2.0	220	110	44	76.1
104	104	2.0	2.0	300	150	58	104

SMS 卡式同心/偏心变径

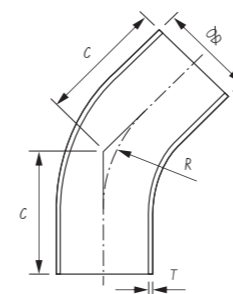


SMS Eccentric / Concentric Reducers

Size	φ D	T	φ d	t	L	L1
38×25	38	1.50	25	1.50	39	46
51×25	51	1.50	25	1.50	57	68
51×38	51	1.50	38	1.50	39	47
63.5×25	63.5	1.50	25	1.50	74	92
63.5×38	63.5	1.50	38	1.50	57	70
63.5×51	63.5	1.50	51	1.50	39	44
76×25	76.1	1.65	25	1.50	92	
76×38	76.1	1.65	38	1.50	74	92
76×51	76.1	1.65	51	1.50	57	68
76×63.5	76.1	1.65	63.5	1.65	39	47
104×51	104	2.00	51	1.50	95	117
104×63.5	104	2.00	63.5	1.50	78	94
104×76	104	2.00	76.1	1.50	60	74

DIN FITTINGS(mm) DIN 管件

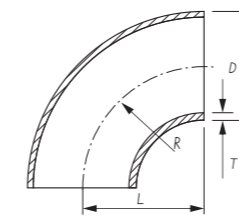
DIN 45° 短弯头



DIN 45° Short Elbow

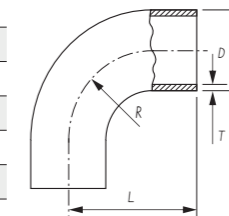
Size	D	C	R	T
DN25	28	20	20	1.5
DN32	34	23	23	1.5
DN40	40	20	20	1.5
DN50	52	27	27	1.5
DN65	70	30	30	2.0
DN80	85	33	33	2.0
DN100	104	40	40	2.0

DIN 90°短弯头 Short Elbow



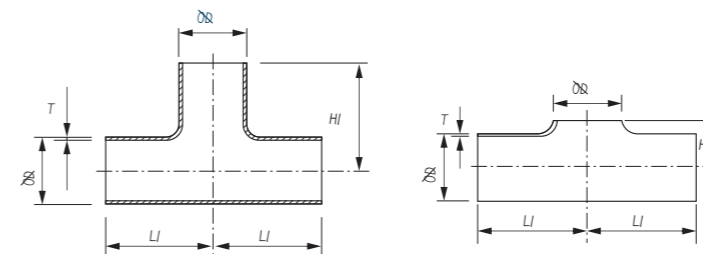
Size	D	L	R	T
DN25	28	50	50	1.5
DN32	34	55	55	1.5
DN40	40	60	60	1.5
DN50	52	70	70	1.5
DN65	70	80	80	2.0
DN80	85	90	90	2.0
DN100	101.6	133	133	2.0
DN100	104	100	100	2.0

DIN 90°长弯头 Long Elbow



Size	D	L	R	T
DN25	28	65	50	1.5
DN32	34	73	55	1.5
DN40	40	80	60	1.5
DN50	52	92	70	1.5
DN65	70	105	80	2.0
DN80	85	119	90	2.0
DN100	101.6	175	133	2.0
DN100	104	140	100	2.0

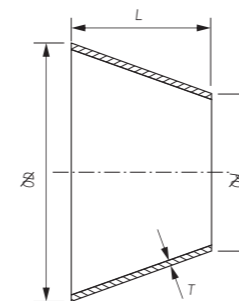
DIN 三通和拉式三通



DIN Tee & Pull Tee

Size	φ D	H	H1	L1	T
DN20	22	13	47	47	1.5
DN25	28	15.5	50	50	1.5
DN32	34	19	55	55	1.5
DN40	40	22	60	60	1.5
DN50	52	28.5	70	70	1.5
DN65	70	39.5	80	80	2.0
DN80	85	46.5	90	90	2.0
DN100	101.6	56	150	150	2.0
DN100	104	58	100	100	2.0

DIN 同心变径



DIN Concentric Reducer

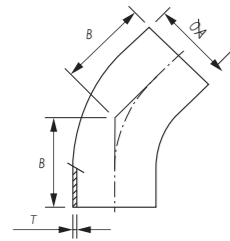
Size	φ D	φ d	T	L
32×25	34	28	1.5	25
40×25	40	28	1.5	23
40×32	40	34	1.5	23
50×25	52	28	1.5	27
50×32	52	34	1.5	28
50×40	52	40	1.5	27
65×25	70	28	1.5	35

DIN Concentric Reducer

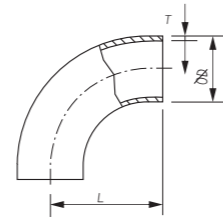
Size	φ D	φ d	T	L
65×40	70	40	1.5	39
65×50	70	52	1.5	29
80×50	85	52	2.0	45
80×65	85	70	2.0	33
100×50	104	52	2.0	50
100×65	104	70	2.0	44
100×80	104	85	2.0	60

BS FITTINGS(mm)
BS 管件

45° 长弯头 45° Long Elbow



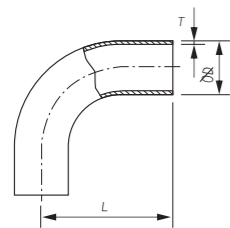
Size	A	B	T
1.0 "	25.4	30.2	1.65
1.5 "	38.1	41.3	1.65
2.0 "	50.8	58.7	1.65
2.5 "	63.5	76.2	1.65
3.0 "	76.2	93.7	1.65
4.0 "	101.6	122.2	2.10



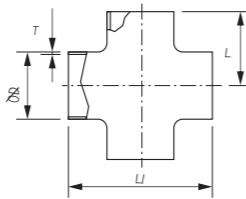
45° 短弯头 45° Short Elbow

Size	D	L	T
1.0 "	25.4	43.5	1.65
1.5 "	38.1	63.5	1.65
2.0 "	50.8	88.5	1.65
2.5 "	63.5	113.5	1.65
3.0 "	76.2	133.5	1.65
4.0 "	101.6	173.5	2.10

90° 长弯头 90° Long Elbow



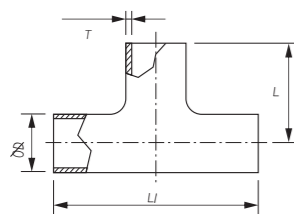
Size	D	L	T
1.0 "	25.4	65	1.65
1.5 "	38.1	85	1.65
2.0 "	50.8	110	1.65
2.5 "	63.5	135	1.65
3.0 "	76.2	155	1.65
4.0 "	101.6	195	2.10



四通 Cross

Size	D	L	L1	T
1.0 "	25.4	65	130	1.65
1.5 "	38.1	85	170	1.65
2.0 "	50.8	110	220	1.65
2.5 "	63.5	135	270	1.65
3.0 "	76.2	155	310	1.65
4.0 "	101.6	195	390	2.10

焊接三通



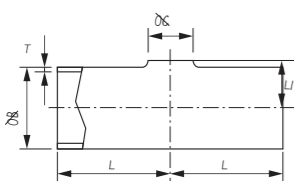
Welding Tee

Size	D	L	L1	T
1.0 "	25.4	43.5	87	1.65
1.5 "	38.1	63.5	127	1.65
2.0 "	50.8	88.5	177	1.65
2.5 "	63.5	113.5	227	1.65
3.0 "	76.2	133.5	267	1.65
4.0 "	101.6	173.5	347	2.10

Welding Tee

Size	D	L	L1	T
1.0 "	25.4	65	130	1.65
1.5 "	38.1	85	170	1.65
2.0 "	50.8	110	220	1.65
2.5 "	63.5	135	270	1.65
3.0 "	76.2	155	310	1.65
4.0 "	101.6	195	390	2.10

变径三通 W/O 直端



Reducing tee W/O Straight End

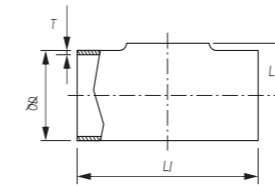
Size	B	C	L	L1	T
1.5 " x 1.0 "	38.1	25.4	63.5	22	1.65
2.0 " x 1.0 "	50.8	25.4	88.5	29	1.65
2.0 " x 1.5 "	50.8	38.1	88.5	29	1.65
2.5 " x 1.0 "	63.5	25.4	113.5	35	1.65
2.5 " x 1.5 "	63.5	38.1	113.5	35	1.65
2.5 " x 2.0 "	63.5	50.8	113.5	35	1.65
3.0 " x 1.0 "	76.2	25.4	132	41	1.65

Reducing tee W/O Straight End

Size	B	C	L	L1	T
3.0 " x 1.5 "	76.2	38.1	129	41	1.65
3.0 " x 2.0 "	76.2	50.8	122	41	1.65
3.0 " x 2.5 "	76.2	63.5	122	41	1.65
4.0 " x 2.0 "	101.6	50.8	173.5	55	2.10
4.0 " x 2.5 "	101.6	63.5	173.5	55	2.10
4.0 " x 3.0 "	101.6	76.2	173.5	55	2.10

BS FITTINGS(mm)
BS 管件

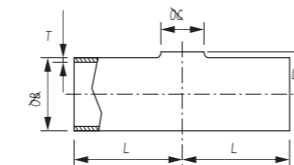
三通



Pulled Tee

Size	D	L	L1	T
1.0 "	25.4	14.2	87	1.65
1.5 "	38.1	21.6	127	1.65
2.0 "	50.8	29.1	177	1.65
2.5 "	63.5	35.3	227	1.65
3.0 "	76.2	41.4	267	1.65
4.0 "	101.6	54.7	347	2.10

长异径三通 W/O 直端



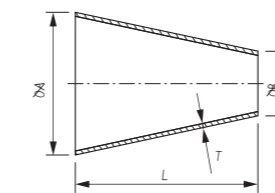
Long reducing tee W/O Straight end

Size	B	C	L	L1	T
1.5 " x 1.0 "	38.1	25.4	63.5	22	1.65
2.0 " x 1.0 "	50.8	25.4	88.5	29	1.65
2.0 " x 1.5 "	50.8	38.1	88.5	29	1.65
2.5 " x 1.0 "	63.5	25.4	113.5	35	1.65
2.5 " x 1.5 "	63.5	38.1	113.5	35	1.65
2.5 " x 2.0 "	63.5	50.8	113.5	35	1.65
3.0 " x 1.0 "	76.2	25.4	113.5	41	1.65

Long reducing tee W/O Straight end

Size	B	C	L	L1	T
3.0 " x 1.5 "	76.2	38.1	113.5	41	1.65
3.0 " x 2.0 "	76.2	50.8	113.5	41	1.65
3.0 " x 2.5 "	76.2	63.5	113.5	41	1.65
4.0 " x 2.0 "	101.6	50.8	173.5	55	2.10
4.0 " x 2.5 "	101.6	63.5	173.5	55	2.10
4.0 " x 3.0 "	101.6	76.2	173.5	55	2.10

同心变径



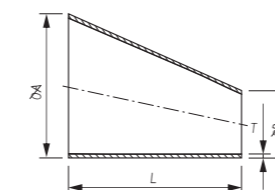
Concentric Reducer

Size	A	B	L	T
1.5 " x 1.0 "	38.1	25.4	29	1.65
2.0 " x 1.0 "	50.8	25.4	53	1.65
2.0 " x 1.5 "	50.8	38.1	41	1.65
2.5 " x 1.0 "	63.5	25.4	82	1.65
2.5 " x 1.5 "	63.5	38.1	64	1.65
2.5 " x 2.0 "	63.5	50.8	40	1.65
3.0 " x 1.0 "	76.2	25.4	110	1.65

Concentric Reducer

Size	A	B	L	T
3.0 " x 1.5 "	76.2	38.1	81	1.65
3.0 " x 2.0 "	76.2	50.8	55	1.65
3.0 " x 2.5 "	76.2	63.5	41	1.65
4.0 " x 1.5 "	101.6	38.1	135	2.10
4.0 " x 2.0 "	101.6	50.8	106	2.10
4.0 " x 2.5 "	101.6	63.5	76	2.10
4.0 " x 3.0 "	101.6	76.2	53	2.10

偏心变径



Eccentric Reducer

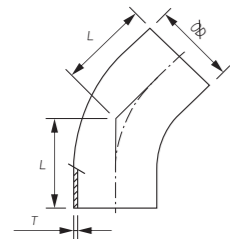
Size	A	B	L	T
1.5 " x 1.0 "	38.1	25.4	35	1.65
2.0 " x 1.0 "	50.8	25.4	54	1.65
2.0 " x 1.5 "	50.8	38.1	36	1.65
2.5 " x 1.0 "	63.5	25.4	76	1.65
2.5 " x 1.5 "	63.5	38.1	66	1.65
2.5 " x 2.0 "	63.5	50.8	35	1.65
3.0 " x 1.0 "	76.2	25.4	112	1.65

Eccentric Reducer

Size	A	B	L	T
3.0 " x 1.5 "	76.2	38.1	78	1.65
3.0 " x 2.0 "	76.2	50.8	66	1.65
3.0 " x 2.5 "	76.2	63.5	44	1.65
4.0 " x 1.5 "	101.6	38.1	122	2.10
4.0 " x 2.0 "	101.6	50.8	97	2.10
4.0 " x 2.5 "	101.6	63.5	73	2.10
4.0 " x 3.0 "	101.6	76.2	77	2.10

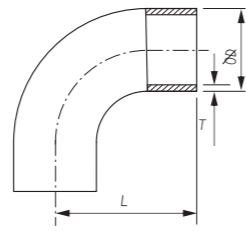
AS FITTINGS(mm)

AS 管件



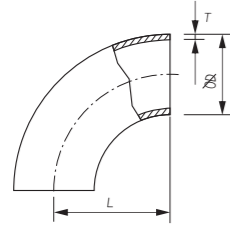
AS 45° 长弯头 Long Elbow

Size	D	L	T
1/2"	12.7	30	1.6
3/4"	19.1	30	1.6
1.0"	25.4	30	1.6
1 1/4"	32	30	1.6
1.5"	38.1	30	1.6
2.0"	50.8	30	1.6
2.5"	63.5	30	1.6
3.0"	76.2	30	1.6
4.0"	101.6	30	2.0



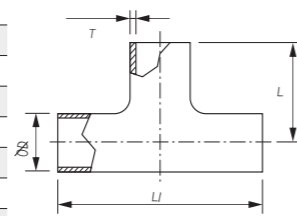
AS 90° 长弯头 Long Elbow

Size	D	L	T
1/2"	12.7	49.1	1.6
3/4"	19.1	58.6	1.6
1.0"	25.4	68.1	1.6
1 1/4"	31.8	77.7	1.6
1.5"	38.1	87.0	1.6
2.0"	50.8	106.2	1.6
2.5"	63.5	125.0	1.6
3.0"	76.2	144.2	1.6
4.0"	101.6	182.4	2.0



AS 90° 短弯头 Short Elbow

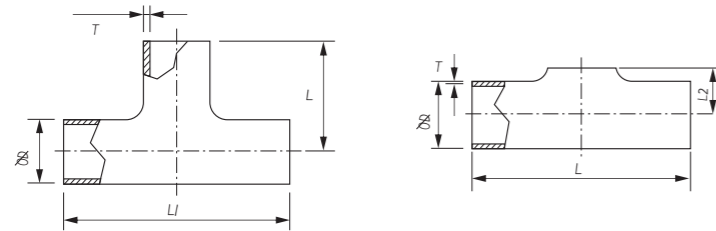
Size	D	L	T
1/2"	12.7	19.1	1.6
3/4"	19.1	28.6	1.6
1.0"	25.4	38.1	1.6
1 1/4"	31.8	47.7	1.6
1.5"	38.1	57.0	1.6
2.0"	50.8	76.2	1.6
2.5"	63.5	95.0	1.6
3.0"	76.2	114.2	1.6
4.0"	101.6	152.4	2.0



AS 长三通 AS Long Tee

Size	D	L	L1	T
1/2"	12.7	98.2	49.1	1.6
3/4"	19.1	117.2	58.6	1.6
1.0"	25.4	136.2	68.1	1.6
1 1/4"	31.8	155.4	77.7	1.6
1.5"	38.1	174	87.0	1.6
2.0"	50.8	212.4	106.2	1.6
2.5"	63.5	250	125.0	1.6
3.0"	76.2	288.4	144.2	1.6
4.0"	101.6	364.8	182.4	2.0

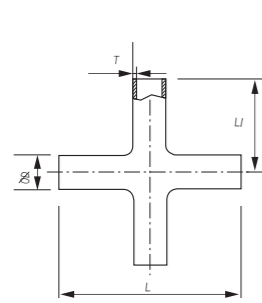
AS短三通/等径三通



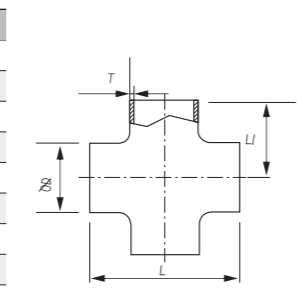
AS Short Tee / Equal Tee

Size	D	L	L1	T	T
1/2"	12.7	38.2	19.1	9.35	1.6
3/4"	19.1	57.2	28.6	12.55	1.6
1.0"	25.4	76.2	38.1	15.7	1.6
1 1/4"	31.8	95.4	47.7	18.9	1.6
1.5"	38.1	114	57.0	22.05	1.6
2.0"	50.8	152.4	76.2	28.4	1.6
2.5"	63.5	190	95.0	34.75	1.6
3.0"	76.2	228.4	114.2	41.1	1.6
4.0"	101.6	304.8	152.4	53.8	2.0

AS 长四通 AS Long Cross



Size	D	L	L1	T
1/2"	12.7	98.2	49.1	1.6
3/4"	19.1	117.2	58.6	1.6
1.0"	25.4	136.2	68.1	1.6
1 1/4"	31.8	155.4	77.7	1.6
1.5"	38.1	174	87.0	1.6
2.0"	50.8	212.4	106.2	1.6
2.5"	63.5	250	125.0	1.6
3.0"	76.2	288.4	144.2	1.6
4.0"	101.6	364.8	182.4	2.0



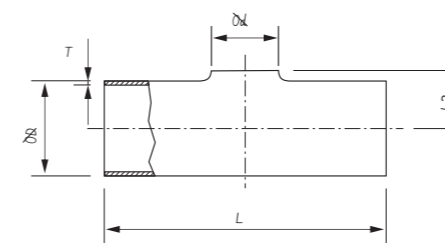
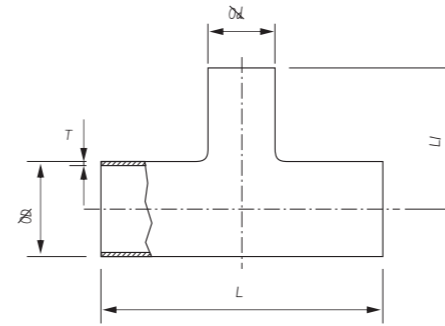
AS 短四通 AS Short Cross

Size	D	L	L1	T
1/2"	12.7	38.2	19.1	1.6
3/4"	19.1	57.2	28.6	1.6
1.0"	25.4	76.2	38.1	1.6
1 1/4"	31.8	95.4	47.7	1.6
1.5"	38.1	114	57.0	1.6
2.0"	50.8	152.4	76.2	1.6
2.5"	63.5	190	95.0	1.6
3.0"	76.2	228.4	114.2	1.6
4.0"	101.6	304.8	152.4	2.0

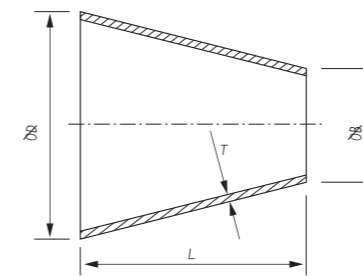
AS FITTINGS(mm)

AS 管件

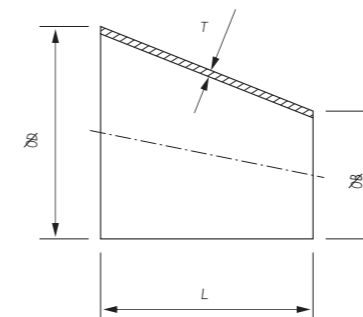
AS 异径三通及等径异径三通



AS 同心异径管节



AS 偏心异径管节



AS Redicong Tee & Equal Reducing Tee

Size	D	d	L	L1	L2	T
1.5" x 1.0"	38.1	25.4	160	80	22.05	1.6
2.0" x 1.0"	50.8	25.4	160	80	28.4	1.6
2.0" x 1.5"	50.8	38.1	160	80	28.4	1.6
2.5" x 1.5"	63.5	38.1	160	80	34.75	1.6
2.5" x 2.0"	63.5	50.8	160	80	34.75	1.6
3.0" x 1.5"	76.2	38.1	160	80	41.1	1.6
3.0" x 2.0"	76.2	50.8	160	80	41.1	1.6
3.0" x 2.5"	76.2	63.5	160	80	41.1	1.6
4.0" x 2.0"	101.6	50.8	160	80	53.8	2.0
4.0" x 2.5"	101.6	63.5	160	80	53.8	2.0
4.0" x 3.0"	101.6	76.2	160	80	53.8	2.0

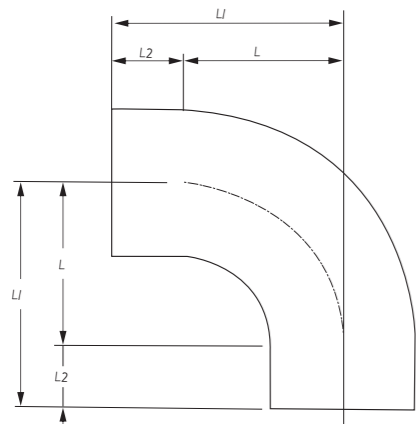
AS Concentric & Eccentric Reducer

Size	D	d	L	T
3/4" x 1/2"	19.1	12.7	19.1	1.6
1.0" x 1/2"	25.4	12.7	25.4	1.6
1.0" x 3/4"	25.4	19.1	25.4	1.6
1 1/4" x 3/4"	31.8	19.1	31.8	1.6
1 1/4" x 1.0"	31.8	25.4	31.8	1.6
1.5" x 3/4"	38.1	19.1	38.1	1.6
1.5" x 1.0"	38.1	25.4	38.1	1.6
2.0" x 1/2"	50.8	12.7	50.8	1.6
2.0" x 24"	50.8	19.1	50.8	1.6
2.0" x 1.0"	50.8	25.4	50.8	1.6
2.0" x 1 1/4"	50.8	31.8	50.8	1.6
2.0" x 1.5"	50.8	38.1	50.8	1.6
2.5" x 1.0"	63.5	25.4	63.5	1.6
2.5" x 1 1/4"	63.5	31.8	63.5	1.6
2.5" x 1.5"	63.5	38.1	63.5	1.6
2.5" x 2.0"	63.5	50.8	63.5	1.6
3.0" x 1.0"	76.2	25.4	76.2	1.6
3.0" x 1 1/4"	76.2	31.8	76.2	1.6
3.0" x 1.5"	76.2	38.1	76.2	1.6
3.0" x 2.0"	76.2	50.8	76.2	1.6
3.0" x 2.5"	76.2	63.5	76.2	1.6
4.0" x 1.0"	101.6	25.4	101.6	2.0
4.0" x 1 1/4"	101.6	31.8	101.6	2.0
4.0" x 1.5"	101.6	38.1	101.6	2.0
4.0" x 2.0"	101.6	50.8	101.6	2.0
4.0" x 2.5"	101.6	63.5	101.6	2.0
4.0" x 3.0"	101.6	76.2	101.6	2.0

AS 1528 ELBOW(mm)

AS 管件

AS 1528 弯头

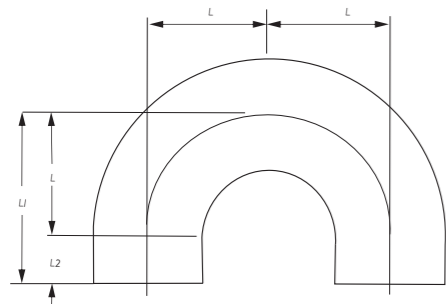


NOTES

- 1 L2 refers to the straight-end extensions
 - 2 Bends conforming to this Standard with dimensions L and L1 should be used. Normally, Standard bends are supplied with straights
- FIGURE 1 BENDS SHOWING PROVISIONS FOR STRAIGHT- END EXTENSIONS

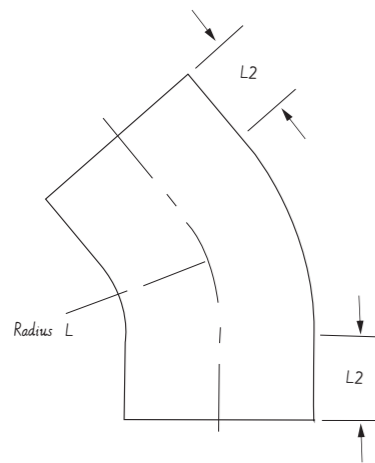
DIMENSIONS

- 1 Tubing
The outside diameter and wall thickness if the tubing used shall be as specified in Table II of AS 1528.1.
- 2 Fitting dimensions
The dimensions for fittings with and without straight-end extensions shall be as given in Tables 1, 2, 3, 4, and Figures 1, 2, 3, 4 and 5 herein.



DIMENSIONS OF 45° ,90° AND 180° TUBE BENDS

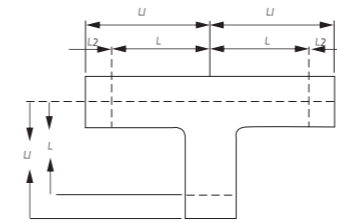
Nominal size	Dimensions (refer to Figure 1)			Wall thickness nominal
	L	L1	L2	
12.7	19.1	49.1	30.0	1.6
19.1	28.6	58.6	30.0	1.6
25.4	38.1	68.1	30.0	1.6 or 2
31.8	47.7	77.7	30.0	1.6 or 2
38.1	57.0	87.0	30.0	1.6 or 2
50.8	76.2	106.2	30.0	1.6 or 2
63.5	95.0	125.0	30.0	1.6 or 2
76.2	114.2	144.2	30.0	1.6 or 2
101.6	152.4	182.4	30.0	1.6 or 2
127.0	190.5	230.5	40.0	1.6 or 2
152.4	228.5	268.5	40.0	1.6 or 2



AS 1528 ELBOW(mm)

AS 管件

AS 1528 三通

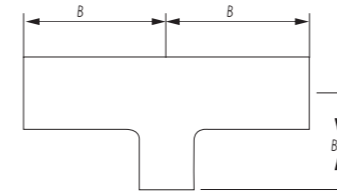


AS Reducing Tee

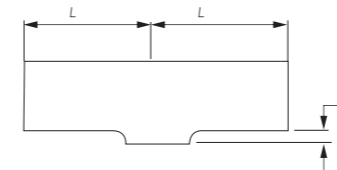
NOTE B=1/2 branch diameter or 80 mm minimum

FIGURE 2 TEES AND CROSSES SHOWING PROVISION FOR STRAIGHT- END EXTENSIONS

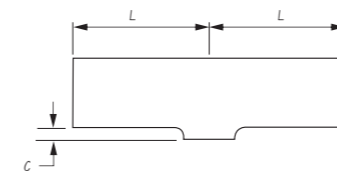
AS 同心异径管节 Reducing tee/cross



AS 同心异径管节 Pulled tee/cross



AS 同心异径管节 Reducing pulled tee/cross



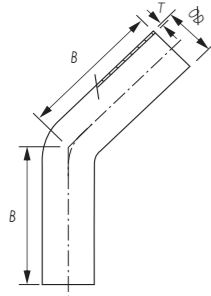
DIMENSIONS OF EQUAL, REDUCING AND PULLED TEES

Nominal size	Dimensions (refer to Figure 2)			
	L	L1	L2	C
12.7	19.1	49.1	30.0	3.0
19.1	28.6	58.6	30.0	3.0
25.4	38.1	68.1	30.0	3.0
31.8	47.7	77.7	30.0	3.0
38.1	57.0	87.0	30.0	3.0
50.8	76.2	106.2	30.0	3.0
63.5	95.0	125.0	30.0	3.0
76.2	114.2	144.2	30.0	3.0
101.6	152.4	182.4	30.0	3.0
127.0	190.5	230.5	40.0	3.0
152.4	228.5	268.5	40.0	3.0

BPE FITTINGS(mm)

BPE 管件

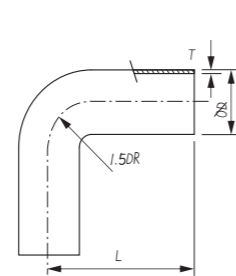
BPE-2KS 45° 弯头



BPE-2KS 45° Elbow DT-8

Size	A	B	T
1/2 "	12.7	57.2	1.65
3/4 "	19.05	57.2	1.65
1.0 "	25.4	57.2	1.65
1.5 "	38.1	63.5	1.65
2.0 "	50.8	76.2	1.65
2.5 "	63.5	85.7	1.65
3.0 "	76.2	92.1	1.65
4.0 "	101.6	114.3	2.10

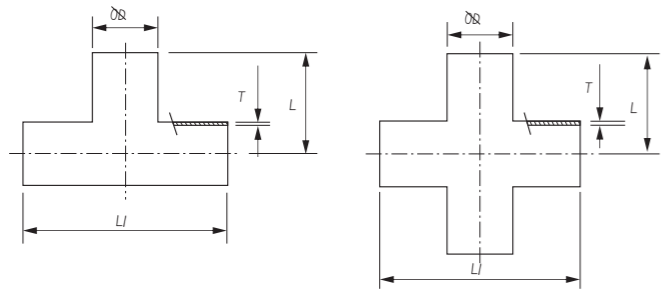
BPE-2S 90° 弯头



BPE-2S 90° Elbow DT-7

Size	D	L	T
1/2 "	12.7	76.2	1.65
3/4 "	19.05	76.2	1.65
1.0 "	25.4	76.2	1.65
1.5 "	38.1	95.3	1.65
2.0 "	50.8	120.7	1.65
2.5 "	63.5	139.7	1.65
3.0 "	76.2	158.8	1.65
4.0 "	101.6	203.2	2.10

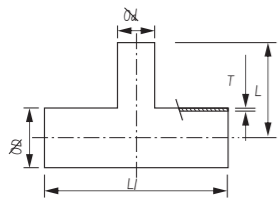
BPE-7W 三通/BPE-9W 四通



BPE-7W Tee & BPE-9W Cross DT-9

Size	D	L	L1	T
1/2 "	12.7	47.6	95.2	1.65
3/4 "	19.05	50.8	101.6	1.65
1.0 "	25.4	54	108	1.65
1.5 "	38.1	60.3	120.6	1.65
2.0 "	50.8	73	146	1.65
2.5 "	63.5	79.4	158.8	1.65
3.0 "	76.2	85.7	171.4	1.65
4.0 "	101.6	104.8	209.6	2.10

BPE-7RW 变径三通



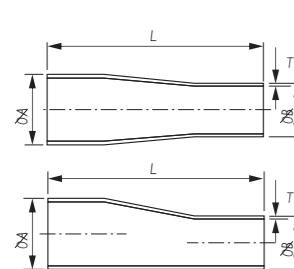
BPE-7RW Reducing Tee DT-10

Size	D	d	L	L1	T
3/4 " x 1/2 "	19.05	12.7	50.8	50.8	1.65
1 " x 1/2 "	25.4	12.7	54	54	1.65
1 " x 3/4 "	25.4	19.05	54	54	1.65
1.5 " x 1/2 "	38.1	12.7	60.3	60.3	1.65
1.5 " x 3/4 "	38.1	19.05	60.3	60.3	1.65
1.5 " x 1.0 "	38.1	25.4	60.3	60.3	1.65
2.0 " x 1.0 "	50.8	25.4	73	66.7	1.65
2.0 " x 1.5 "	50.8	38.1	73	66.7	1.65

BPE-7RW Reducing Tee DT-10

Size	D	d	L	L1	T
2.5 " x 1.5 "	63.5	38.1	79.4	73	1.65
2.5 " x 2.0 "	63.5	50.8	79.4	73	1.65
3.0 " x 1.5 "	76.2	38.1	85.7	79.4	1.65
3.0 " x 2.0 "	76.2	50.8	85.7	79.4	1.65
3.0 " x 2.5 "	76.2	63.5	85.7	79.4	1.65
4.0 " x 2.0 "	101.6	50.8	104.8	98.4	2.10
4.0 " x 2.5 "	101.6	63.5	104.8	98.4	2.10
4.0 " x 3.0 "	101.6	76.2	104.8	98.4	2.10

BPE-31 同心/BPE-32 偏心变径 BPE-31 Concertric & BPE-32 Eccentric Reducer DT-11



Size	A	B	L	T
3/4 " x 1/2 "	19.05	12.7	101.6	1.65
1 " x 1/2 "	25.4	12.7	114.3	1.65
1 " x 3/4 "	25.4	19.05	101.6	1.65
1.5 " x 1/2 "	38.1	12.7	139.7	1.65
1.5 " x 3/4 "	38.1	19.05	127	1.65
1.5 " x 1.0 "	38.1	25.4	127	1.65
2.0 " x 1.5 "	50.8	38.1	133.4	1.65
2.5 " x 1.5 "	63.5	38.1	184.2	1.65

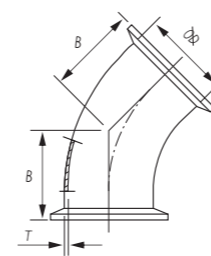
BPE-31 Concertric & BPE-32 Eccentric Reducer DT-11

Size	A	B	L	T
2.5 " x 2.0 "	63.5	50.8	139.7	1.65
3.0 " x 1.5 "	76.2	38.1	235	1.65
3.0 " x 2.0 "	76.2	50.8	190.5	1.65
3.0 " x 2.5 "	76.2	63.5	139.7	1.65
4.0 " x 1.5 "	101.6	38.1	342.9	2.10
4.0 " x 2.0 "	101.6	50.8	298.5	2.10
4.0 " x 2.5 "	101.6	63.5	247.7	2.10
4.0 " x 3.0 "	101.6	76.2	196.9	2.10

BPE FITTINGS(mm)

BPE 管件

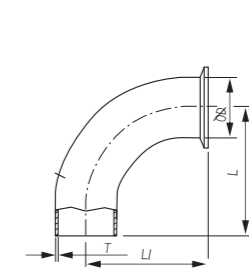
BPE-2KMP 45° 卡式弯头



BPE-2KMP 45o Clamp ElbowDT-17

Size	D	B	T
1/2 "	12.7	25.4	1.65
3/4 "	19.05	25.4	1.65
1.0 "	25.4	28.6	1.65
1.5 "	38.1	36.5	1.65
2.0 "	50.8	44.5	1.65
2.5 "	63.5	52.4	1.65
3.0 "	76.2	60.3	1.65
4.0 "	101.6	79.4	2.10

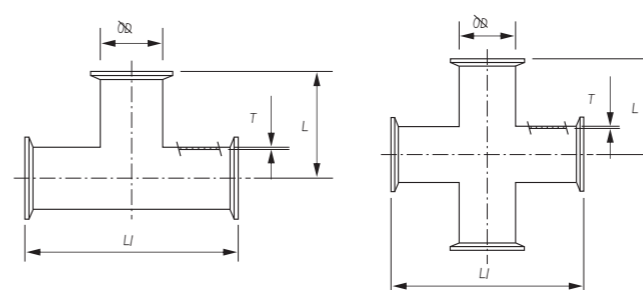
BPE-2CMP 90° 弯头



BPE-2CMP 90o ElbowDT-12

Size	D	L	L1	T
1/2 "	12.7	76.2	41.3	1.65
3/4 "	19.05	76.2	41.3	1.65
1.0 "	25.4	76.2	50.8	1.65
1.5 "	38.1	95.3	69.9	1.65
2.0 "	50.8	120.7	88.9	1.65
2.5 "	63.5	139.7	108	1.65
3.0 "	76.2	158.8	127	1.65
4.0 "	101.6	203.2	168.3	2.11

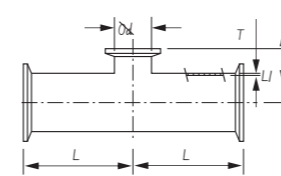
BPE-7MP 卡式三通/BPE-9MP 四通



BPE-7MP Camp Tee & BPE-9MP CrossDT-18

Size	D	L	L1	T
1/2 "	12.7	57.2	114.4	1.65
3/4 "	19.05	60.3	120.6	1.65
1.0 "	25.4	66.7	123.4	1.65
1.5 "	38.1	73	146	1.65
2.0 "	50.8	85.7	171.4	1.65
2.5 "	63.5	92.1	184.2	1.65
3.0 "	76.2	98.4	196.8	1.65
4.0 "	101.6	120.7	241.4	2.10

BPE-7RMP 卡式变径三通



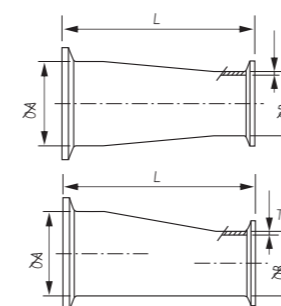
BPE-7RMP Clamp Reducing TeeDT-20

Size	D	d	L	L1	T
3/4 " x 1/2 "	19.05	12.7	63.5	25.4	1.65
1 " x 1/2 "	25.4	12.7	66.7	28.6	1.65
1 " x 3/4 "	25.4	19.05	66.7	28.6	1.65
1.5 " x 1/2 "	38.1	12.7	73	34.9	1.65
1.5 " x 3/4 "	38.1	19.05	73	34.9	1.65
1.5 " x 1.0 "	38.1	25.4	73	34.9	1.65
2.0 " x 1.0 "	50.8	25.4	85.7	41.3	1.65
2.0 " x 1.5 "	50.8	38.1	92.1	47.6	1.65

BPE-7RMP Clamp Reducing TeeDT-20

Size	D	d	L	L1	T
2.5 " x 1.5 "	63.5	38.1	92.1	47.6	1.65
2.5 " x 2.0 "	63.5	50.8	92.1	47.6	1.65
3.0 " x 1.5 "	76.2	38.1	98.4	54	1.65
3.0 " x 2.0 "	76.2	50.8	98.4	54	1.65
3.0 " x 2.5 "	76.2	63.5	98.4	54	1.65
4.0 " x 2.0 "	101.6	50.8	120.7	66.7	2.10
4.0 " x 2.5 "	101.6	63.5	120.7	66.7	2.10
4.0 " x 3.0 "	101.6	76.2	120.7	66.7	2.10

BPE-31-14MP 同心/BPE-32-14MP 偏心变径



BPE-31-14MP Concertric &

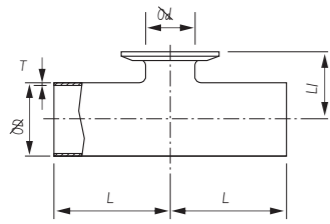
Size	A	B	L	T
3/4 " x 1/2 "	19.05	12.7	50.8	1.65
1 " x 1/2 "	25.4	12.7	63.5	1.65
1 " x 3/4 "	25.4	19.05	50.8	1.65
1.5 " x 1/2 "	38.1	12.7	88.9	1.65
1.5 " x 3/4 "	38.1	19.05	76.2	1.65
1.5 " x 1.0 "	38.1	25.4	76.2	1.65
2.0 " x 1.5 "	50.8	38.1	76.2	1.65
2.5 " x 1.5 "	63.9	38.1	127	1.65

BPE-32-14MP Eccentric ReduceDT-21

Size	A	B	L	T
2.5 " x 2.0 "	63.5	50.8	76.2	1.65
3.0 " x 1.5 "	76.2	38.1	117.8	1.65
3.0 " x 2.0 "	76.2	50.8	127	1.65
3.0 " x 2.5 "	76.2	63.5	76.2	1.65
4.0 " x 1.5 "	101.6	38.1	282.6	2.10
4.0 " x 2.0 "	101.6	50.8	231.8	2.10
4.0 " x 2.5 "	101.6	63.5	181	2.10
4.0 " x 3.0 "	101.6	76.2	130.2	2.10

BPE FITTINGS(mm) BPE 管件

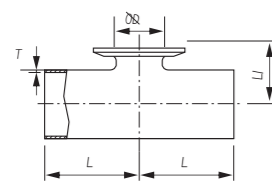
BPE-短输出焊接/对夹异径三通



DT-14 BPE-Short Outlet Weld

Size	D	d	L	L1	T
3/4" x 1/2"	19.05	12.7	50.8	25.4	1.65
1.0" x 1/2"	25.4	12.7	51	28.6	1.65
1.0" x 3/4"	25.4	19.05	51	28.6	1.65
1.5" x 3/4"	38.1	12.7	60.3	34.9	1.65
1.5" x 3/4"	38.1	19.05	60.3	34.9	1.65
1.5" x 1.0"	38.1	25.4	60.3	34.9	1.65
2.0" x 1/2"	50.8	12.7	73	41.3	1.65
2.0" x 3/4"	50.8	19.05	73	41.3	1.65
2.0" x 1.0"	50.8	25.4	73	41.3	1.65
2.0" x 1.5"	50.8	38.1	73	41.3	1.65
2.5" x 1/2"	63.5	12.7	79.4	47.6	1.65
2.5" x 3/4"	63.5	19.05	79.4	47.6	1.65
2.5" x 1.0"	63.5	25.4	79.4	47.6	1.65

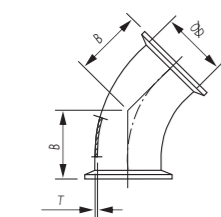
BPE-同径输出焊接/对夹三通



DT-15BPE-Equal Outlet Weld/Clamp Tee

Size	D	L	L1	T
1/2"	12.7	47.6	25.4	1.6
3/4"	19.05	50.8	28.6	1.6
1.0"	25.4	54	28.6	1.6
1.5"	38.1	60.3	34.9	1.6
2.0"	50.8	73	41.3	1.6
2.5"	63.5	79.4	47.6	1.6
3.0"	76.2	85.7	54	1.6
4.0"	101.6	104.8	69.9	2.11

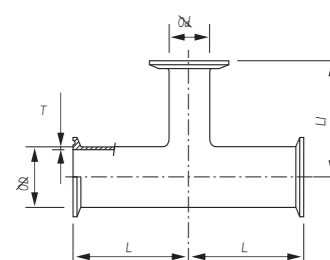
BPE-2KMP 45° 对夹弯头



DT-17 BPE-2KMP 45° Clamp Elbow

Size	D	B	T
1/2"	12.7	25.4	1.65
3/4"	19.05	25.4	1.65
1.0"	25.4	28.6	1.65
1.5"	38.1	36.5	1.65
2.0"	50.8	44.5	1.65
2.5"	63.5	52.4	1.65
3.0"	76.2	60.3	1.65
4.0"	101.6	79.4	2.10

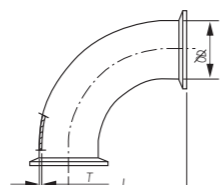
BPE-异径三通对夹末端



DT-19 BPE-Reducing Tee Clamp End

Size	D	d	L	L1	T
3/4" x 1/2"	19.05	12.7	63.5	63.5	1.65
1" x 1/2"	25.4	12.7	66.7	66.7	1.65
1" x 3/4"	25.4	19.05	66.7	66.7	1.65
1.5" x 1/2"	38.1	12.7	73	73	1.65
1.5" x 3/4"	38.1	19.05	73	73	1.65
1.5" x 1.0"	38.1	25.4	73	73	1.65
2.0" x 1.0"	50.8	25.4	85.7	79.4	1.65
2.0" x 1.5"	50.8	38.1	85.7	79.4	1.65
2.5" x 1.0"	63.5	25.4	92.1	85.7	1.65
2.5" x 1.5"	63.5	38.1	92.1	85.7	1.65

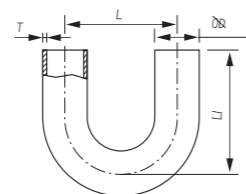
BPE-2CMP 90° 对夹弯头



DT-16BPE-2CMP 90° Clamp Elbow

Size	D	B	T
1/2"	12.7	41.3	1.65
3/4"	19.05	41.3	1.65
1.0"	25.4	50.8	1.65
1.5"	38.1	69.9	1.65
2.0"	50.8	88.9	1.65
2.5"	63.5	108	1.65
3.0"	76.2	127	1.65
4.0"	101.6	168.3	2.10

BPE-180° 管弯头



DT-23 BPE-180° Tube Elbow

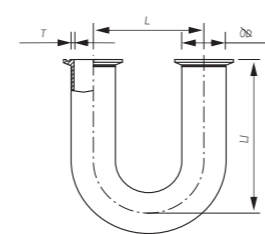
Size	D	L	L1	T
1/2"	12.7	114.3	76.2	1.6
3/4"	19.05	114.3	76.2	1.6
1.0"	25.4	114.3	76.2	1.6
1.5"	38.1	152.4	114.3	1.6
2.0"	50.8	152.4	127	1.6
2.5"	63.5	190.5	146.1	1.6
3.0"	76.2	228.6	165.1	1.6
4.0"	101.6	304.8	215.9	2.11

DT-14 BPE-Short Outlet Weld

Size	D	d	L	L1	T
2.5" x 1.5"	63.5	38.1	79.4	47.6	1.65
2.5" x 2.0"	63.5	50.8	79.4	47.6	1.65
3.0" x 1/2"	76.2	12.7	85.7	54	1.65
3.0" x 3/4"	76.2	19.05	85.7	54	1.65
3.0" x 1.0"	76.2	25.4	85.7	54	1.65
3.0" x 1.5"	76.2	38.1	85.7	54	1.65
3.0" x 2.0"	76.2	50.8	85.7	54	1.65
3.0" x 2.5"	76.2	63.5	85.7	54	1.65
4.0" x 1.0"	101.6	25.4	104.8	66.7	2.11
4.0" x 1.5"	101.6	38.1	104.8	66.7	2.11
4.0" x 2.0"	101.6	50.8	104.8	66.7	2.11
4.0" x 2.5"	101.6	63.5	104.8	66.7	2.11
4.0" x 3.0"	101.6	76.2	104.8	66.7	2.11

BPE FITTINGS(mm) BPE 管件

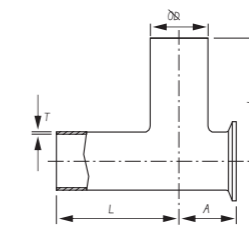
BPE-180° 对夹接头



DT-24BPE-180° Clamp Joint

Size	D	A	L1	T
1/2"	12.7	114.3	88.9	1.65
3/4"	19.05	114.3	88.9	1.65
1.0"	25.4	114.3	88.9	1.65
1.5"	38.1	152.4	127	1.65
2.0"	50.8	152.4	139.7	1.65
2.5"	63.5	190.5	165.1	1.65
3.0"	76.2	228.6	177.8	1.65
4.0"	101.6	304.8	231.8	2.11

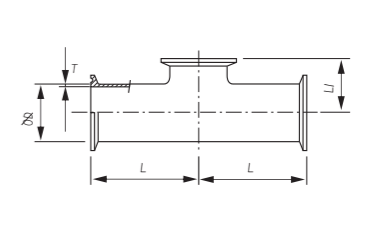
BPE-短输出三通管接头



DT-25BPE-Short Outlet Run Tee

Size	D	A	L1	T
1/2"	12.7	22.2	47.6	1.65
3/4"	19.05	25.4	50.8	1.65
1.0"	25.4	28.6	54	1.65
1.5"	38.1	34.9	63.0	1.65
2.0"	50.8	41.3	73	1.65
2.5"	63.5	47.6	79.4	1.65
3.0"	76.2	54.0	85.7	1.65
4.0"	101.6	69.9	104.8	2.11

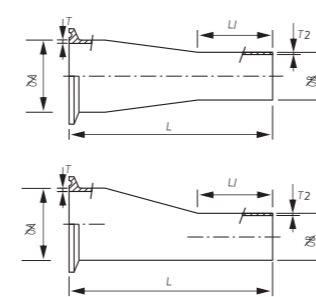
BPE-短输出三通对夹末端



DT-26BPE-Short Outlet Tee Clamp End

Size	D	A	L1	T
1/2"	12.7	57.2	25.4	1.65
3/4"	19.05	60.3	28.6	1.65
1.0"	25.4	66.7	28.6	1.65
1.5"	38.1	73	34.9	1.65
2.0"	50.8	85.7	41.3	1.65
2.5"	63.5	92.1	47.6	1.65
3.0"	76.2	98.4	54	1.65
4.0"	101.6	120.7	69.9	2.11

BPE-同心及偏心异径管节对夹末端



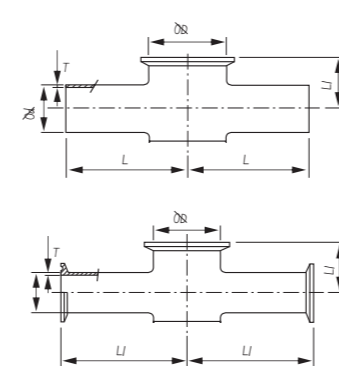
DT-27BPE-Concentric & Eccentric Reducer Clamp End

Size	A	B	L	T1	T2
3/4" x 1/2"	19.05	12.7	76.2	1.65	1.65
1" x 1/2"	25.4	12.7	88.9	1.65	1.65
1" x 3/4"	25.4	19.05	76.2	1.65	1.65
1.5" x 1/2"	38.1	12.7	114.3	1.65	1.65
1.5" x 3/4"	38.1	19.05	101.6	1.65	1.65
1.5" x 1.0"	38.1	25.4	101.6	1.65	1.65
2.0" x 1/2"	50.8	12.7	165.4	1.65	1.65
2.0" x 3/4"	50.8	19.05	152.4	1.65	1.65
2.0" x 1.0"	50.8	25.4	152.4	1.65	1.65
2.0" x 1.5"	50.8	38.1	101.6	1.65	1.65

BPE-Concentric & Eccentric Reducer Clamp End

Size	A	B	L	T1	T2
2.5" x 1.5"	63.5	38.1	152.4	1.65	1.65
2.5" x 2.0"	63.5	50.8	108	1.65	1.65
3.0" x 1.5"	76.2	38.1	203.2	1.65	1.65
3.0" x 2.0"	76.2	50.8	158.8	1.65	1.65
3.0" x 2.5"	76.2	63.5	108	2.11	1.65
4.0" x 1.5"	101.6	38.1	308	2.11	1.65
4.0" x 2.0"	101.6	50.8	263.5	2.11	1.65
4.0" x 2.5"	101.6	63.5	212.7	2.11	1.65
4.0" x 3.0"	101.6	76.2	161.9	2.11	1.65

BPE-仪表三通对夹/焊接末端



DT-28/ DT-29

Size	D	d	L	L1	L2	T
1.0" x 1/2"	25.4	12.7	63.5	22.2	77	1.65
1.0" x 3/4"	25.4	19.05	63.5	25.4	77	1.65
1.5" x 1/2"	38.1	12.7	63.5	22.2	76.2	1.65
1.5" x 3/4"	38.1	19.05	63.5	25.4	76.2	1.65
1.5" x 1.0"	38.1	25.4	63.5	28.6	76.2	1.65
2.0" x 1/2"	50.8	12.7	69.9	25.4	82.6	1.65
2.0" x 3/4"	50.8	19.05	69.9	28.6	82.6	1.65
2.0" x 1.0"	50.8	25.4	69.9	31.8	82.6	1.65
2.0" x 1.5"	50.8	38.1	69.9	38.1	82.6	1.65
2.5" x 1/2"	63.5	12.7	85	35	97	1.65
2.5" x 3/4"	63.5	19.05	85	38.1	97	1.65
2.5" x 1.0"	63.5	25.4	85	41.3	97	1.65
2.5" x 1.5"	63.5	38.1	85	44.5	97	1.65
2.5" x 2.0"	63.5	50.8	85	48	97	1.65

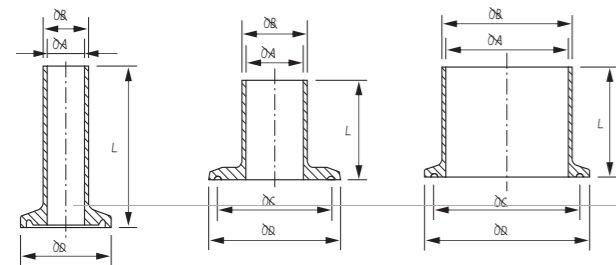
BPE-Instrument Tee Clamp / Weld End

Size	D	d	L	L1	L2	T
3.0" x 1/2"	76.2	12.7	90	102	102	1.65
3.0" x 3/4"	76.2	19.05	90	102	102	1.65
3.0" x 1.0"	76.2	25.4	90	102	102	1.65
3.0" x 1.5"	76.2	38.1	90	102	102	1.65
3.0" x 2.0"	76.2	50.8	90	102	102	1.65
3.0" x 2.5"	76.2	63.5	90	102	102	1.65
4.0" x 1/2"	101.6	12.7	110	122	122	1.65
4.0" x 3/4"	101.6	19.05	110	122	122	1.65
4.0" x 1.0"	101.6	25.4	110	122	122	1.65
4.0" x 1.5"	101.6	38.1	110	122	122	1.65
4.0" x 2.0"	101.6	50.8	110	122	122	1.65
4.0" x 2.5"	101.6	63.5	110	122	122	1.65
4.0" x 3.0"	101.6	76.2	110	122	122	1.65

BPE FITTINGS(mm)

BPE 管件

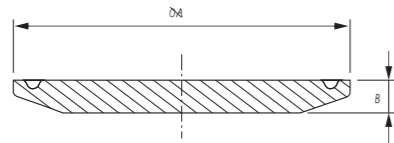
BPE-14MP-AWF 焊接套圈



BPE-14AMP-AWF Weld Ferrule

Size	A	B	C	D	L	L1	L2
1/2 "	9.40	12.7		25	44.5	12.7	28.6
3/4 "	15.7	19.1		25	44.5	12.7	28.6
1.0 "	22.1	25.4	43.5	50.5	44.5	12.7	28.6
1.5 "	34.8	38.1	43.5	50.5	44.5	12.7	28.6
2.0 "	47.5	50.8	56.5	64.0	57.2	12.7	28.6
2.5 "	60.2	63.5	70.5	77.5	57.2	12.7	28.6
3.0 "	72.9	76.2	83.5	91.0	57.2	12.7	28.6
4.0 "	97.4	101.6	110.0	119.0	57.2	12.7	28.6

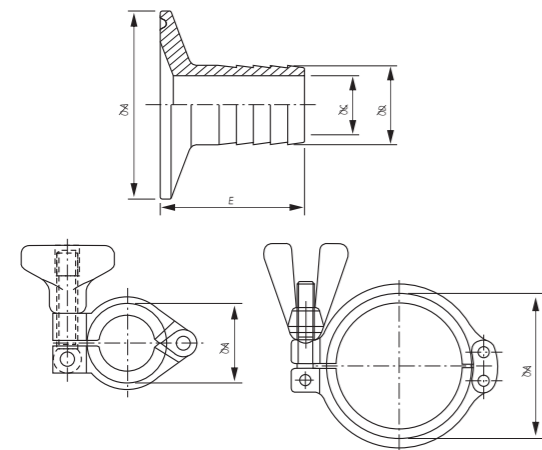
BPE-16AMP- 固体终端螺帽



BPE-16AMP Solidedn Cap

Size	A	B
1/2 "-3/4 "	25.4	5
1.0 "-1.5 "	50.5	6.35
2.0 "	64	6.35
2.5 "	77.5	6.35
3.0 "	91.1	6.35
4.0 "	119	8

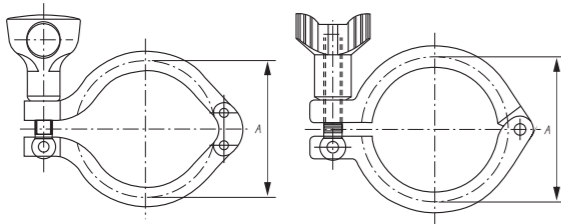
BPE-14MPHR 橡胶软管适配器



BPE-14MPHR Rubber Hose Adapter

Size	D	L	L1	T
1/2 "	50.5	9.50	13.7	38.1
3/4 "	50.5	15.8	21.4	38.1
1.0 "	50.5	20.6	25.4	42.86
1.5 "	50.5	33.2	38.1	42.86
2.0 "	64.0	46.0	50.8	58.74
2.5 "	77.5	58.7	63.5	59.8
3.0 "	91.01	72	76.2	78.42
4.0 "	119	97.6	101.6	86.52

Size:1/2 " -3/4 " (13MHHM & 13MHH & 13SF)



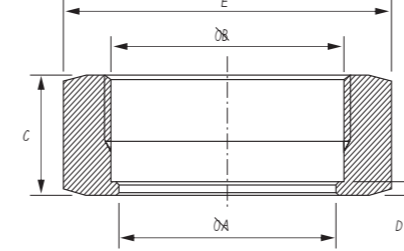
13MHH & 13MHHM

Size	A
1/2 "-3/4 "	28.2
1.0 "-1.5 "	53.6
2.0 "	67
2.5 "	80.6
3.0 "	94
4.0 "	122
6.0 "	175
8.0 "	226

IDF UNIONS(mm)

IDF 活接头

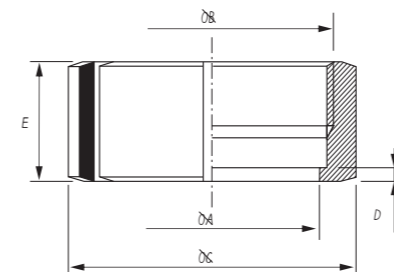
IDF 六角螺母 IDF-13H



IDF Hexagonal Nut IDF-13H

Size	A	B	C	D	E
1.0 "	30.5	34.34 × 8T ACME	30	3.5	46
1.5 "	43.5	47.86 × 8T ACME	30	3.5	60
2.0 "	57.0	61.37 × 8T ACME	30	3.5	75
2.5 "	70.7	74.88 × 8T ACME	30	3.5	90
3.0 "	83.3	88.40 × 8T ACME	30	3.5	105
4.0 "	112.0	122.05 × 6T ACME	34.9	4.7	133

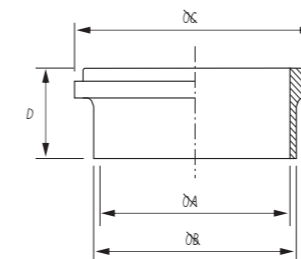
IDF 圆螺母 IDF-13R



IDF Round Nut IDF-13R

Size	A	B	C	D	E
1.0 "	30.5	34.34 × 8T ACME	48	3.5	30
1.5 "	43.5	47.86 × 8T ACME	64	3.5	30
2.0 "	57.0	61.37 × 8T ACME	77	3.5	30
2.5 "	70.7	74.97 × 8T ACME	91	3.5	30
3.0 "	83.3	88.40 × 8T ACME	104	3.5	30
4.0 "	110	122.05 × 8T ACME	135	4.7	34.9

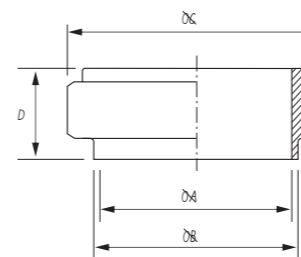
IDF 焊接接头 IDF-14



IDF Welding Liner IDF-14

Size	A	B	C	D
1.0 "	22.1	25.4	33.8	21.5
1.5 "	34.8	38.1	47.0	21.5
2.0 "	47.5	50.8	60.5	21.5
2.5 "	60.2	63.5	74.0	21.5
3.0 "	72.9	76.2	87.5	21.5
4.0 "	97.6	101.6	120.6	30.0

IDF 焊接云头 IDF-15



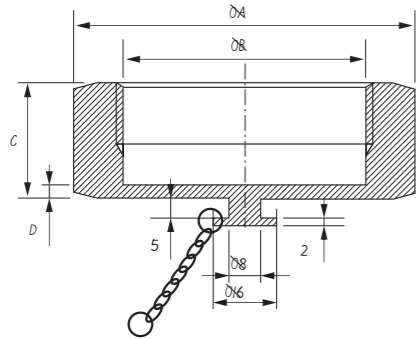
IDF Welding Male IDF-15

Size	A	B	C	D
1.0 "	22.1	25.4	37.13 × 8T ACME	21.5
1.5 "	34.8	38.1	50.65 × 8T ACME	21.5
2.0 "	47.5	50.8	64.16 × 8T ACME	21.5
2.5 "	60.2	63.5	77.67 × 8T ACME	21.5
3.0 "	72.9	76.2	91.19 × 8T ACME	21.5
4.0 "	97.6	101.6	125.9 × 6T ACME	30.0

IDF EXPANDING UNIONS(mm)

IDF 膨胀活接头

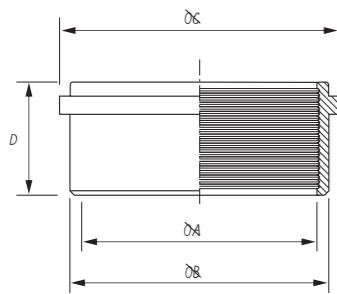
IDF 螺母 IDF-13HBN



IDF Blanks Nut IDF-13HBN

Size	A	B	C	D
1.0 "	46	34.34 × 8T ACME	30	3.5
1.5 "	60	47.86 × 8T ACME	30	3.5
2.0 "	75	61.37 × 8T ACME	30	3.5
2.5 "	90	74.88 × 8T ACME	30	3.5
3.0 "	105	88.40 × 8T ACME	30	3.5
4.0 "	133	122.05 × 6T ACME	34.9	4.7

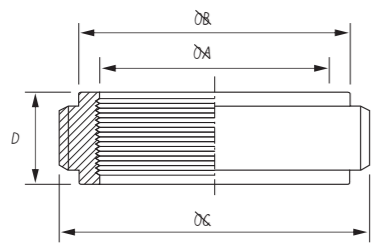
IDF 接头 IDF-14R



IDF Expanding Liner IDF-14R

Size	A	B	C	D
1 "	25.5	29.2	33.8	20
1.5 "	38.2	42.7	47.0	20
2 "	50.9	56.2	60.5	25
2.5 "	63.6	69.9	74.0	30
3 "	76.3	82.6	87.5	30
4 "	101.7	111.1	120.6	30

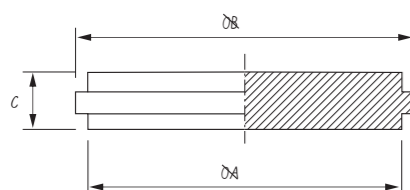
IDF 膨胀云头 IDF-15R



IDF Expanding Male IDF-15R

Size	A	B	C	D
1.0 "	25.5	29.2	37.13 × 8T ACME	16.5
1.5 "	38.2	42.7	50.65 × 8T ACME	19.5
2.0 "	50.9	56.2	64.16 × 8T ACME	19.5
2.5 "	63.6	69.9	77.46 × 8T ACME	25.0
3.0 "	76.3	82.6	91.19 × 8T ACME	30.0
4.0 "	101.7	111.1	125.9 × 6T ACME	35.0

IDF 堵头 IDF-16AMP



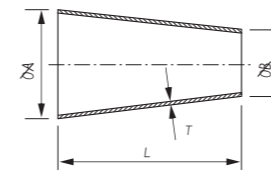
IDF Blanks IDF-16AMP

Size	A	B	C
1.0 "	29.2	33.8	10.5
1.5 "	42.7	47.0	10.5
2.0 "	56.2	60.5	10.5
2.5 "	69.9	74.0	10.5
3.0 "	82.6	87.5	10.5
4.0 "	111.1	114.1	12.6

VACUUM COMPONENTS

真空零件

偏心变径



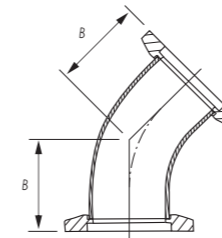
Concentric Reducer

Size	B	C	L	T
1.5 " × 1.0 "	38.1	25.4	50.8	1.65
2.0 " × 1.5 "	50.8	38.1	50.8	1.65
2.5 " × 1.5 "	63.5	38.1	101.6	1.65
2.5 " × 2.0 "	63.5	50.8	50.8	1.65
3.0 " × 1.5 "	76.2	38.1	152.4	1.65
3.0 " × 2.0 "	76.2	50.8	101.6	1.65

Concentric Reducer

Size	B	C	L	T
3.0 " × 2.5 "	76.2	63.5	50.8	1.65
4.0 " × 1.5 "	101.6	38.1	254.0	1.65
4.0 " × 2.0 "	101.6	50.8	203.2	2.10
4.0 " × 2.5 "	101.6	63.5	152.4	2.10
4.0 " × 3.0 "	101.6	76.2	101.6	2.10

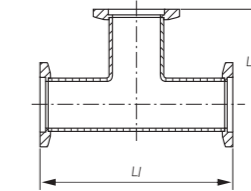
45o 弯头(法兰)



Tube45° Elbow Flange

Size	O.D	B
KF25	1.0 "	28.5
KF40	1.5 "	42.7
KF50	2.0 "	50.8

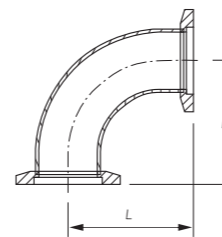
三通法兰



TubeTee Flange

Size	O.D	L	L1
KF25	1.0 "	51.6	103.2
KF40	1.5 "	61.0	122
KF50	2.0 "	80.0	160

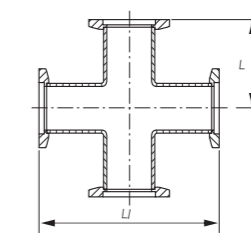
90o 弯头(法兰)



Tube90o Elbow Flange

Size	O.D	L
KF25	1.0 "	51.6
KF40	1.5 "	61.0
KF50	2.0 "	80.0

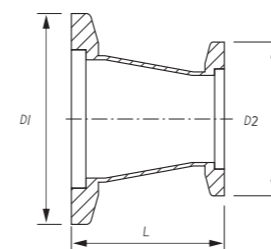
四通(法兰)



Tube4-Way Cross Flange

Size	O.D	L	L1
KF25	1.0 "	51.6	103.2
KF40	1.5 "	61.0	122
KF50	2.0 "	80.0	160

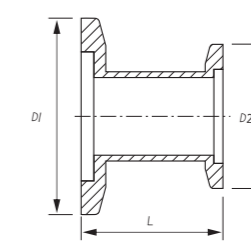
直变径



Straight Reducer

D1	D2	L
KF25	KF16	39.9
KF40	KF16	39.9
KF40	KF25	39.9
KF50	KF16	39.9
KF50	KF25	39.9
KF50	KF40	39.9

直变径



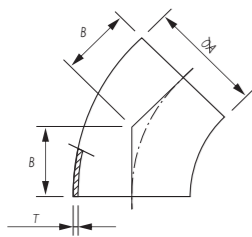
Straight Reducer

D1	D2	L
KF25	KF16	39.9
KF40	KF16	39.9
KF40	KF25	39.9
KF50	KF16	39.9
KF50	KF25	39.9
KF50	KF40	39.9

VACUUM COMPONENTS

真空零件

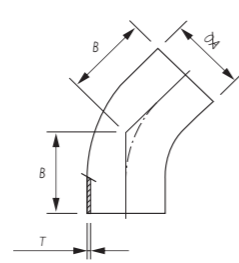
45° 短弯头
45° Short Elbow



45° 弯头 45° Elbow

Size	A	B	T
1.0 "	25.4	15.8	1.65
1.5 "	38.1	23.8	1.65
2.0 "	50.8	31.75	1.65
2.5 "	63.5	39.6	1.65
3.0 "	76.2	47.6	1.65
4.0 "	101.6	63.5	2.10

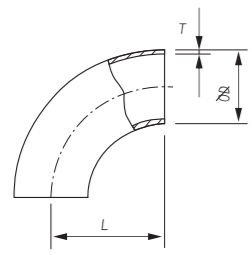
45° 长弯头
45° Long Elbow



45° 弯头 45° Elbow

Size	A	B	T
1.0 "	25.4	30.2	1.65
1.5 "	38.1	41.3	1.65
2.0 "	50.8	58.7	1.65
2.5 "	63.5	76.2	1.65
3.0 "	76.2	93.7	1.65
4.0 "	101.6	122.2	2.10

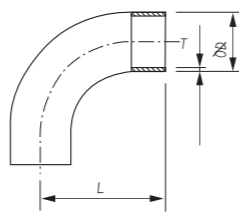
90° 短弯头
90° Short Elbow



90° 弯头 90° Elbow

Size	A	B	T
1.0 "	25.4	38.10	1.65
1.5 "	38.1	57.20	1.65
2.0 "	50.8	76.20	1.65
2.5 "	63.5	95.25	1.65
3.0 "	76.2	114.30	1.65
4.0 "	101.6	152.40	2.10

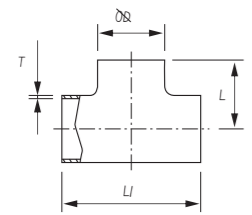
90° 长弯头
90° Long Elbow



90° 弯头 90° Elbow

Size	A	B	T
1.0 "	25.4	52.4	1.65
1.5 "	38.1	74.6	1.65
2.0 "	50.8	103.2	1.65
2.5 "	63.5	131.8	1.65
3.0 "	76.2	160.3	1.65
4.0 "	101.6	211.1	2.10

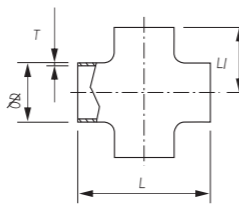
三通



Tee

Size	D	L	L1	T
1.0 "	25.4	47.6	95.2	1.65
1.5 "	38.1	57.2	114.4	1.65
2.0 "	50.8	76.2	152.4	1.65
2.5 "	63.5	76.2	152.4	1.65
3.0 "	76.2	82.6	165.2	1.65
4.0 "	101.6	98.4	196.8	2.10

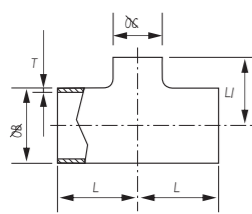
四通



Cross

Size	D	L	L1	T
1.0 "	25.4	95.2	47.6	1.65
1.5 "	38.1	114.4	57.2	1.65
2.0 "	50.8	152.4	76.2	1.65
2.5 "	63.5	152.4	76.2	1.65
3.0 "	76.2	165.2	82.6	1.65
4.0 "	101.6	196.8	98.4	2.10

变径三通



Reducing Tee

Size	B	C	L	L1	T
1.5 " x 1.0 "	38.1	25.4	57.15	53.98	1.65
2.0 " x 1.0 "	50.8	25.4	76.20	60.30	1.65
2.0 " x 1.5 "	50.8	38.1	76.20	63.50	1.65
2.5 " x 1.5 "	63.5	38.1	76.20	69.85	1.65
2.5 " x 2.0 "	63.5	50.8	76.20	82.55	1.65
3.0 " x 1.5 "	76.2	38.1	82.55	76.20	1.65

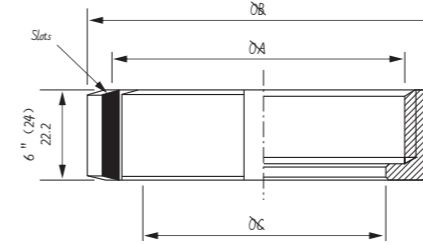
Reducing Tee

Size	B	C	L	L1	T
3.0 " x 2.0 "	76.2	50.8	82.55	88.90	1.65
3.0 " x 2.5 "	76.2	63.5	82.55	82.55	1.65
4.0 " x 2.0 "	101.6	50.8	98.40	101.60	2.10
4.0 " x 2.5 "	101.6	63.5	98.40	95.25	2.10
4.0 " x 3.0 "	101.6	76.2	98.40	95.25	2.10

RJT UNIONS (mm)

RJT 活接头

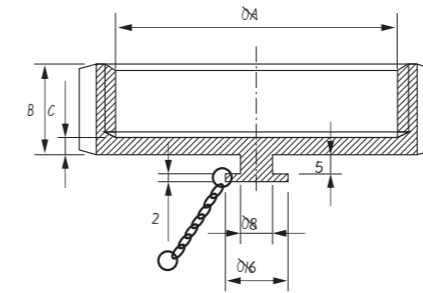
RJT 圆螺母 RJT-13R



RJT Round Nut RJT-13R

Size	A	B	C	Slots
1.0 "	42.266 x 8TPI WHIT	58.5	33.45	4
1.5 "	54.966 x 8TPI WHIT	74	46.0	4
2.0 "	67.920 x 6TPI WHIT	85.5	58.67	6
2.5 "	80.620 x 6TPI WHIT	98.5	71.4	6
3.0 "	93.320 x 6TPI WHIT	111.6	84.1	8
4.0 "	118.72 x 6TPI WHIT	138.0	109.7	8
6.0 "	169.52 x 6TPI WHIT	197.0	163.0	10

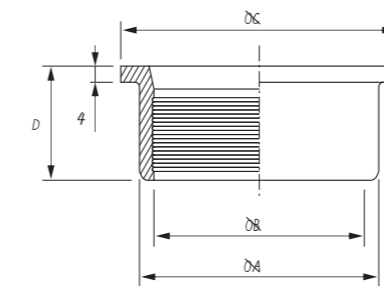
RJT 六角空白螺母 RJT-13HBN



RJT Hexagonal Blank Nut RJT-13HBN

Size	A	B	Slots
1.0 "	42.266 x 8TPI WHIT	22.2	4
1.5 "	54.966 x 8TPI WHIT	22.2	4
2.0 "	67.920 x 6TPI WHIT	22.2	4
2.5 "	80.620 x 6TPI WHIT	22.2	4
3.0 "	93.320 x 6TPI WHIT	22.2	4
4.0 "	118.720 x 6TPI WHIT	22.2	4

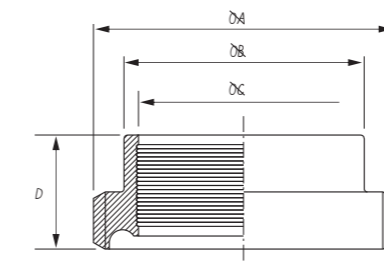
RJT 膨胀接头 RJT-14R



RJT Expanding Liner RJT-14R

Size	A	B	C	D
1.0 "	32.5	25.5	41.3	20
1.5 "	45.2	38.2	54.0	24
2.0 "	57.9	50.9	66.7	28
2.5 "	70.6	63.6	79.4	32
3.0 "	83.3	76.3	92.1	32
4.0 "	108.7	101.7	117.5	32

RJT 膨胀云头 RJT-15R



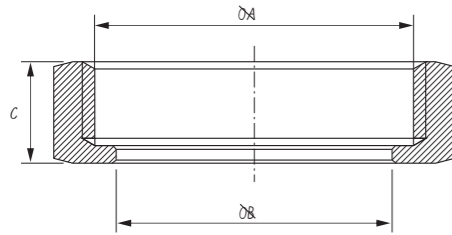
RJT Expanding MALE RJT-15R

Size	A	B	C	D
1.0 "	45.72 x 8T WHIT	32.5	25.5	20
1.5 "	58.42 x 8T WHIT	45.2	38.2	24
2.0 "	72.72 x 6T WHIT	57.9	50.9	28
2.5 "	85.42 x 6T WHIT	70.6	63.6	32
3.0 "	98.12 x 6T WHIT	83.3	76.3	32
4.0 "	123.82 x 6T WHIT	108.7	101.7	32

CIP UNIONS(mm)

CIP 活接头

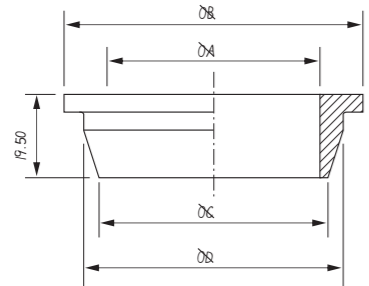
RJT 六角螺母 RJT-13H



RJT Hexagonal Nut RJT-13H

Size	A	B	C
1.0 "	42.266 × 8TPI WHIT	33.45	22.2
1.5 "	54.966 × 8TPI WHIT	46.0	22.2
2.0 "	67.920 × 6TPI WHIT	58.67	22.2
2.5 "	80.620 × 6TPI WHIT	71.4	22.2
3.0 "	93.320 × 6TPI WHIT	84.1	22.2
4.0 "	118.72 × 6TPI WHIT	109.7	22.2

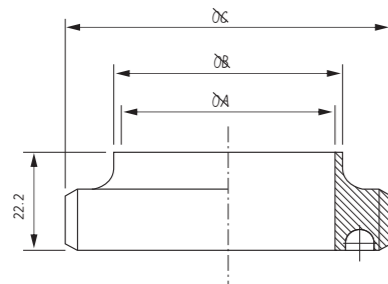
CIP 焊接接头 CIP-14



CIP Welding Liner CIP-14

Size	A	B	C	D
1.0 "	22.2	41.3	25.4	32.5
1.5 "	34.9	54.0	38.1	45.2
2.0 "	47.6	66.7	50.8	57.9
2.5 "	60.3	79.4	63.5	70.6
3.0 "	73.0	92.1	76.2	83.3
4.0 "	97.6	117.5	101.6	108.7

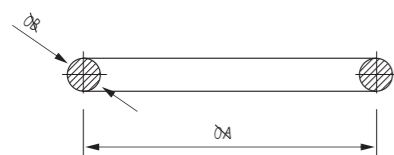
CIP 焊接云头 CIP-15



CIP Welding Male CIP-15

Size	A	B	C
1.0 "	22.2	25.4	45.72 × 8T WHIT
1.5 "	34.9	38.1	58.42 × 8T WHIT
2.0 "	47.6	50.8	72.72 × 6T WHIT
2.5 "	60.3	63.5	85.42 × 6T WHIT
3.0 "	73.0	76.2	98.12 × 6T WHIT
4.0 "	97.6	101.6	123.52 × 6T WHIT

密封圈



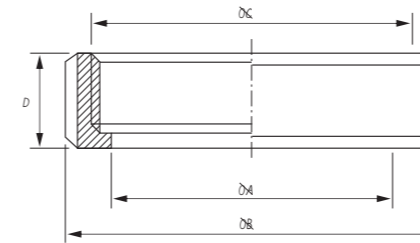
Seal Ring

Size	A	B
1.0 "	33.3	6.6
1.5 "	46.0	6.6
2.0 "	58.7	6.6
2.5 "	71.4	6.6
3.0 "	84.1	6.6
4.0 "	109.5	6.6

SMS WELDED UNIONS(mm)

SMS 焊接活接头

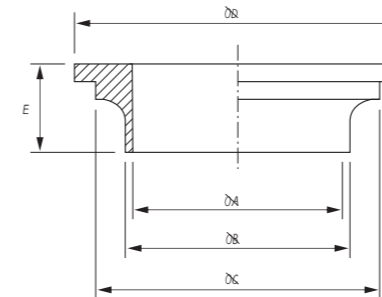
SMS 6 槽螺母



SMS Nut 6 Slots

Size	A	B	C	D
25	32.8	51	RD 40 × 1/6	19
38	48	72	RD 60 × 1/6	21
51	60.5	82	RD 70 × 1/6	21
63	74	98	RD 85 × 1/6	24
76	87	112	RD 98 × 1/6	25
101.6	112	140	RD 125 × 1/6	27
101.6	117	148	RD 132 × 1/6	30

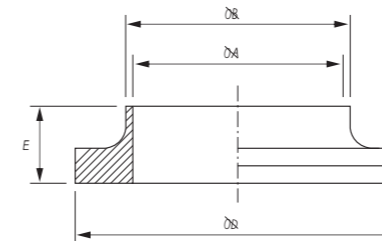
SMS 焊接接头



SMS Welding Liner

Size	A	B	C	D	E
25	22.4	25.4	32	36	13.5
38	35.1	38.1	47	56	14
51	47.8	50.8	59.5	66	14
63	59.5	63.5	73	81	14
76	72.2	76.2	86	94	14
101.6	97.6	101.6	111	121	17
101.6	97.6	101.6	116	128	18

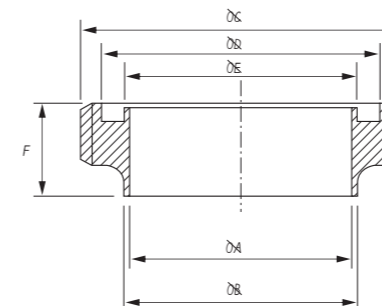
SMS 焊接接头



SMS Welding Liner

Size	A	B	D	E
25	22.4	25.4	36	10
38	35.1	38.1	56	11
51	47.8	50.8	66	11
63	59.5	63.5	81	12
76	72.2	76.2	94	12
101.6	97.6	101.6	121	13

SMS 焊接云头

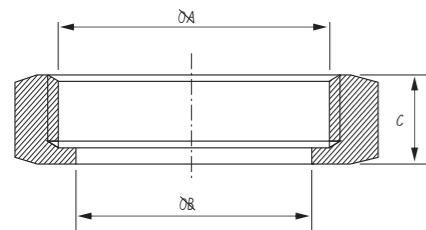


SMS Welding Male

Size	A	B	C	D	E	F
25	22.4	25.4	RD 40 × 1/6	32	25	18
38	35.1	38.1	RD 60 × 1/6	48	38	20
51	47.8	50.8	RD 70 × 1/6	61	51	20
63	59.5	63.5	RD 85 × 1/6	73.5	63.5	22
76	72.2	76.2	RD 98 × 1/6	86	76.1	23
101.6	97.6	101.6	RD 125 × 1/6	114	101.6	24
101.6	97.6	101.6	RD 132 × 1/6	114	101.6	28

RJT UNIONS(mm) RJT 活接头

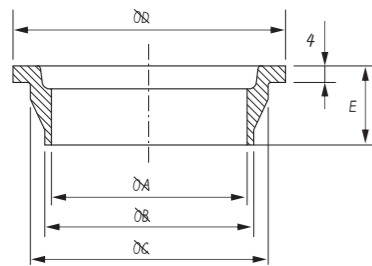
RJT 六角螺母 RJT-13H



RJT Hexagonal Nut RJT-13H

Size	A	B	C
1.0 "	42.266 × 8TPI WHIT	33.45	22.2
1.5 "	54.966 × 8TPI WHIT	46.0	22.2
2.0 "	67.920 × 6TPI WHIT	58.67	22.2
2.5 "	80.620 × 6TPI WHIT	71.4	22.2
3.0 "	93.320 × 6TPI WHIT	84.1	22.2
4.0 "	118.720 × 6TPI WHIT	109.7	22.2
6.0 "	169.520 × 6TPI WHIT	163.0	24.0

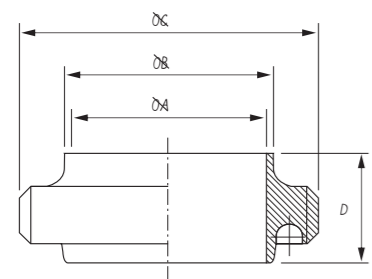
RJT 焊接接头 RJT-14



RJT Welding Liner RJT-14

Size	A	B	C	D	E
1.0 "	22.1	25.4	32.5	41.3	19.5
1.5 "	34.8	38.1	45.2	54.0	19.5
2.0 "	47.5	50.8	57.9	66.7	19.5
2.5 "	60.2	63.5	70.6	79.4	19.5
3.0 "	72.9	76.2	83.3	92.1	19.5
4.0 "	97.6	101.6	108.7	117.5	19.5
6.0 "	148.0	152.4	161.8	169.1	23.5

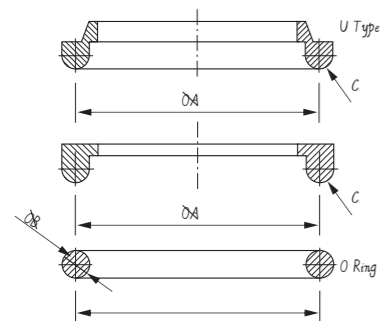
RJT 焊接云头 RJT-15



RJT Welding Male RJT-15

Size	A	B	C	D
1.0 "	22.1	25.4	45.72 × 8TPI WHIT	27
1.5 "	34.9	38.1	58.42 × 8TPI WHIT	27
2.0 "	47.6	50.8	72.72 × 6TPI WHIT	27
2.5 "	60.2	63.5	85.42 × 6TPI WHIT	27
3.0 "	72.9	76.2	98.12 × 6TPI WHIT	27
4.0 "	97.6	101.6	123.52 × 6TPI WHIT	27
6.0 "	148.0	152.4	174.32 × 6TPI WHIT	27

RJT 密封圈 (三元乙丙橡胶, 硅,)

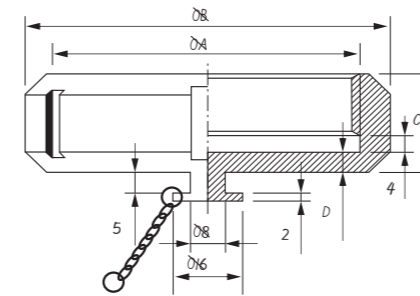


RJT Seal Ring (EPDM, Silicon, Viton)

Size	A	B	C
1.0 "	33.3	6.6	3.2
1.5 "	46.0	6.6	3.2
2.0 "	58.7	6.6	3.2
2.5 "	71.4	6.6	3.2
3.0 "	84.1	6.6	3.2
4.0 "	109.5	6.6	3.2
6.0 "	162.6	6.6	3.2

SMS EXPANDING UNIONS(mm) SMS 膨胀活接头

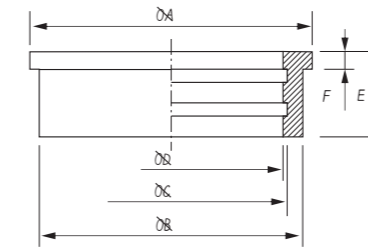
SMS 空螺母 6 13 RBN



SMS Blank Nut 6 13RBN

Size	A	B	C	D
25	RD 40 × 1/6	51	19	4
32	RD 48 × 1/6	60	22	4
38	RD 60 × 1/6	74	23	4
51	RD 70 × 1/6	84	24	5
63.5	RD 85 × 1/6	100	28	5
76	RD 98 × 1/6	114	30	6
104	RD 125 × 1/4	138	31	5

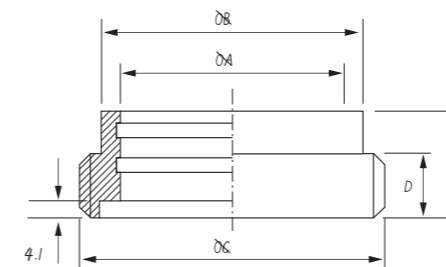
SMS 膨胀接头 14R



SMS Expanding Liner 14R

Size	A	B	C	D	E	F
25	35.5	32.0	25.8	25.2	17	3.5
32	43.5	40.0	33.0	32.2	17	3.5
38	55.0	47.9	38.8	38.2	20	4.0
40	55.0	48.0	41.2	40.2	20	4.0
51	65.0	60.4	51.8	51.2	20	4.0
63	80.0	73.5	64.3	63.7	25	4.0
76	93.0	86.5	77.0	76.2	30	5.0
101.6	118.0	112.5	102.6	101.8	27	6.0
104	118.0	112.5	105.0	104.2	27	6.0

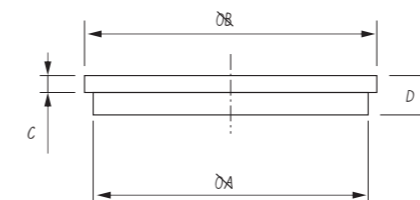
SMS 膨胀云头 15 R



SMS Expanding Male 15R

Size	A	B	C	D	E
25	25.2	32.0	RD 40 × 1/6	11	20
32	32.2	40.0	RD 48 × 1/6	13	20
38	38.2	47.9	RD 60 × 1/6	15	23
40	40.2	48.0	RD 60 × 1/6	15	23
51	51.2	60.4	RD 70 × 1/6	16	25
63	63.7	73.5	RD 85 × 1/6	19	30
76	76.2	86.5	RD 98 × 1/6	19	35
101.6	101.8	112.5	RD 125 × 1/4	20	30
104	104.2	112.5	RD 125 × 1/4	20	30

SMS 堵头



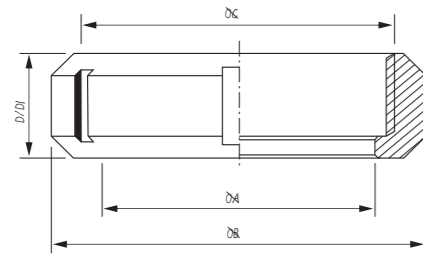
SMS Blanks

Size	A	B	C	D
25	32.0	35.5	3.5	7.5
38	48.0	55.0	5.0	9.0
51	60.0	65.0	5.0	10.0
63.5	73.5	80.0	5.0	10.0
76	86.5	93.0	5.0	11.0
101.6	112.0	118.0	6.0	11.0
104	112.0	118.0	6.0	11.0

SMS WELDING UNIONS(mm)

SMS 焊接活接头

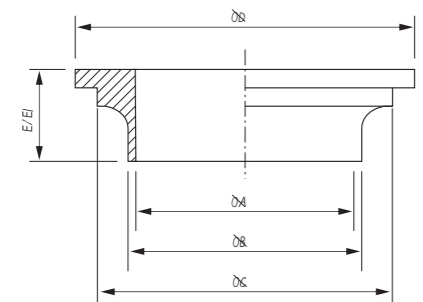
SMS 6槽螺母 SMS-13R



SMS Nut 6 Slots SMS-13R

Size	A	B	C	D	D1
25	32.8	51	RD 40 × 1/6	19	19
38	48	74	RD 60 × 1/6	23	21
51	60.5	84	RD 70 × 1/6	24	21
63.5	74	100	RD 85 × 1/6	28	24
76	87	114	RD 98 × 1/6	30	24
101.6	117	138	RD 132 × 1/6	31	27

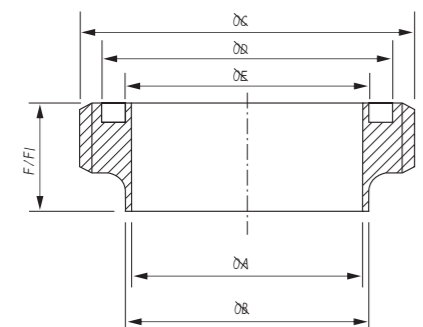
焊接接头 SMS 14G



Welding Liner SMS14G

Size	A	B	C	D	E	E1
25	22.1	25.4	32.3	35.5	15	16
38	34.8	38.1	39.5	55	20	16
51	48.5	50.8	59.7	65	20	16
63.5	60.5	63.5	73.2	80	24	16
76	72.9	76.2	86	93	24	17
101.6	97.4	101.6	116	118	30	18

焊接云头 SMS15G



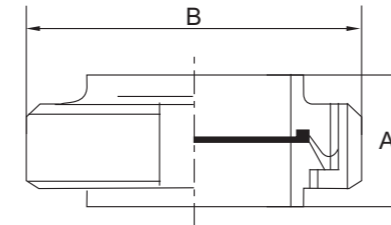
Welding Male SMS15G

Size	A	B	C	F	D	E	F1
25	22.1	25.4	RD 40 × 1/6	19	32	24.9	19
38	34.8	38.1	RD 60 × 1/6	23	48	37.9	21
51	48.5	50.8	RD 70 × 1/6	23	61	50.9	21
63.5	60.5	63.5	RD 85 × 1/6	27	73.5	63.4	24
76	72.9	76.1	RD 98 × 1/6	27	86	75.9	24
101.6	97.4	101.6	RD 132 × 1/6	30	116	103.9	28

DIN STANDARD SCREWED PIPELINE FITTING

DIN标准螺纹式管道配件

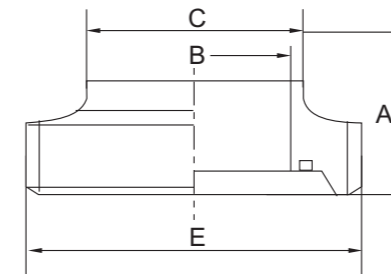
焊接螺纹组件(短型)



Union Weld Short

DIN		
10	25.5	36
15	25.5	42
20	27.5	52
25	33.5	61
32	33.5	68
40	33.5	76
50	33.5	96
65	36.5	109
80	40.5	125
100	42.5	148
125	46.5	175
150	54	207

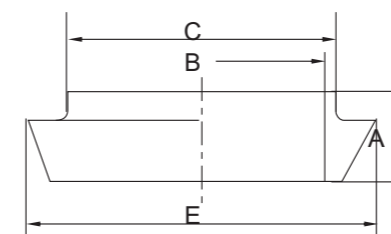
焊式螺纹接头(短型)



Male Welding Short

DIN			C	E
10	17	9	12	28x1/8"
15	17	15	18	34x1/8"
20	19	19	22	44x1/6"
25	22	25	28	52x1/6"
32	22	31	34	58x1/6"
40	22	37	40	65x1/6"
50	23	49	52	78x1/6"
65	25	66	70	95x1/6"
80	27	81	85	110x1/4"
100	30	100	104	130x1/4"
125	31.5	125	129	160x1/4"
150	35	150	154	190x1/4"

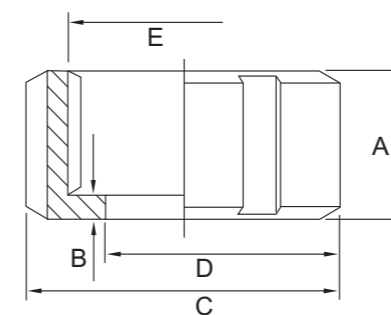
焊式平接头(短型)



Liner Welding Short

DIN			C	E
10	11	9	12	22
15	11	15	18	28
20	13	19	22	36
25	17	25	28	44
32	17	31	34	50
40	17	37	40	56
50	17	49	52	68
65	18	66	70	86
80	20	81	85	100
100	20	100	104	121
125	23.5	125	129	150
150	27	150	154	176

圆螺母



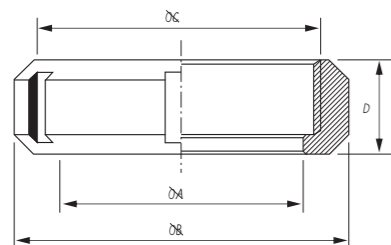
Nut

DIN	D		C
10	19	18	2.7
15	25	18	2.7
20	31	20	2.7
25	36	21	3
32	42	21	3.5
40	49	21	3.5
50	62	22	3.5
65	80	25	4
80	94	29	4
100	115	30	4
125	138	30	4
150	164	30	4

SMS WELDING UNIONS(mm)

SMS 焊接活接头

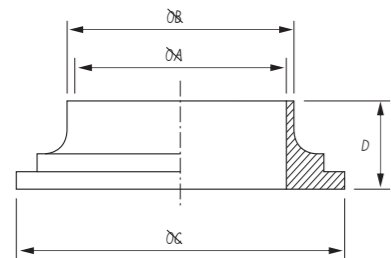
SMS 6 槽螺母 SMS-13R



SMS Nut 6 Slots SMS-13R

Size				
25	32.8	51	RD 40 × 1/6	19
32	40	60	RD 48 × 1/6	22
38	48	74	RD 60 × 1/6	23
51	60.5	84	RD 70 × 1/6	24
63.5	74	100	RD 85 × 1/6	28
76	87	114	RD 98 × 1/6	30
101.6	112	138	RD 125 × 1/4	31
104	112	138	RD 125 × 1/4	31
104-B	117	150	RD 132 × 1/6	31

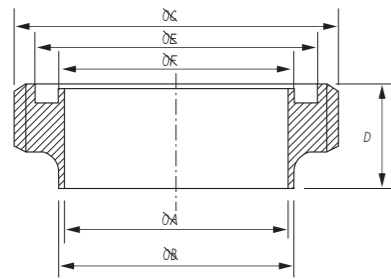
焊接长接头 SMS-14



SMS Long Welding Liner SMS-14

Size				
25	22.1	25.4	35.5	15.5
38	34.8	38.1	55.0	16
51	48.5	50.8	65.0	17
63	60.5	63.5	80.0	17
76	72.9	76.2	93.0	19
101.6	97.4	101.6	118.0	19
104	99.8	104	118.0	19
104-B	98.3	102.5	127.0	19

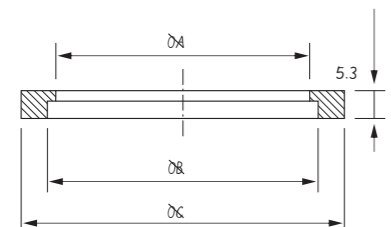
SMS 焊接云头 SMS-15



SMS Lone Welding Male SMS-15

Size						
25	22.1	25.4	RD 40 × 1/6	19	32	24.9
38	34.8	38.1	RD 60 × 1/6	23	48	37.9
51	48.5	50.8	RD 70 × 1/6	23	61	50.9
63.5	60.5	63.5	RD 85 × 1/6	27	73.5	63.4
76	72.9	76.2	RD 98 × 1/6	27	86	75.9
101.6	97.9	101.6	RD 125 × 1/4	30	116	103.9
104	99.8	104.0	RD 125 × 1/4	30	116	103.9

L型密封环(EPDM, SILICON)



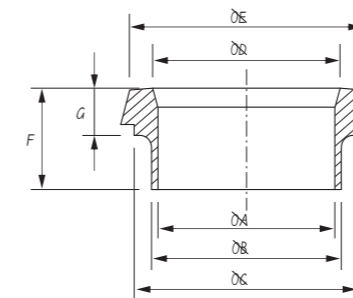
Seal Ring L Type (EPDM, SILICON)

Size			
25	22.8	25.1	31.8
38	35.8	38.1	47.8
51	48.8	51.1	60.8
63.5	61.0	63.6	73.3
76	73.4	76.1	85.8
104	100.5	104.0	115.7

DIN UNIONS IMPERIAL (mm)

DIN 活接头

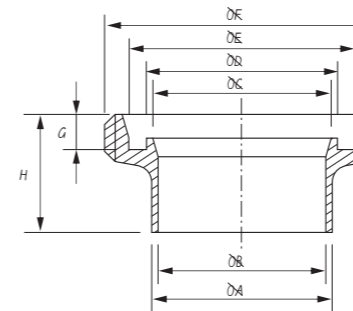
DIN 焊接接头



DIN Imperial Welding Liner

Size	A	B	C	D	E	F	G
1.0 "	22.1	25.4	35.0	26.0	44	22	13
1.5 "	34.8	38.1	48.0	38.0	56	26	13
2.0 "	47.5	50.8	61.0	50.0	68	28	14
2.5 "	60.2	63.5	79.0	66.0	86	32	16
3.0 "	72.9	76.2	93.0	81.0	100	37	19
4.0 "	97.6	101.6	114.0	100.0	121	44	19

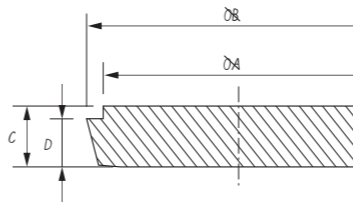
DIN 焊接云头



DIN Imperial Welding Male

Size	A	B	D	E	F		
1.0 "	25.4	22.1	26.0	30	40	RD 52 × 1/6	7 29
1.5 "	38.1	34.8	38.0	42	52	RD 65 × 1/6	7
2.0 "	50.8	47.5	50.0	54	61	RD 78 × 1/6	7 35
2.5 "	63.5	60.2	66.0	71	81	RD 95 × 1/6	8
3.0 "	76.2	72.9	81.0	86	96	RD 110 × 1/4	8 45
4.0 "	101.6	97.6	100.0	105	115	RD 130 × 1/4	10

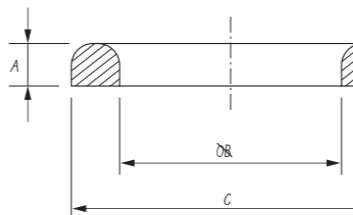
DIN 接头



DIN Blanks

DIN	A	B	C	D	DIN	A	B	C	D
10	18	22.5	9	6	50	61	68.5	14	11
15	24	28.5	9	6	65	79	86	16	12
20	30	36.5	11	8	80	93	100	16	12
25	35	44	13	10	100	114	121	20	15
32	41	50	13	10	125	137	150	22	17
40	48	56	13	10	150	163	176	24	18

DIN 密封环(EPDM)



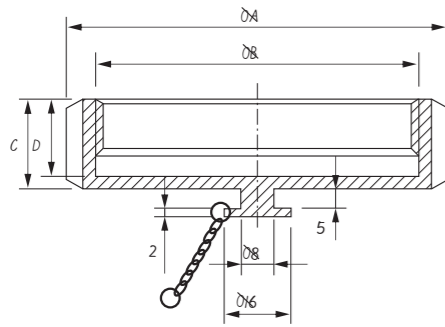
DIN Seal Ring (EPDM)

DIN	A	B	C	DIN	A	B	C
20	4.5	23	33	50	5	54	64
25	5	30	40	65	5	71	81
32	5	36	46	80	5	85	95
40	5	42	52	100	5	104	114

DIN 11851 EXPANDING UNIONS(mm)

DIN 11851 膨胀活接头

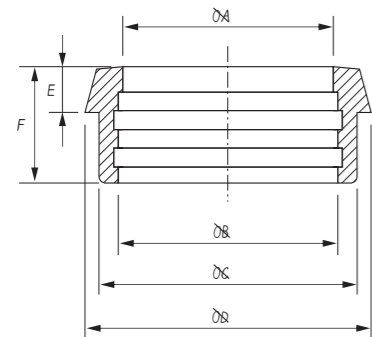
DIN 盲盖螺母13RBN



DIN Blank Nut DIN-13RBN

DIN	A	B	C	D
10	38	RD 28 × 1/8	18	15
15	44	RD 34 × 1/8	18	15
20	54	RD 44 × 1/6	21	18
25	63	RD 52 × 1/6	21	18
32	70	RD 58 × 1/6	21	18
40	78	RD 65 × 1/6	21	18
50	92	RD 78 × 1/6	22	19
65	112	RD 95 × 1/6	25	21
80	127	RD 110 × 1/4	30	26
90	138	RD 120 × 1/4	30	26
100	148	RD 130 × 1/4	31	26
125	178	RD 160 × 1/4	35	30
150	210	RD 190 × 1/4	40	34

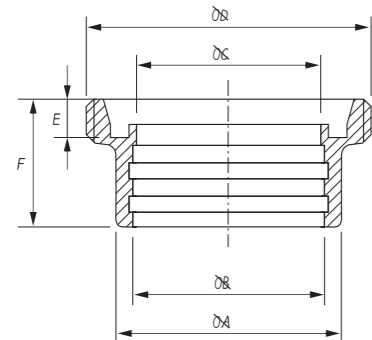
DIN 膨胀接头-14R



DIN Expanding Liner DIN-14R

DIN	A	B	C	D	E	F
10	10	12.2	18	22	6	17
15	16	18.2	24	28	6	17
20	20	22.2	30	36	8	18
25	26	28.2	35	44	10	22
32	32	34.2	41	50	10	25
40	38	40.2	48	56	10	26
50	50	52.2	61	68	11	28
65	66	70.3	79	86	12	32
80	81	85.3	93	100	12	37
100	100	104.3	114	120	15	44
125	125	129.3	137	149	17	34
150	150	154.3	163	175	18	37

DIN 膨胀云头-15R



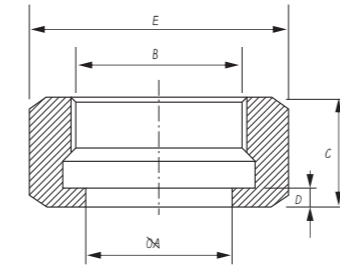
DIN Expanding Male DIN-15R

DIN	A	B	C	D	E	F
DN10	18	12.2	10	RD 28 × 1/8	4	21
DN15	24	18.2	16	RD 34 × 1/8	4	21
DN20	30	22.2	20	RD 44 × 1/6	6	24
DN25	35	28.2	26	RD 52 × 1/6	7	29
DN32	41	34.2	32	RD 58 × 1/6	7	32
DN40	48	40.2	38	RD 65 × 1/6	7	33
DN50	61	52.2	50	RD 78 × 1/6	7	35
DN65	79	70.3	66	RD 95 × 1/6	8	40
DN80	93	85.3	81	RD 110 × 1/4	8	45
DN100	114	104.3	100	RD 130 × 1/4	10	54
DN125	137	129.3	125	RD 160 × 1/4	12	46
DN150	163	154.3	150	RD 190 × 1/4	13	50

3A UNIONS (mm)

3A活接头

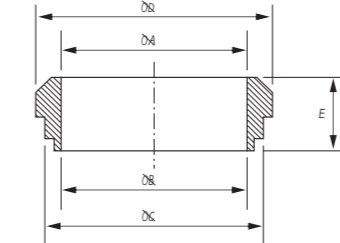
3A 六角螺帽/螺母 3A-13H



3A Hexagonal Nut 3A-13H

Size	A	B	C	D	E
1.0 "	30.3	38.02 ACME 8TPI	23	4	46
1.5 "	43.4	51.54 ACME 8TPI	24.6	5.5	61.1
2.0 "	56.5	65.05 ACME 8TPI	27	5.5	76.2
2.5 "	69.6	78.56 ACME 8TPI	29.6	5.5	91.3
3.0 "	82.7	92.08 ACME 8TPI	32.5	6.4	106.4
4.0 "	108.9	120.14 ACME 6TPI	38.1	6.4	137.6

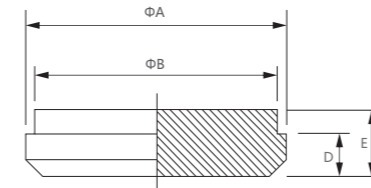
3A短斜座焊接接头 3A-14PRF



3A Short Bevel Seat Weld Liner 3A-14PRF

Size	A	B	C	D	E
1.0 "	22.1	25.4	29.5	33.3	18.3
1.5 "	34.8	38.1	42.6	46.8	18.3
2.0 "	47.5	50.8	55.7	60.3	19.1
2.5 "	60.2	63.5	68.8	73.8	22.3
3.0 "	72.9	76.2	81.9	87.3	23.1
4.0 "	97.6	101.6	108.1	114.3	26.2

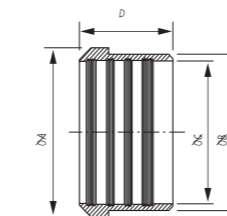
3A-16A



3A-16A

Size	A	B	D	E
1.0 "	33.3	29.5	7.9	11.9
1.5 "	46.8	42.6	8.7	14.3
2.0 "	60.3	55.7	10.3	15.9
2.5 "	73.8	68.8	11.1	16.7
3.0 "	87.3	81.9	11.9	18.3
4.0 "	114.3	108.1	14.3	20.6

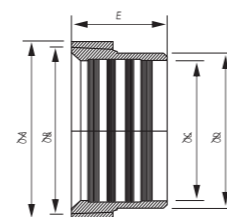
3A胀式接头



3A Recessless Liner

Size	A	B	C	D
301440 1.0 "	33.3	29.5	25.5	19.1
301441 1.5 "	46.8	42.6	38.2	28.6
301442 2.0 "	60.3	55.7	50.9	33.3
301443 2.5 "	73.8	68.8	63.6	34.9
301444 3.0 "	87.3	81.9	76.3	36.5
301445 4.0 "	114.3	108.1	101.7	38.1

3A胀式云头

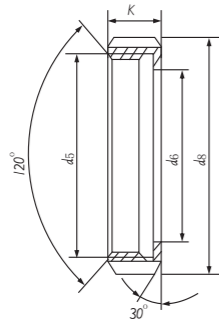


3A Recessless Lame

Size	A	B	C	D	E
301450 1.0 "	37.13 ACME 8TPI	33.4	25.5	29.5	20.6
301451 1.5 "	50.65 ACME 8TPI	46.96	38.2	42.6	28.6
301452 2.0 "	54.17 ACME 8TPI	60.48	50.9	55.7	34.9
301453 2.5 "	77.67 ACME 8TPI	73.99	63.6	68.8	38.1
301454 3.0 "	91.19 ACME 8TPI	87.5	76.3	81.9	41.3
301455 4.0 "	119.25 ACME 8TPI	114.53	101.7	108.1	41.3

DIN 11851 UNIONS(mm) DIN 11851活接头

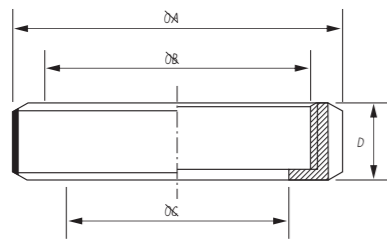
DIN 圆螺母



DIN Round Nut

DIN	d5	d6	d8	K
10	RD 28 × 1/8	19	38	18
15	RD 34 × 1/8	25	44	18
20	RD 44 × 1/6	31	54	20
25	RD 52 × 1/6	36	63	21
32	RD 58 × 1/6	42	70	21
40	RD 65 × 1/6	49	78	21
50	RD 78 × 1/6	62	92	22
65	RD 95 × 1/6	80	112	25
80	RD 110 × 1/4	94	127	19
100	RD 130 × 1/4	115	148	31
125	RD 160 × 1/4	138	178	35
150	RD 190 × 1/4	164	210	40

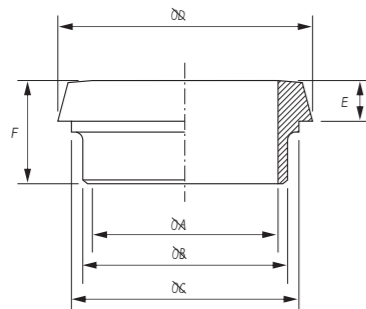
DIN 圆螺母-13R



DIN Round Nut -13R

DIN	A	B	C	D	Siots
10	38	RD 28 × 1/8	19	18	4
15	44	RD 34 × 1/8	25	18	4
20	54	RD 44 × 1/6	31	21	4
25	63	RD 52 × 1/6	36	21	4
32	70	RD 58 × 1/6	42	21	4
40	78	RD 65 × 1/6	49	21	4
50	92	RD 78 × 1/6	62	22	4
65	112	RD 95 × 1/6	80	25	6
80	127	RD 110 × 1/4	94	30	6
90	138	RD 120 × 1/4	104	30	6
100	148	RD 130 × 1/4	115	31	6
125	178	RD 160 × 1/4	138	35	6
150	210	RD 190 × 1/4	164	40	6

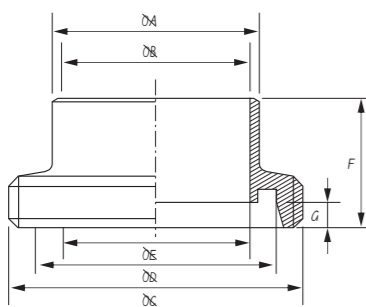
DIN 焊接接头-14



DIN Welding Liner-14

DIN	A	B	C	D	E	F
10	10	15	18	22	6	17
15	16	21	24	28	6	17
20	20	25	30	36	8	18
25	26	31	35	44	10	22
32	32	37	41	50	10	25
40	38	43	48	56	10	26
50	50	55	61	68	11	28
65	66	72	79	86	12	32
80	81	87	93	100	12	37
90	89	95	103	111	15	35
100	100	106	114	121	15	44
125	125	132	137	150	17	34
150	150	157	163	176	18	37

DIN 焊接云头 -15



DIN Welding Male-15

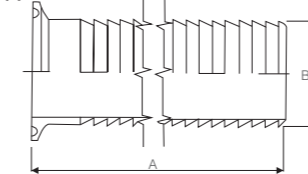
DIN	A	B	C	D	E	F	G
DN10	15	10	RD 28 × 1/8	20	12	21	4
DN15	21	16	RD 34 × 1/8	26	18	21	4
DN20	25	20	RD 44 × 1/6	33	23	24	6
DN25	31	26	RD 52 × 1/6	40	30	29	7
DN32	37	32	RD 58 × 1/6	46	36	32	7
DN40	43	38	RD 65 × 1/6	52	42	33	7
DN50	55	50	RD 78 × 1/6	64	54	35	7
DN65	72	66	RD 95 × 1/6	81	71	40	8
DN80	87	81	RD 110 × 1/4	95	85	45	8
DN90	95	89	RD 120 × 1/4	114	104	45	10
DN100	106	100	RD 130 × 1/4	114	104	54	10
DN125	132	125	RD 160 × 1/4	142	130	46	12
DN150	157	150	RD 190 × 1/4	167	155	50	13

3A FERRULE ADAPTER (mm) 卡箍接头

23BMP 温度计帽 23BMP Thermometer Cap				
Size	A	B	NPT	L
1.0"	25.4	50.5	1/2"-14	15.8
1.5"	38.1	50.5	3/4"-14	15.8
2.0"	50.8	64.0	3/4"-14	15.8
2.5"	63.5	77.5	3/4"-14	15.8
3.0"	76.2	91.0	3/4"-14	15.8
4.0"	101.6	119.0	3/4"-14	15.8

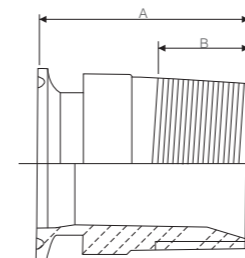
B19W 接头 B19W Adapter					
Size	O. D	I. D	A	B	NPT
1.0"	25.4	22.1	44.5	33.4	1.0"-11.5
1.5"	38.1	34.8	44.5	48.3	1.5"-11.5
2.0"	50.8	47.5	46	60.3	2.0"-11.5
2.5"	63.5	60.2	58.7	73.0	2.5"-8
3.0"	76.2	72.9	63.5	88.9	3.0"-8
4.0"	101.6	97.4	65.1	114.3	4.0"-8
6.0"	152.4	146.9	76.2	168.3	6.0"-8

14MP 皮管接头



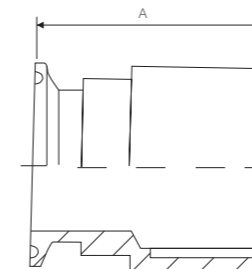
14MPHRL brewery hose barb		
Size	A	B
1"	88.90	25.40
1-1/2"	127.00	38.10
2"	127.00	50.80
2-1/2"	139.70	63.50
3"	139.70	76.20
4"	139.70	101.60

21MP 皮管接头



21MP Male adapter npt		
SIZE	A	B
FERRULExNPT	41.30	14.70
1/2"x1/2"	45.40	17.50
3/4"x3/4"	57.15	22.86
1"x1"	57.00	22.86
1-1/2"x1	57.15	24.13
1-1/2"x1-1/2"	57.15	24.13
2"x1-1/2"	67.00	24.13
2"x2"	67.00	24.13
2-1/2"x1-1/2"	73.03	34.93
3"x3"	77.89	36.32
4"x4"	80.14	38.86

22MP 皮管接头

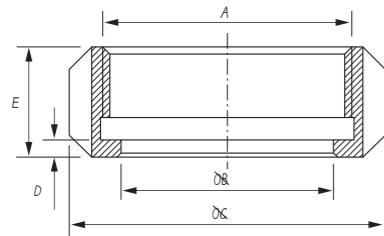


22MP Female adapter npt	
Size	A
FERRULExNPT	
1/2"x1/2"	41.30
3/4"x3/4"	45.40
1"x1"	50.80
1-1/2"x1"	50.80
1-1/2"x1-1/2"	57.15
2"x1-1/2"	57.15
2"x2"	60.33
2-1/2"x1-1/2"	72.39
3"x3"	73.66
4"x4"	76.20

3A FERRULE ADAPTER(mm)

卡箍接头

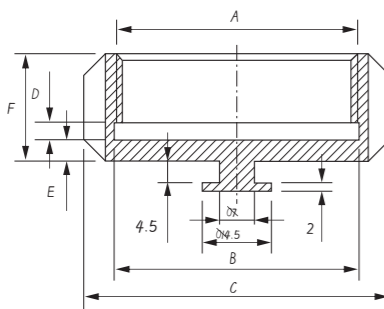
多槽螺母 M-13R



Mancon Nut Slots M-13R

Size	A	B	C	D	E
DN33	39 × 11TPI WHIT	37	50	4	25
DN43	M55 × P3.0	47	70	4	25
DN53	M67 × P3.0	57	80	4	25
DN63	M79 × P3.5	67	95	4	25
DN73	M90 × P3.5	77	106	4	25
DN83	M102 × P4.0	90	118	4	25
DN103	M125 × P4.0	112	139	4	26

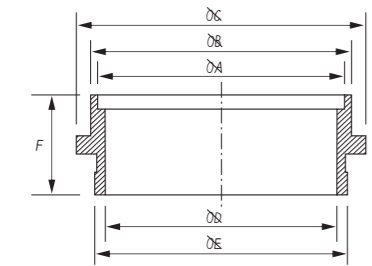
4槽空白螺母 M-13B



Mancon Blank Nut 4 Slots M-13B

Size	A	B	C	D	E	F	G	H
DN33	39 × 11TPI WHIT	42	50	5	4	25	43	6
DN43	M55 × P3.0	56	70	5	4	25	62	8
DN53	M67 × P3.0	68	80	5	4	25	72	8
DN63	M79 × P3.5	80	95	5	4	25	87	8
DN73	M90 × P3.5	91	106	5	4	25	98	10
DN83	M102 × P4.0	103	118	5	4	25	110	10
DN103	M125 × P4.0	126	139	5	4	26	132	10

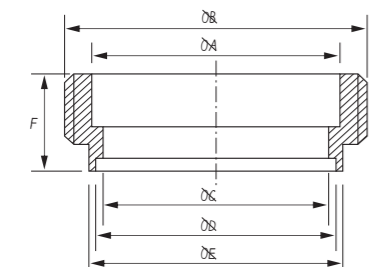
接头 M-14



Mancon Liner M-14

Size	A	B	C	D	E	F
DN33	33.3	36	38	28	31.5	22
DN38	38.2	46	50	35.9	44.5	29
DN40/43	43.3	46.3	50	40	44.5	22
DN50/53	53.3	56.3	62.5	50	54.5	22
DN51	51.2	56	62.5	48.5	54.5	29
DN60/63	63.3	66.3	73.5	60	64.5	22
DN70/73	73.3	76.3	85	70	74.5	22
DN76	72	76	85	70	74.5	22
DN80/83	83.3	86.3	96	80	84.5	22
DN103	104.2	108	119	100	104.5	22

云头M-15

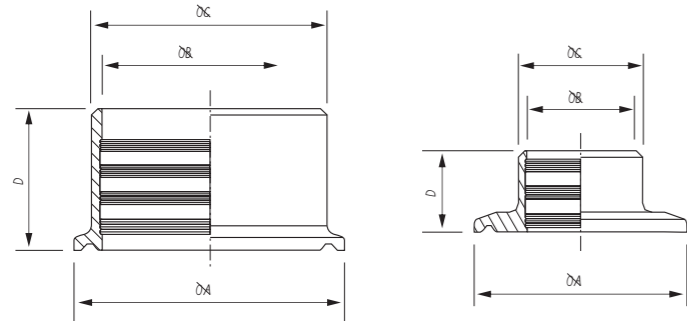


Mancon Male M-15

Size	A	B	C	D	E	F
DN33	32	40.5 × 11TPI WHIT	30	33.3	36.3	22
DN38	45	M55 × P3.0	35.9	38.2	46	30
DN43	45	M55 × P3.0	40	43.3	46.3	22
DN51	55	M67 × P3.0	48.5	51.2	56	30
DN53	55	M67 × P3.0	50	53.3	56.3	22
DN63	66	M79 × P3.5	60	63.3	66.3	22
DN73	76	M90 × P3.5	70	73.3	76.3	22
DN76	76	M90 × P				

3A FERRULE ADAPTER(mm)

卡箍接头



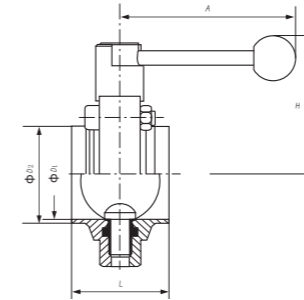
3A-胀管接头

SIZE	A	B	C	D
1.0"	50.5	25.5	29.5	19.1
1.5"	50.5	38.2	42.6	28.6
2.0"	64	50.9	55.7	33.3
2.5"	77.5	63.6	68.8	34.9
3.0"	91	76.3	91.9	36.5
4.0"	119	101.7	108.1	38.1

ISO Standard Sanitary Butterfly Valve

ISO标准卫生级蝶阀

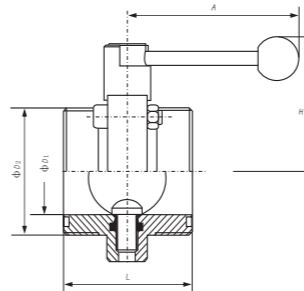
ISO 焊接型蝶阀



ISO Welded Butterfly Valve

规格	D1	D2	A	H	L
1 ^s	22.4	25.4	126	76	52
1.5 ^s	35.1	38.1	126	76	52
2 ^s	47.8	50.8	126	86.5	52
2.5 ^s	59.5	63.5	126	93.5	60
3 ^s	72.2	76.2	155	104	60
4 ^s	97.6	101.6	155	120	60

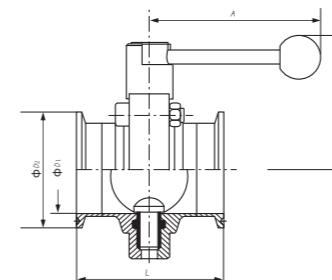
ISO 螺纹型蝶阀



ISO Threaded Butterfly Valve

规格	D1	D2	A	H	L
1 ^s	22.4	Rd40 x 1/6"	126	76	66
1.5 ^s	35.1	Rd60 x 1/6"	126	79	70
2 ^s	47.8	Rd70 x 1/6"	126	86.5	76
2.5 ^s	59.5	Rd85 x 1/6"	126	94	76
3 ^s	72.2	Rd98 x 1/6"	155	104	80
4 ^s	97.6	Rd125 x 1/6"	155	120	80
4.5 ^s	97.6	Rd132 x 1/6"	157	120	80

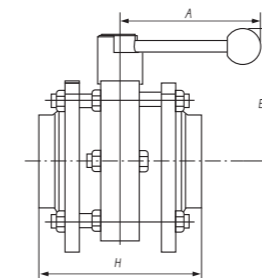
ISO 快装型蝶阀



ISO Quick-installation Butterfly Valves

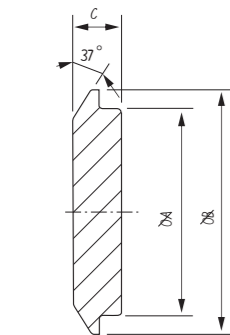
规格	D1	D2	A	H	L
1 ^s	22.4	50.5	126	76	66
1.5 ^s	35.1	50.5	126	76	66
2 ^s	47.8	64	126	86.5	68
2.5 ^s	59.5	77.5	126	94	76
3 ^s	72.2	91	155	104	76
4 ^s	97.6	119	155	120	80

(法兰型)用于ISO 标准管路



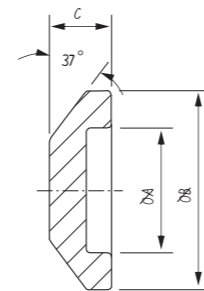
(Flange type) For ISO Standard Pipeline

ISO	H	E	A
25.4	92	76	126
38.1	94	76	126
58	100	86.5	126
63.5	102	94	126
76.1	102	104	155
101.6	104	120	155



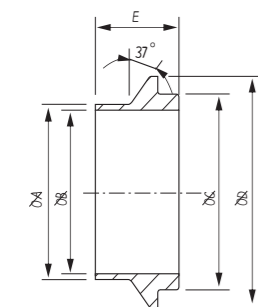
14WI -CAP

SIZE	A	B	C
1.0"	31.5	50.67	9.7
1.5"	44.2	50.67	9.7
2.0"	56.9	67.05	11.77
2.5"	69.6	84.00	15.52
3.0"	83.82	98.30	16.12
4.0"	109.14	123.70	16.12



15WI -CAP

SIZE	A	B	C
1.0"	31.88	50.67	12.75
1.5"	44.58	50.67	12.75
2.0"	57.28	67.05	17.66
2.5"	69.98	84.00	18.37
3.0"	84.20	98.30	19.39
4.0"	109.60	123.70	19.37



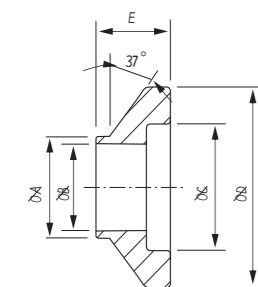
14WI I

SIZE	A	B	C	D	E
1.0"	25.65	22.10	31.50	50.67	19.84
1.5"	38.35	34.80	44.20	50.67	23.80
2.0"	51.05	47.50	56.90	67.05	26.19
2.5"	63.75	60.20	69.60	84.00	29.36
3.0"	76.45	72.89	83.82	98.30	30.94
4.0"	101.85	97.38	109.14	123.70	34.11



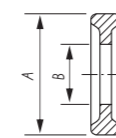
法兰型 13FG Flange Type 13FG

SIZE	A	B
1.0"	22.8	52.7
1.5"	35.8	52.7
2.0"	48.8	66.2
2.5"	60.5	79.7
3.0"	73.1	93.2
4.0"	97.8	121.2
6.0"	148	169.1
10"	270.7	249
12"	300	321.5



15WI I

SIZE	A	B	C	D	E
1.0"	25.65	22.10	31.88	50.67	19.84
1.5"	38.35	34.80	44.58	50.67	23.80
2.0"	51.05	47.50	57.28	67.05	26.19
2.5"	63.75	60.20	69.98	84.00	29.36
3.0"	76.45	72.89	84.20	98.30	30.94
4.0"	101.85	97.38	109.60	123.70	34.11



普通式 13PG Plain Type 13PG

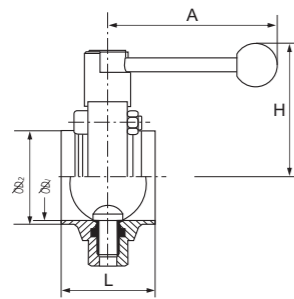
SIZE	A	B
1/2"	21.8	9.9
3/4"	21.8	16.3
1.0"	50.0	22.7
1.5"	50.0	35.9
2.0"	63.5	48.6
2.5"	76.2	61.3
3.0"	88.9	74.0
4.0"	118	98.6
6.0"	165	147.8
8.0"	216	196.6

用于卡箍的垫圈: 三元乙丙橡胶, 硅橡胶, 氟橡胶, 聚四氟乙烯
Gasket For Ferrule: EPDM, SILICON, VITON, PTFE

DIN Standard Sanitary Butterfly Valve

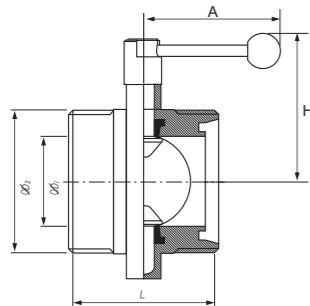
DIN标准卫生级蝶阀

DIN 焊接型蝶阀



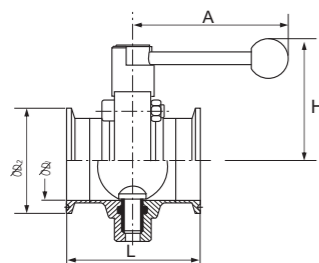
DIN Side Welded Butterfly Valve					
规格	D1	D2	A	H	L
25	25	28	126	76	52
32	31	34	126	80	52
40	37	40	126	82	52
50	49	52	126	89	52
65	66	70	155	99	58
80	81	85	155	106	60
100	100	104	155	115	60
125	125	129	195	130	74
150	150	154	195	143	78
200	200	207	295	335	94

DIN 螺纹型蝶阀



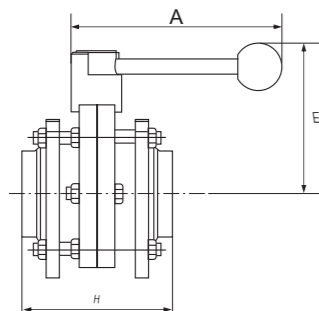
DIN Threaded Butterfly Valve					
规格	D1	D2	A	H	L
25	25	Rd52×1/6"	126	76	66
32	31	Rd58×1/6"	126	80	66
40	37	Rd65×1/6"	126	82	75
50	49	Rd78×1/6"	126	89	76
65	66	Rd95×1/6"	155	99	80
80	81	Rd110×1/4"	155	106	80
100	100	Rd130×1/4"	155	115	84
125	125	Rd160×1/4"	195	130	90/137
150	150	Rd190×1/4"	195	143	95/148

DIN 快装型蝶阀



DIN Quick Installation Butterfly Valve					
规格	D1	D2	A	H	L
25	25	50.5	126	76	66
32	31	50.5	126	80	66
40	37	50.5	126	82	70
50	49	64	126	89	76
65	66	91	155	99	80
80	81	106	155	106	80
100	100	119	155	115	84
125	125	155	195	130	95/116
150	150	183	195	143	99/120

(法兰型)用于DIN标准管路

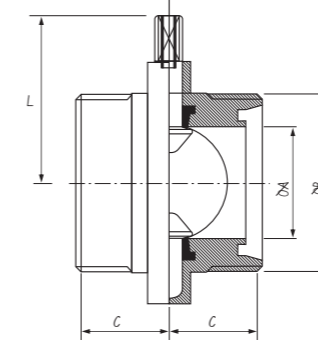


(Flange Type) For DIN Standard Pipeline			
规格	H	E	A
25	92	76	126
32	92	80	126
40	94	88	126
50	100	89	126
65	102	99	126
80	102	106	155
100	104	115	155
125	118	130	195
150	124	140	195

DIN SANITARY BUTTERFLY VALVE

DIN 卫生级蝶阀

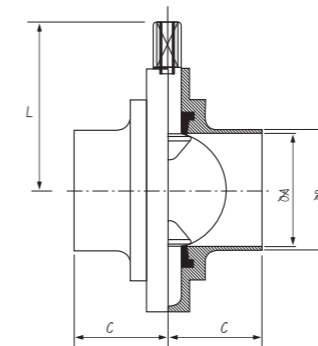
DIN 螺纹蝶阀



DIN Male Butterfly Valves

Size	A	B	C	L
DN28	26	51.3-RD52×1/6	33	54.5
DN34	32	57.3-RD58×1/6	33	58.5
DN40	38	64.3-RD65×1/6	37.5	60.5
DN52	50	77.3-RD78×1/6	38	69
DN70	66	94.3-RD95×1/6	40	78.5
DN85	81	109-RD110×1/4	40	85.5
DN104	100	129-RD130×1/4	42	93.5

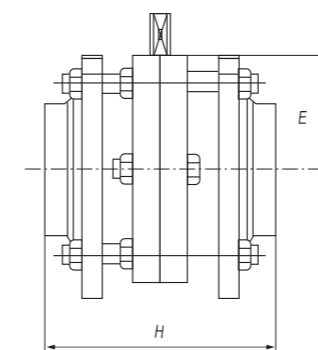
DIN 焊接蝶阀



DIN Welded Butterfly Valves

Size	A	B	C	L
DN28	25	28	34	54.5
DN34	31	34	34	58.5
DN40	37	40	38	60.5
DN52	49	52	40	69
DN70	66	70	40	78.5
DN85	81	85	41	85.5
DN104	100	104	44	93.5

(法兰型)用于DIN标准管路



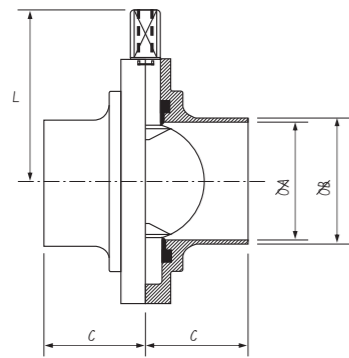
(Flange Type) For DIN Standard Pipeline

DIN	H	E	A
25	92	34.5	38.5
32	92	38.5	42.5
40	94	40.5	44.5
50	100	49.5	53
65	102	59.5	62.5
80	102	66.5	69.5
100	104	74.5	77.5
125	118	91	94
150	124	104	107

SMS/BS SANITARY BUTTERFLY VALVE

SMS/BS 卫生级蝶阀

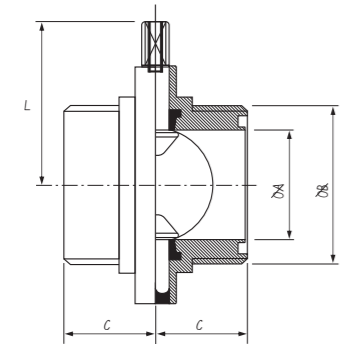
SMS焊接蝶阀



SMS Welded Butterfly Valves

Size	A	B	C	L
1.0 "	22.4	25	34	54.5
1.5 "	35.1	38	38	58.5
2.0 "	48	51	40	66
2.5 "	60.2	63.5	40	73
3.0 "	72.1	76.2	41	80
4.0 "	97.4	101.6	44	93.5

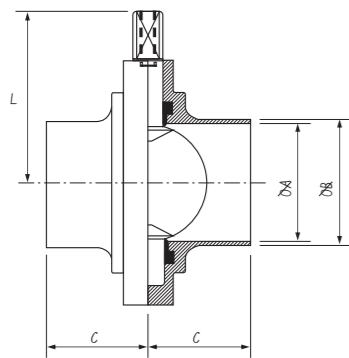
SMS 外螺蝶阀



SMS Male Butterfly Valves

Size	A	B	C	L
1.0 "	22.4	RD40 × 1/6	33	54.5
1.5 "	35.1	RD60 × 1/6	35	58.5
2.0 "	48	RD70 × 1/6	38	66
2.5 "	60.2	RD85 × 1/6	38	73
3.0 "	72.1	RD98 × 1/6	40	80
4.0 "	100	RD125 × 1/4	40	93.5

BS焊接蝶阀



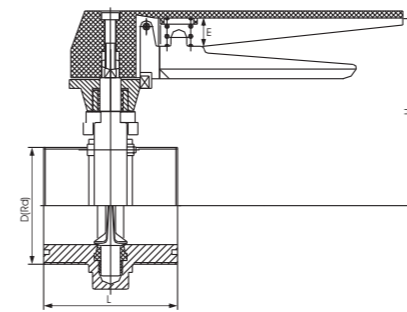
BS Welded Butterfly Valves

Size	A	B	C	L
1.0 "	22.1	25.4	35	54.5
1.5 "	34.8	38.1	38	58.5
2.0 "	47.5	50.8	38	66
2.5 "	60.2	63.5	40	73
3.0 "	72.2	76.2	40	80
4.0 "	97.6	101.6	40	93.5

SMS SANITARY BUTTERFLY VALVE

SMS 卫生级蝶阀

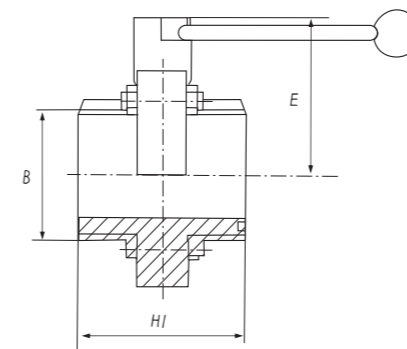
12定位手柄螺纹蝶阀



12 Positioned Handle Threaded Butterfly Valve

Size	L	D	H	E
1"	66	40 × 1/6 "	127	125
1.5"	70	60 × 1/6 "	129	125
2"	76	70 × 1/6 "	150	125
2.5"	80	85 × 1/6 "	164	125
3"	80	98 × 1/6 "	178	135
4"	80	125 × 1/6 "	205	135

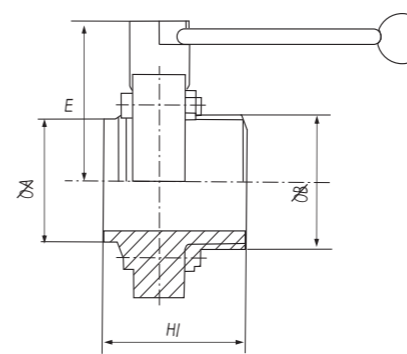
SMS螺纹蝶阀



SMS Thread Butterfly Valves

Size	B	E	H1
1"	40 × 1/6	76	66
1.25"	48 × 1/6	76	66
1.5"	60 × 1/6	79	70
2"	70 × 1/6	86.5	76
2.5"	85 × 1/6	94	80
3"	98 × 1/6	104	80
4"	125 × 1/6	120	80

SMS(一边焊接, 一边螺纹)蝶阀



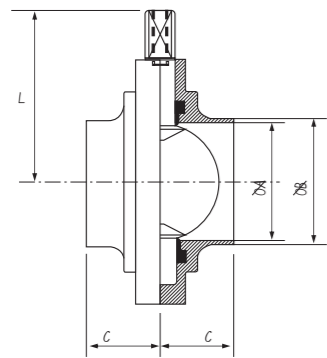
SMS (one side welded, the other side screw threaded) Butterfly Valves

Size	E	A	B	H1
1"	76	25.4 × 1.5	40 × 1/6	56.5
1.25"	76	31.8 × 1.5	48 × 1/6	56.5
1.5"	79	38.1 × 1.5	60 × 1/6	58.5
2"	86.5	50.8 × 1.5	70 × 1/6	64
2.5"	94	63.5 × 2	85 × 1/6	67
3"	104	76.1 × 2	98 × 1/6	68
4"	120	101.6 × 2	124 × 1/6	72

3A SANITARY BUTTERFLY VALVE

3A 卫生级蝶阀

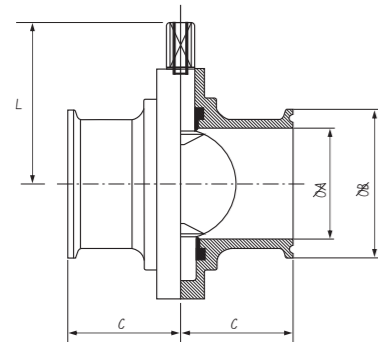
3A焊接蝶阀



3A Welded Butterfly Valves

Size	A	B	C	L
1.0 "	22.1	25.4	34	54.5
1.5 "	34.8	38.1	38	58.5
2.0 "	47.5	50.8	40	66
2.5 "	60.2	63.5	40	73
3.0 "	72.2	76.2	41	80
4.0 "	97.6	101.6	44	93.5

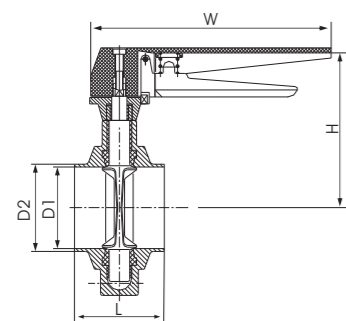
3A快装蝶阀



3A Quick-install Butterfly Valves

Size	A	B	C	L
1.0 "	22.1	50.5	44.5	54.5
1.5 "	34.8	50.5	44.5	58.5
2.0 "	47.5	64.0	47.6	66
2.5 "	60.2	77.5	48.4	73
3.0 "	72.2	91.0	51.5	80
4.0 "	97.6	119.0	51.5	93.5

12定位手柄焊接蝶阀



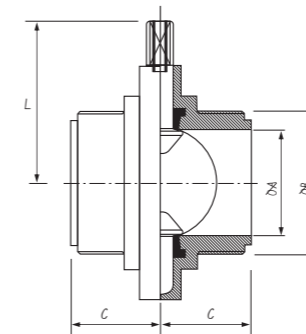
12 Positioned Handle Welded Butterfly Valve

Size	L	D1	D2	H	W
1"	52	22.1	25.4	127	125
1.5"	52	34.8	38.1	129	125
2"	52	47.5	50.8	150	125
2.5"	60	60.2	63.5	164	125
3"	60	72.9	76.2	178	135
4"	60	97.4	101.6	205	135

SANITARY BUTTERFLY VALVE

卫生级蝶阀

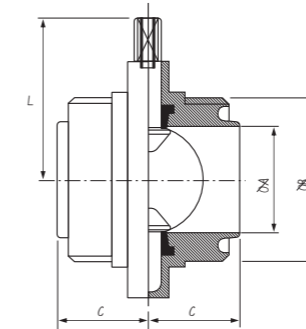
IDF 螺纹蝶阀



IDF Male Butterfly Valves

Size	A	B	C	L
1.0 "	22.5	37.13×8T ACME	33	54.5
1.5 "	35.1	50.65×8T ACME	38	58.5
2.0 "	47.8	64.16×8T ACME	40	66
2.5 "	60.5	77.67×8T ACME	40	73
3.0 "	72	91.19×8T ACME	41	80
4.0 "	97.6	125.9×6T ACME	45	93.5

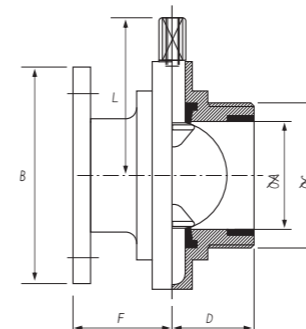
RJT 螺纹蝶阀



RJT Male Butterfly Valves

Size	A	B	C	L
1.0 "	22.1	45.72×8T WHIT	34	54.5
1.5 "	34.9	58.42×8T WHIT	38	58.5
2.0 "	47.6	72.72×6T WHIT	40	66
2.5 "	60.3	85.42×6T WHIT	40	73
3.0 "	73	98.12×6T WHIT	41	80
4.0 "	97.6	123.52×6T WHIT	50	93.5

螺纹/法兰蝶阀



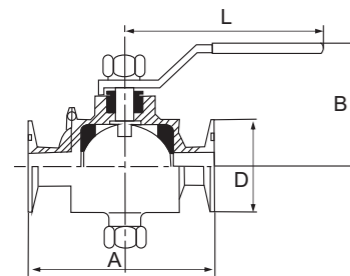
Screwed/Flanged Butterfly Valve

Size	A	C	D	F	L	B
1.0 "	22.4	37×3.0	33	37	54	85
1.5 "	35.1	55×3.0	34	37	58.5	85
2.0 "	48.1	65×4.0	35	39	66	100
2.5 "	59.5	80×4.0	37	41	73	115
3.0 "	72	93×4.0	38	42	80	128
4.0 "	97.6	125×4.0	40	44	93.5	155

SANITARY BALL VALVE

材质: 304/316L 卫生级球阀

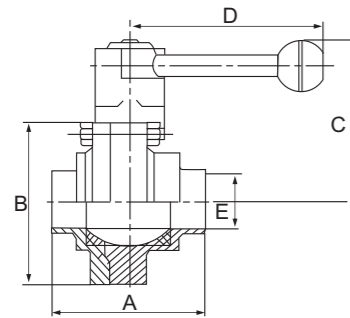
卫生级直通式快装球阀



Sanitary Grade Straight-Way Type Quick-Installment Ball Valve

SIZE	尺寸 Size (mm)		公称直径 Diameter	
	A	B	Inch	DIN
1"	120	50	50.5	
1 1/2"	140	60	50.5	
2"	170	80	64.0	
2.5"	190	90	77.5	
3"	220	95	91	

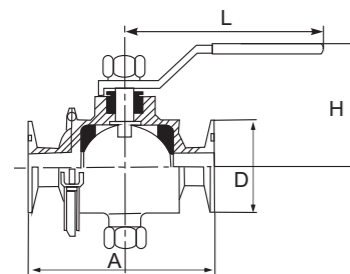
卫生级焊接式蝶形球阀



Sanitary Grade Welded Butterfly-Shaped Ball Valve

SIZE	A	B	D	L
DN19	63	130	78	84
25	68	130	78	84
32	74	130	86	88
38	89	130	106	98
51	106	140	124	107
63	120	150	139	115
76	134	150	159	125

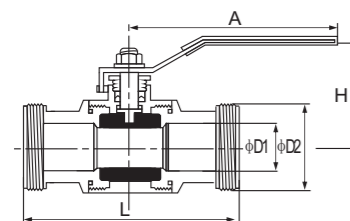
卫生级快装式三片球阀



Sanitary Grade Quick-Installation Three-Piece Ball Valve

SIZE	A	D	H	L
20	100	50.5	50	110
25	120	50.5	55	120
32	130	50.5	58	130
38	150	50.5	60	140
51	200	64	80	170
63	210	77.5	90	190
76	220	91	95	210
89	260	106	110	220
102	320	119	118	240

卫生级螺纹三通球阀



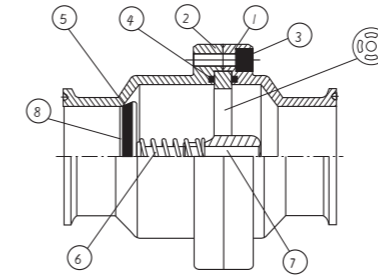
Sanitary Grade Screw Three-Way Ball Valve

SIZE	phi D1	phi D2	A	H	L
3/8S	12.7	34	98	47	85
1/2S	16	34	123	58	91
3/4S	20	50.5	124	60	108
1S	25	50.5	143	80	117
1 1/4S	32	50.5	143	85	138
1 1/2S	38	64	200	95	152
2S	50.8	64	200	105	175

SANITARY CHECK VALVE Material:304/316L

材质: 304/316L 卫生级止回阀

止回阀

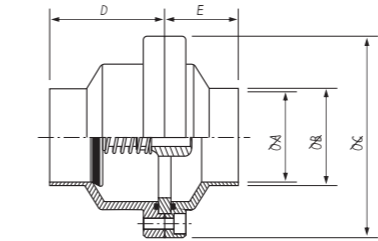


Check Valve

NO.	Name	NO.	Name
1	Short body	5	Seal-ring
2	Long body	6	ST. ST Spring
3	ST. ST Screw	7	Flow support plate
4	O-ring	8	Disc

注: 阀体与阀盖联接用卡箍可铸造和冲压2种

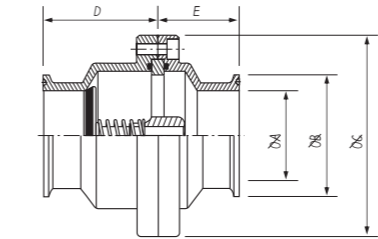
ISO 焊接止回阀



ISO Welded Check Valve

Size	A	B	C	D	E
1.0"	22.4	25.4	90	47	31
1.5"	35.1	38.1	90	49	32
2.0"	47.8	50.8	106	58	35
2.5"	59.5	63.5	123	58	35
3.0"	72.2	76.2	136	62	36
3.5"	84.9	88.9	150	62	36
4.0"	97.8	101.6	165	65	36

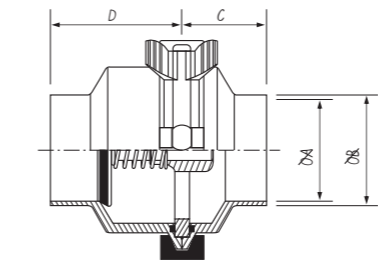
ISO 快装止回阀



ISO Quick Installment Check Valve

Size	A	B	C	D	E
1.0"	22.4	50.5	90	59.7	43.7
1.5"	35.1	50.5	90	61.7	44.7
2.0"	47.8	64	106	70.7	47.7
2.5"	59.5	77.5	123	70.7	47.7
3.0"	72.2	91	136	73.7	47.7
3.5"	84.9	106	150	74.7	47.7
4.0"	97.8	119	165	74.7	48.7

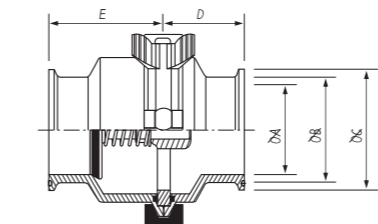
3A 焊接止回阀



3A Welded Check Valve

Size	A	B	D	E
1.0"	22.1	25.4	47	31
1.5"	34.8	38.1	49	32
2.0"	47.5	50.8	58	35
2.5"	60.2	63.5	58	35
3.0"	72.9	76.2	62	36
4.0"	97.4	101.6	65	36

3A 快装止回阀



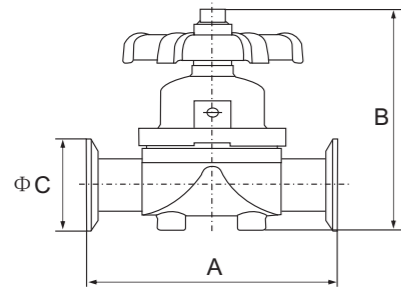
3A Quick Installment Check Valve

Size	A	B	D	E
1.0"	22.1	50.5	43.7	59.7
1.5"	34.8	50.5	44.7	61.7
2.0"	47.5	64	47.7	70.7
2.5"	60.2	77.5	47.7	70.7
3.0"	72.9	91	48.7	74.7
4.0"	97.4	101.6	48.7	77.7

SANITARY DIAPHRAGM VALVE/SAMPLE VALVE

材质：304/316L卫生级阀门

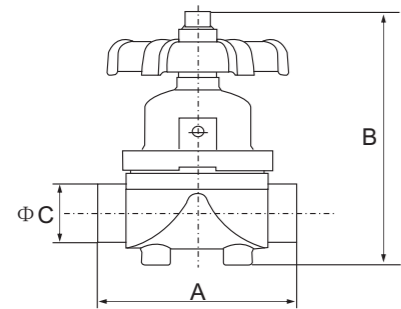
快装手动隔膜阀



Quick-Install Diaphragm Valve

规格	尺寸 Size (mm)		公称直径 Diameter	
	A	B	Inch	DIN
φ 25	129	142	50.5	
φ 32	148	175	50.5	
φ 38	162	178	50.5	
φ 51	190	224	64	
φ 63	225	260	77	

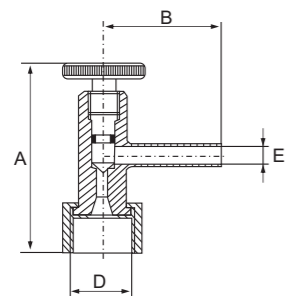
对焊手动隔膜阀



Buttweld Manual Diaphragm Valve

规格	A	B	C
φ 25	120	142	25.4 × 1.5
φ 32	140	175	32 × 1.5
φ 38	155	178	38.1 × 1.5
φ 51	185	224	50.8 × 1.5
φ 63	220	260	63.5 × 1.5

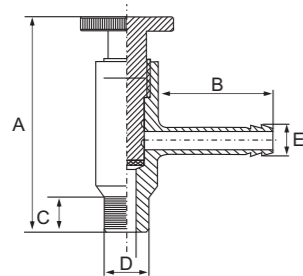
内螺纹取样阀



Internal Thread Sample Valve

规格	尺寸 Size (mm)			公称直径 Diameter	
	A	B	C	Inch	DIN
DN5	81	50	5	3/4"	
DN8	81	50	8	3/4"	
DN10	81	50	10	3/4"	
DN20	81	50	20	1"	

外螺纹取样阀



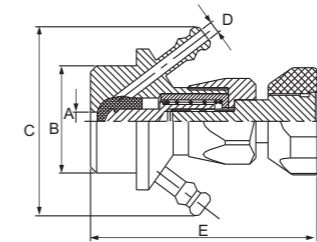
External Thread Sample Valve

规格	A	B	C	E	D
DN5	81	50	25	5	3/4"
DN8	81	50	25	8	3/4"
DN10	81	50	25	10	3/4"
DN20	81	50	25	20	1"

SANITARY SAMPLE VALVE/CLEANING BALL

材质：304/316L 卫生级阀门

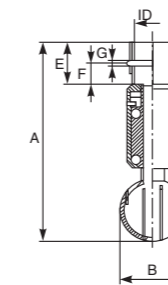
卫生级快装取样阀



Sanitary Grade Aspesis Sample Valve

规格	A	B	C	D	E
DN15	6	75	57	4	75
DN25	8	92	74	8	98

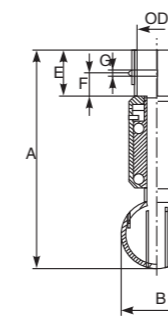
旋转清洗球 φ 45



Rotary Cleaning Ball φ 45

Size	A	B	E	F	G	ID
360°	140	45	30	15	4.5	25.6
360°X	140	45	30	15	4.5	25.6
300°上(upward)	140	45	30	15	4.5	25.6
300°X上(upward)	140	45	30	15	4.5	25.6
180°下(downward)	140	45	30	15	4.5	25.6

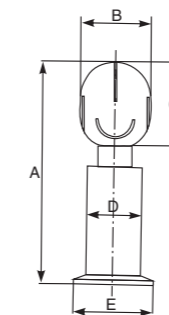
旋转清洗球 φ 65



Rotary Cleaning Ball φ 65

Size	A	B	E	F	G	ID
360°	178	65	40	20	4.5	38.4
360°X	178	65	40	20	4.5	38.4
300°上(upward)	178	65	40	20	4.5	38.4
300°X上(upward)	178	65	40	20	4.5	38.4
180°下(downward)	178	65	40	20	4.5	38.4

DIN德标清洗球

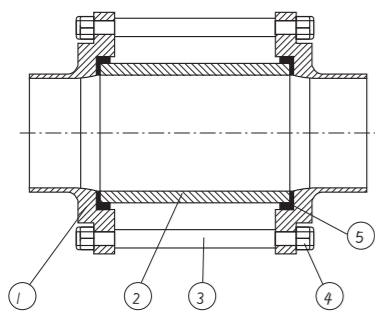


DIN Cleaning Ball

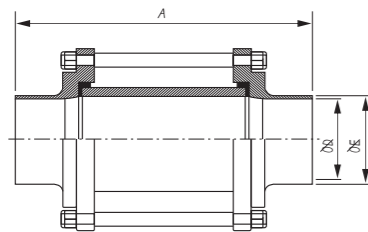
Szie	A	B	C	D	E
DN20	140	45	55	34	50.8
DN25	140	45	55	34	50.8
DN32	140	45	55	34	50.8
DN40	160	65	80	40	64
Dn50	160	65	80	40	64

SIGHT GLASS

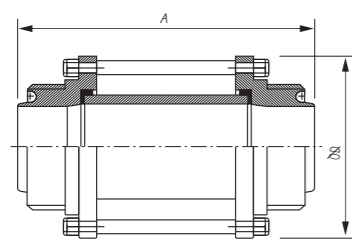
视镜



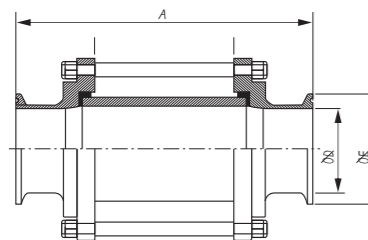
长对焊视镜



RJT, SMS, DIN, IDF 螺纹终端视镜



快装视镜



VOLANT Range of Hygienic Sight Glass:
Clean, High Press Glass. Max Work 10 bar.
Can be changeable
Body: SS304, 316L Precision Machined
forged Body. With width Connection End.
3A、DIN、SMS、RJT、IDF Male/male.
Weld and Femal End.
Screw Blot: Full Stainless Steel.
Seal: EPDM, Silicon and Viton.

Composition

Content %	SiO2	Al2O3	Fe2O3
	80.9	2.3	0.03
	B2O3	Na2O	K2O
	12.7	4.0	0.04

Long Butt Welded Sight Glass

规格	A	D	E
1.0 "	148	22.1	25.4
DN25	148	25	28
Dn32	156	31	34
1.5 "	156	34.9	38.1
DN40	160	37	40
2.0 "	160	47.5	50.8
DN50	160	49	52
2.5 "	160	60.2	63.5
DN65	162	66	70
3.0 "	162	72.2	76.2
DN80	162	81	86
4.0 "	168	97.6	101.6
DN104	168	100	104

RJT, SMS, DIN, IDF Threaded End Sight Glass

规格	A	D
1.0 "	148	22.4
1.5 "	156	35.1
2.0 "	160	47.8
2.5 "	160	59.5
3.0 "	162	72.2
4.0 "	168	97.6

RJT, SMS, DIN, IDF Threaded End Sight Glass

规格	A	D	E
1.0 "	143	22.4	50.5
1.5 "	151	35.1	50.5
2.0 "	155	47.8	64.0
2.5 "	155	59.5	77.5
3.0 "	157	72.2	91.0
4.0 "	163	97.6	119.0

Concentric Reduver

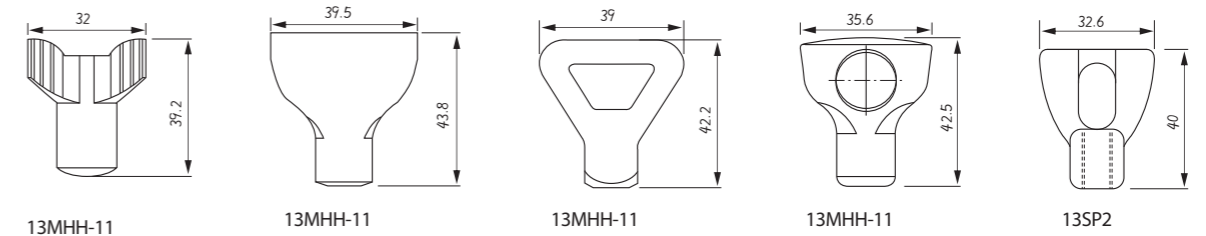
NO.	Name
1	阀体 Body
2	高压光洁玻璃 High Press Clean Glass
3	螺栓 Screw Blot
4	锥紧螺栓 Nylon Lock Nut
5	密封垫 Seal

Physical Properties Description	Valve
1 Specific heat(25°C)	0.17cal/g.°C
Average(25-400°C)	0.233cal/g.°C
Thermal conductivity (25°C) (100°C)	0.0026cal/cm.sec°C 0.0030cal/cm.sec°C
Linear coefficient of expansion(0-300Φ)	32.5 x 10-7/°C
Density	2.23g/cm3

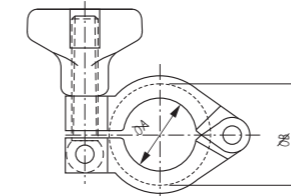
FERRULE(mm)

卡箍

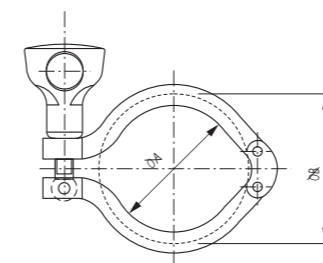
用于锁紧圈的翼形螺母 Wing-Nut For Clamp-Ring



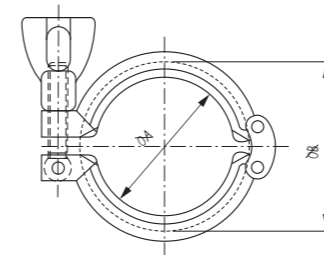
Size:1/2"-3/4" (13MHHM & 13MHH & 13SF)



13MHHM 双插销口



13SF 双插销口



13MHH 单插销口

13MHHM Heavy Duty Double Pin Clamp

Size	A	B
1/2"-3/4"	20	28
1.5"	43.6	53.6
2.0"	57	67
2.5"	70.6	80.6
3.0"	84	94
4.0"	112	122
6.0"	155	170
8.0"	205	220.8

13SF Heavy Duty Double Pin Clamp

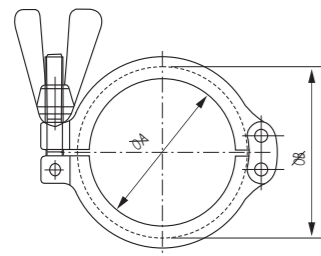
Size	A	B
1/2"-3/4"	20	28
A37	27.5	42.9
1.5"	45	58.6
2.0"	59	72
2.5"	67	84
3.0"	85	98
4.0"	114	127

13MHH Heavy Duty Single Pin Clamp

Size	A	B
A37	27.8	37
1-1/2"	44.4	53.6
2.0"	57.8	67
2 1/2"	71.4	80.6
3.0"	84	94.2
3 1/2"	99	109.2
4.0"	110	122.2
4 1/2"	123	13.2
6.0"	155.4	170.4
8.0"	205	220

FERRULE(mm) 卡箍

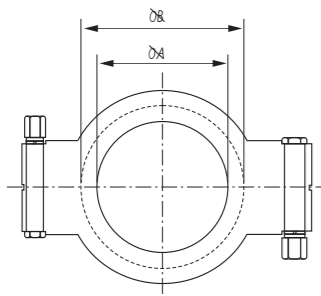
13CS 双插销口



13CS Double Pin Clamp

Size	A	B	Size	A	B
3/4"	20.58	28.34	4.0"	109.54	122.04
DN10-20	27.2	37	DN100	112	123
1.5"	41.02	53.52	DN115	123	134
DN25-40	44.5	54.5	DN125	144	159
2.0"	54.54	67.04	6.0"	157.6	175.1
DN50	57	68	DN150	172	187
2.5"	68.02	80.52	8.0"	207.4	225.9
3.0"	81.52	94.02	DN200	222.5	237.5
DN65	84	95	DN250	257	272
DN80	99	110	DN300	308	323

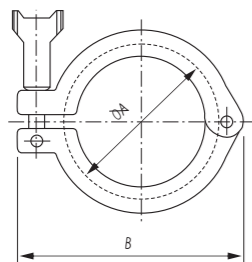
13MHP 带有螺栓黄铜螺母的高压卡箍



13MHP High Pressure Clamp With Screw Bolt Brass Nut

Size	A	B
1.5"	43.32	52.0
2.0"	56.44	65.5
2.5"	69.54	79.0
3.0"	77.56	92.5
4.0"	108.86	120.5
6.0"	158	170
8.0"	222.5	237.5
10"	258.2	272.8
12"	309	327.6

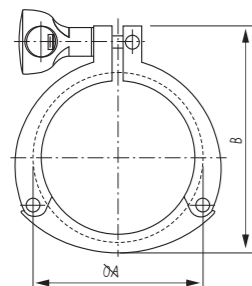
13IS L-管卡箍



13IS L-Line Clamp

Size	A	B
1-1/2"	53.4	83.8
2.0"	72.2	111
2-1/2"	88.1	121.4
3.0"	102.4	136.1
4.0"	127.8	162
6.0"	195.3	242.1

3 节卡箍

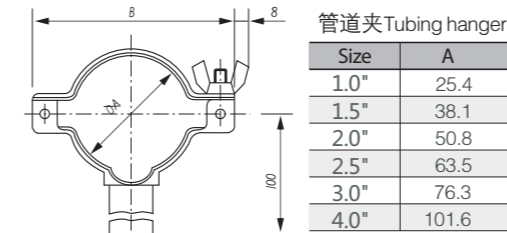


3 Pieces Clamp

Size	A	B
1-1/2"	54	80
2.0"	67.5	94
2-1/2"	80.9	109
3.0"	84.4	126
4.0"	122.4	154

TUBING HANGER(mm) 管道夹

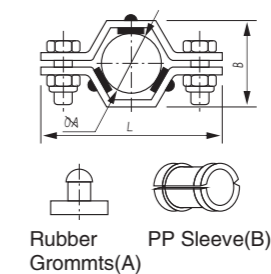
TH-1



管道夹 Tubing hanger

Size	A	B
1.0"	25.4	66
1.5"	38.1	79
2.0"	50.8	90
2.5"	63.5	105
3.0"	76.3	120
4.0"	101.6	146

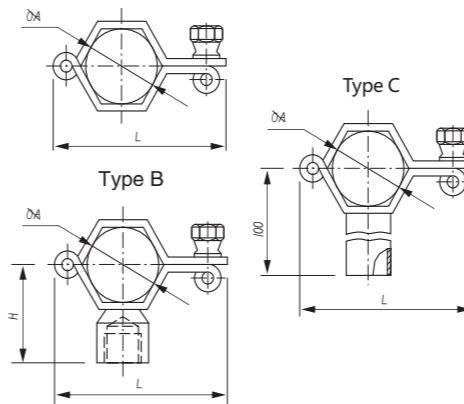
TH-4



管夹 Pipe hangers

DN	A	B	L
1.0"	25.4	42.4	86.6
1.5"	38.1	55.1	79
2.0"	50.8	67.8	92
2.5"	63.5	80.5	127.6
3.0"	76.2	93.2	142
4.0"	104.0	122	175
6.0"	152.4	174	235

3A / SMS / DIN六角管道夹
TH-3



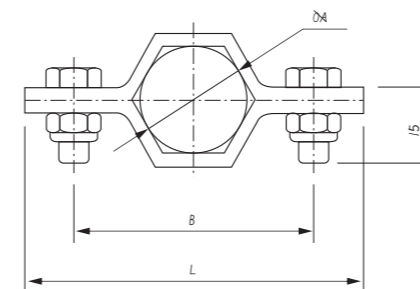
3A / SMS / DIN HEX Tubing Hangers

Size	A	L	H
SMS25	25	61	45
DIN34	28	64	46.5
DIN38	34	64	49.5
SMS38	38	76	51.5
DIN40	40	78	52.5
SMS51	51	90	58
DIN52	52	90	58.5

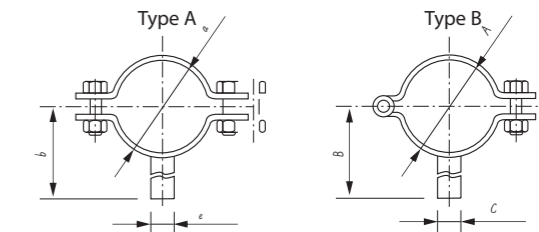
3A / SMS / DIN HEX Tubing Hangers

Size	A	L	H
SMS63.5	63.5	106	64
DIN70	70	111	67.5
SMS76	76	120	70.5
DIN85	85	125	75
DIN101.6	101.6	146	83
SMS104	104	152	84.5

DIN管道夹
TH-2



TH-5



DIN Hanger

Size	A	D	E
DN10	67.5	12/13	6
DN15	70.5	18/19	8
DN20	72.5	22/23	8
DN25	75.5	28/29	8
DN32	78.5/79.5	34/35	10
DN40	81.5/82.5	40/41	10
DN50	88/89	52/53	12

DIN Hanger

Size	A	D	E
DN65	98	70	12
DN80	105.5	85	15
DN100	116	104	15
DN125	127	129	18
DN150	140	154	18
DN200	204		
DN250	254		

ISO-六角管道夹 ISO-HEX tubing hanger

Size	A	B	L
ISO21.3	12.3	48	68
ISO26.9	26.9	55	74
ISO33.7	33.7	63	82
ISO42.4	42.4	74	93
ISO48.3	48.3	82	101
ISO60.3	60.3	95	114
ISO88.9	88.9	130	149
ISO114.3	114.3	158	177

英寸管道夹 INCH hanger

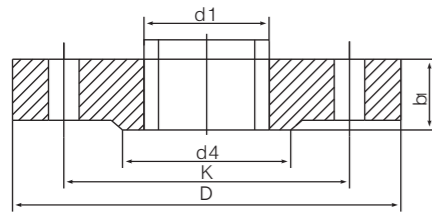
Size	A	B	C
1"	25.5	84	10
1 1/4"	31.75	87	10
1 1/2"	38.1	90	10
2"	50.8	76	10
2 1/2"	63.5	85	10
3"	76.1	92.5	10
4"	101.6	102	10
5"	129	114.5	12
6"	154	127	12
8"	204	152	12

DIN管道夹 DIN hanger

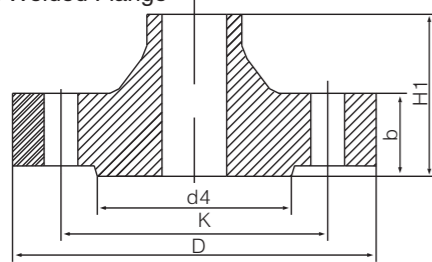
Size	A	B	C
NW20	22	61	10
NW25	28	64	10
NW32	34	67	10
NW40	40	70	10
NW50	52	76	10
NW65	70	85	10
NW80	85	92.5	10
NW100	104	102	10
NW125	129	114.5	12
NW150	154	127	12
NW200	204	152	12

IDF FLANGE(mm) 美标法兰

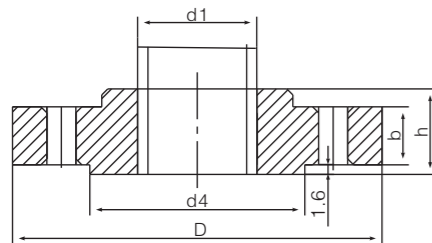
螺纹法兰
Screwed Flange



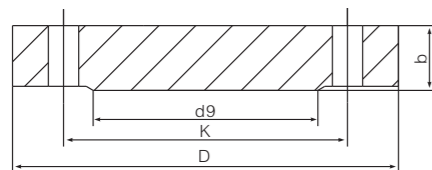
对焊法兰
Butt Welded Flange



承插焊法兰
Socket Welding Flange



盲法兰
Blind Flange

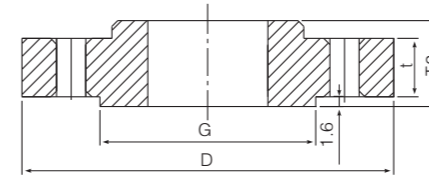


IDF Welding Male IDF-15

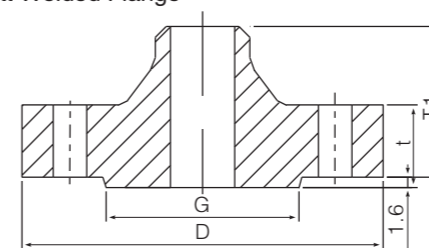
Nominal Bore	D1(Φ)	D(Φ)	b	b1	h	h1	D4(Φ)	K(Φ)	d9
10	17.2	90	16	14	20	35	40	60	-
15	21.3	95	16	14	20	35	45	65	-
20	26.9	105	18	16	24	38	58	75	-
25	33.7	115	18	16	24	38	68	85	-
32	42.4	140	18	16	26	40	78	100	-
40	48.3	150	18	16	26	42	88	110	-
50	60.3	165	20	18	28	45	102	125	-
65	76.1	185	18	18	32	45	122	145	55
80	88.9	200	20	20	34	50	138	160	70
100	114.3	220	20	20	40	52	158	180	90
125	139.7	250	22	22	44	55	188	210	115
150	168.3	285	22	22	44	55	212	240	140
175	193.7	315	24	24	-	60	242	270	165
200	219.1	340	24	24	44	62	268	295	190
250	273	405	26	26	46	70	320	355	237
300	323.9	460	28	28	46	78	378	410	285
350	355.6	520	30	32	-	82	438	470	332
400	406.4	580	32	36	-	85	490	525	380
450	457.2	640	34	40	-	87	550	585	428
500	508	715	36	44	-	90	610	650	475
600	609.6	840	40	52	-	95	725	770	-

IDF FLANGE(mm) 美标法兰

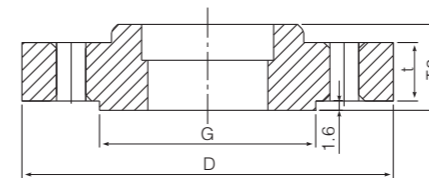
螺纹法兰
Screwed Flange



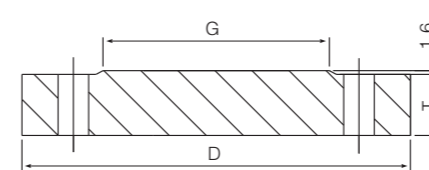
对焊法兰
Butt Welded Flange



承插焊法兰
Socket Welding Flange



盲法兰
Blind Flange



美标法兰 150LBS/300LBS

SIZE	D(Φ)	G(Φ)	t	T1	T2	Approximate Weight(kg)			
						Wel- ding and Neck	Slip-on and Threaded	Blind	Soc- ket Welding
1/2 "	89	35.1	11.2	47.8	15.7	0.52	0.47	0.47	0.47
3/4 "	99	42.9	12.7	52.3	15.7	0.92	0.75	0.63	0.76
1 "	108	50.8	14.2	55.6	17.5	1.10	0.86	0.95	0.87
1 1/4 "	117	63.5	15.7	57.2	20.6	1.40	1.40	1.40	1.43
1 1/2 "	127	73.2	17.5	62.0	22.4	1.81	1.41	1.62	1.45
2 "	152	91.9	19.1	63.5	25.4	2.8	2.26	2.64	2.33
2 1/2 "	178	104.6	22.4	69.9	28.4	4.28	3.43	4.06	3.55
3 "	191	127.0	23.9	69.9	30.2	5.18	4.00	5.00	4.15
3 1/2 "	216	139.7	23.9	71.4	31.8	5.50	5.00	5.90	5.00
4 "	229	157.2	23.9	76.2	33.3	7.32	5.75	7.50	5.99
5 "	254	185.7	23.9	88.9	36.6	8.91	6.51	9.00	6.96
6 "	279	215.9	25.4	88.9	39.6	11.26	7.81	12.00	8.41
8 "	343	269.7	28.4	101.6	44.5	18.0	13.00	20.00	13.93
10 "	406	323.9	30.2	101.6	49.3	25.0	17.10	30.00	19.50
12 "	483	381	31.8	114.3	55.6	38.98	27.68	44.00	29.03
14 "	533	412.8	35.1	127	57.2	51.71	35.20	64.0	38.56
16 "	597	469.9	36.6	127	63.5	64.41	45.00	78.0	47.37
18 "	635	533.4	39.6	139.7	68.3	74.84	54.00	95.0	58.72
20 "	699	584.2	42.9	144.5	73.2	89.36	73.00	125.0	77.81
24 "	813	692.2	47.8	152.4	82.6	119.66	96.00	190.0	100.75

Spirit moves bottom passes into anticipate valve DIN11850卫生管 (外径x壁厚) 对照表

以 (DN) 通称主称呼的德国DIN11850标准管道, 根据适用条件和场合的不同分为三个系列 (外径x壁厚) 的尺寸标准, 如下所示:
DIN 11850 standard pipe.Called as normal diameter (DN) in Germany can be divided into the size standard (of thickness of wall) of three series and expressed as follows:

	公称通径 DN	10	15	20	25	32	40	50	65	80	100	125	150	
第一系列 Serie 1	管子外径 OD of pipe	12	18	22	28	34	40	52	70	85	104	129	154	
	外径公差 Tolerance of DO	±0.12		±0.5		±0.2		±0.3		±0.4				
	壁厚 Thickness of wall	1					2							
	壁厚公差 Tolerance of thickness of wall	±10%						±10%						
	重量kg/m (7.9kg/dm ³)	0.27	0.42	0.51	0.66	0.82	0.97	1.26	3.43	4.16	5.03	6.36	7.49	
	第二系列 Serie 2	管子外径 OD of pipe	13	19	23	29	35	41	53	Rohr mit groberen Wanddicken als nach Reihe 1 sind für diesen Nennweitenbereich aus bestehenden Rohrnormen auszuwählen				
外径公差 Tolerance of DO		±0.3			±1%									
壁厚 Thickness of wall		1.5												
壁厚公差 Tolerance of thickness of wall		±10%												
重量kg/m (7.9kg/dm ³)		0.43	0.66	0.81	1.03	1.26	1.5	1.9						
第三系列 Serie 3	管子外径 OD of pipe	14	20	24	30	36	42	54	Rohrnormen auszuwählen					
	外径公差 Tolerance of DO	±0.3			±1%									
	壁厚 Thickness of wall	2												
	壁厚公差 Tolerance of thickness of wall	±10%												
	重量kg/m (7.9kg/dm ³)	0.06	0.90	1.10	1.40	1.70	2.00	2.66						

Die zulässigen Abweichungen sind aus dem Umfang. Die zulässige Ovalität beträgt ±1% auf dem Rohraußendurchmesser.

ISO卫生管 (外径x壁厚) 对照表

ISO标准管道尺寸如下: (引用: ISO 2037:1992(E)标准)

(Citation: standard of ISO 2037:1992(E))

单位 (mm)

ISO2037:1992(E)卫生管 (外径x壁厚) 对照表							
外径尺寸 Tube outside diameter	12.7	25	38	51	63.5	76.1	101.6
厚度 Thickness	1	1;1.6	1.2;1.6	1.2;1.6	1.6	1.6	2

Chemical composition of general stainless steel 常用不锈钢成份 (对照表)

常用不锈钢成份 (对照表)									
钢号 Steel Type	化学成份 (%) (Chemical Composition)								
	C 碳	Si 硅	Mn 锰	P 磷	Ni 镍	S 硫	Cr 铬	No 钼	N
中国不锈钢材料 China stainless steel	1Cr18Ni9	≤0.15	≤1.00	≤2.00	≤0.35	≤0.03	8.00~10.00	8.00~10.00	
	0Cr18Ni9	≤0.07	≤1.00	≤2.00	≤0.35	≤0.03	8.00~11.00	8.00~11.00	
	00Cr19Ni10	≤0.03	≤1.00	≤2.00	≤0.35	≤0.03	8.00~12.00	8.00~12.00	
	0Cr17Ni12Mo2	≤0.08	≤1.00	≤2.00	≤0.35	≤0.03	10.00~14.00	10.00~14.00	2.00~3.00
	00Cr17Ni14Mo2	≤0.03	≤1.00	≤2.00	≤0.35	≤0.03	12.00~15.00	12.00~15.00	2.00~3.00
	0Cr18Ni9Ti	≤0.08	≤1.00	≤2.00	≤0.35	≤0.03	9.00~12.00	9.00~12.00	
	美国不锈钢材料 USA stainless steel	ASTM S30200 302	≤0.15	≤0.75	≤2.00	≤0.45	≤0.03	8.00~10.00	17.00~19.00
ASTM S30400 304		≤0.08	≤0.75	≤2.00	≤0.45	≤0.03	8.00~20.20	18.00~20.00	
ASTM S30403 304L		≤0.03	≤0.75	≤2.00	≤0.45	≤0.03	8.50~10.50	18.00~20.00	
ASTM S31600 316		≤0.08	≤0.75	≤2.00	≤0.45	≤0.03	10.00~14.00	16.00~18.00	2.00~3.00
ASTM S31603 316L		≤0.03	≤0.75	≤2.00	≤0.45	≤0.03	10.00~14.00	16.00~18.00	2.00~3.00
ASTM S32100 321		≤0.08	≤0.75	≤2.00	≤0.45	≤0.03	9.00~13.00	17.00~19.00	
德国不锈钢材料 DIN stainless steel	X5CrNi1810 304	≤0.07	≤1.00	≤2.00	≤0.45	≤0.03	8.50~10.50	17.00~19.00	
	X2CrNi1911 304L	≤0.03	≤1.00	≤2.00	≤0.45	≤0.03	10.00~12.50	18.00~20.00	
	X5CrNiMo17132 316	≤0.07	≤1.00	≤2.00	≤0.45	≤0.03	10.50~13.50	16.50~18.50	2.00~2.50
	X2CrNiMo17132 316L	≤0.03	≤1.00	≤2.00	≤0.45	≤0.03	11.00~14.00	16.50~18.50	2.00~2.50
	X6CrNiMo1810 321	≤0.08	≤1.00	≤2.00	≤0.45	≤0.03	9.00~12.00	17.00~19.00	

美国材料试验协会规格 ASTM (American Society for Testing and Material)

美国钢铁协会规格 AISI (American Iron and Steel Institute)

英国国家规格 BS (British Standards)

德国国家规格 DIN (Deutsche Industrie Normen)

国际标准化组织规格 ISO (International Organization for Standardization)

法国国家规格 NF (Normes Francaises)

日本工业规格 JIS (Japanese Industrial Standards)